

QUEENSLAND RECONSTRUCTION AUTHORITY

Monthly Report

April 2015

Document details:

Security classification	Public
Date of review of security classification	April 2015
Authority	Queensland Reconstruction Authority
Author	Chief Executive Officer
Document status	Final
Version	1.1

Contact for Enquiries:

All enquiries regarding this document should be directed to:

Queensland Reconstruction Authority

*Phone the call centre - **1800 110 841***

Mailing Address

Queensland Reconstruction Authority

PO Box 15428

City East Q 4002

Alternatively, contact the Queensland Reconstruction Authority by emailing info@qldra.org.au

Licence

This material is licensed under a [Creative Commons - Attribution 3.0 Australia licence](#).



The Queensland Reconstruction Authority requests attribution in the following manner:

© The State of Queensland (Queensland Reconstruction Authority) 2011-2014

Information security

This document has been classified using the [Queensland Government Information Security Classification Framework \(QGISC\)](#) as PUBLIC and will be managed according to the requirements of the QGISC.

Message from the Chief Executive Officer

Major General Richard Wilson AO (Ret'd)
Chairman
Queensland Reconstruction Authority

Dear Major General Wilson

It is with pleasure that I present the April 2015 Monthly Report – the 50th report to the Board of the Queensland Reconstruction Authority (the Authority).

The Authority was established under the *Queensland Reconstruction Authority Act 2011* (the Act) following the unprecedented natural disasters which struck Queensland over the summer months of 2010-11. The role of the Authority has since been extended to cover historical and continuing disaster events in Queensland. The Authority is charged with managing and coordinating the Government's program of infrastructure renewal and recovery within disaster-affected communities, with a focus on working with our State and local government partners to deliver best practice expenditure of public reconstruction funds.

Since our last report, legislation has been introduced to Parliament to extend the Authority beyond 30 June 2015 to enable the Authority to continue the work of helping communities effectively and efficiently recover from the impacts of natural disasters that have devastated Queensland over recent times.

Also since our last report, the Authority has completed and submitted Queensland's audited claim for NDRRA financial assistance to the Commonwealth in relation to the 2013-14 financial year. The claim acquitted more than \$5.7 billion of eligible expenditure and was the largest in Australia's history. The claim was finalised following the close out and audit of the massive volume of works completed prior to 30 June 2014 on the 2011, 2012, 2013 and 2014 events.

With the next milestone nearing for completion of eligible works for the 2013 events, the Authority is focused on delivery of the remaining program of works from Tropical Cyclone Oswald and other events of 2013 by 30 June 2015 and the progression of the 2014 and 2015 events through the damage assessment, submission preparation and approval and delivery phases.

The April report is also provided following completion of the Authority's February 2015 review of damage estimates. The review is undertaken on a regular basis and involved a complete review of the program of each local government authority (LGA) and State agency for works arising from disaster events managed by the Authority. The review included preliminary estimates for the 2015 events as well as updated estimates for the 2013 and 2014 events which are currently in the delivery phase. Following lodgement of the 2013-14 Claim, the review also reflects the final eligible costs for the majority of the 2011 and 2012 event works which were completed by 30 June 2014. Following completion of the February 2015 review, the Authority's total program of works has been revised to \$13.57 billion.

As at 30 March 2015:

- an additional \$13 million in submissions have been received by the Authority since last month
- an additional \$36 million has been processed by the Authority since last month
- a cumulative value of \$12.36 billion of the revised \$13.57 billion works program (2009 to 2015) has been reported to the Authority as being in progress or delivered by delivery agents as at 28 February 2015.

Since the last report, the State has also adopted the Severe Tropical Cyclone Marcia Recovery Plan (the Recovery Plan) to guide the activities which will help ensure that impacted communities recover as quickly as possible from this most recent disaster. The April report provides an overview of the Recovery Plan and future reports will report on the progress of recovery against key tasks.

I commend the report to you and recommend its release to the Minister and the public pursuant to Section 41 of the *Queensland Reconstruction Authority Act 2011*.

Yours sincerely



Frankie Carroll
Chief Executive Officer
Queensland Reconstruction Authority

Contents

1.0 Introduction	1
1.1 Background	2
1.2 Purpose	2
1.3 Timing	2
2.0 Disaster Assistance	3
2.1 Queensland Disaster Assistance Framework	4
2.2 Events and relief measures managed by the Authority	5
2.3 Additional assistance measures	7
2.3.1 Betterment fund	7
2.3.2 Other assistance measures	7
3.0 Program Status	8
3.1 Recent developments	9
3.2 Combined program status	9
3.3 Program of works expenditure	9
3.4 State-wide pipeline of works	10
3.5 State-controlled roads and highways	11
3.6 Betterment fund status	12
4.0 Progress Reports	13
4.1 Severe Tropical Cyclone Marcia Recovery Plan	14
4.2 Iconic projects in reconstructing Queensland	15
4.3 Program spotlights	17
5.0 Communications	19
5.1 Communicating progress	20
5.2 Media reports	21
<u>Appendices</u>	
Appendix A: Local Government Areas by Region	23

Section one:
Introduction



1.0 Introduction

1.1 Background

Queensland has been struck by a series of unprecedented natural disasters in recent years. Between November 2010 and April 2011, extensive flooding caused by periods of extremely heavy rainfall and destruction caused by a number of storm cells including Cyclones Tasha, Anthony and Severe Tropical Cyclone Yasi and subsequent monsoonal flooding, resulted in all of Queensland being declared as disaster affected. Since 2011, the State has also repeatedly faced additional large scale natural disasters including a series of events through 2012, Tropical Cyclone Oswald in late January 2013, Tropical Cyclone Ita and other events in 2014 and most recently Tropical Cyclone Marcia in 2015.

The Queensland Reconstruction Authority (the Authority) was established on 21 February 2011 under the *Queensland Reconstruction Act 2011* (the Act) to manage and coordinate the recovery effort for the disaster events of the summer of 2010-11. The Authority also administers the rebuilding program for Natural Disaster Relief and Recovery Arrangements (NDRRA) activated disaster events and works closely with local governments to ensure the effective recovery of Queensland communities.

The Act as passed included a sunset clause to wrap up the Authority after two years, recognising that the focus of the Authority was to fast-track rebuilding efforts and get Queensland back on to a business-as-usual footing as quickly as possible. The Act was extended in 2012 and again in 2013 until 30 June 2015 to ensure the Authority could continue the critical work of helping communities effectively and efficiently recover from the impacts of natural disasters that continued to devastate Queensland.

In March 2015, legislation was introduced as part of the *Local Government and Other Legislation Amendment Bill 2015* to repeal the sunset clause of 30 June 2015 and enable the Authority to continue the work of helping communities effectively and efficiently recover from the impacts of natural disasters that have devastated Queensland over recent times.

1.2 Purpose

The Authority's mission is **to reconnect, rebuild and improve Queensland communities and its economy.**

The Authority is charged with managing and coordinating the Government's program of infrastructure renewal and recovery within disaster-affected communities, with a focus on working with our State and local government partners to deliver best practice expenditure of public reconstruction funds.

The Authority operates with reference to recovery and reconstruction plans established by the State in response to the 2011 disaster events, Tropical Cyclone Oswald in 2013, Severe Tropical Cyclone Ita in 2014 and most recently Severe Tropical Cyclone Marcia in 2015. An overview of the Tropical Cyclone Marcia Recovery Plan is provided in Section 4.1.

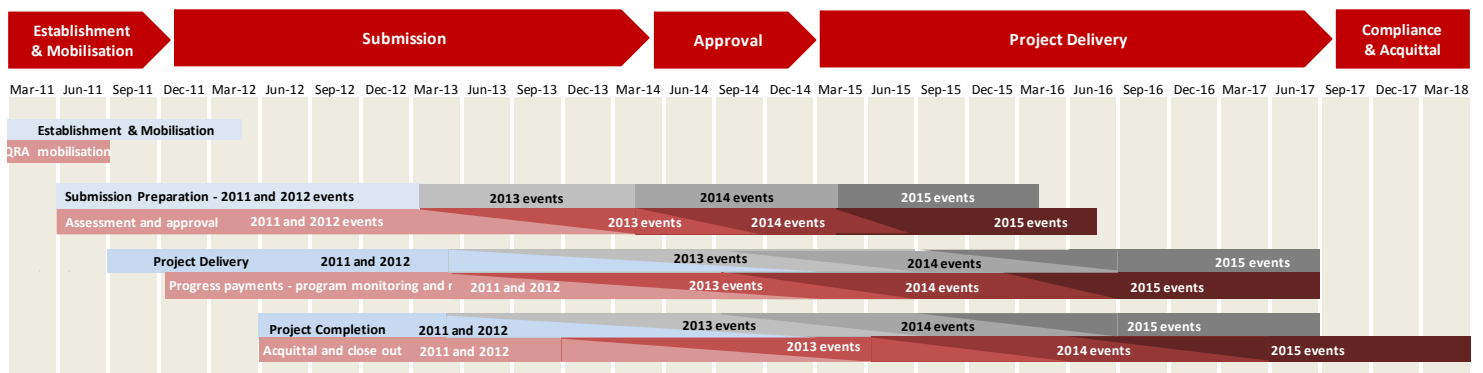
1.3 Timing

On 31 March 2015, the Authority submitted the audited 2013-14 claim for NDRRA financial assistance to the Commonwealth. The claim acquitted more than \$5.7 billion of eligible expenditure and was finalised following the close out and audit of the massive volume of works completed prior to 30 June 2014 on the 2011, 2012, 2013 and 2014 events.

With the next milestone nearing for completion of eligible works for the 2013 events, the Authority is focused on delivery of the remaining program of works from Tropical Cyclone Oswald and other events of 2013 by 30 June 2015 and the progression of the 2014 and 2015 events through the damage assessment, submission preparation and approval and delivery phases.

Following Tropical Cyclone Marcia and other 2015 disaster events that have recently occurred, the Authority is supporting the State's response to the events and is also liaising with relevant delivery agents to assist with damage assessments and progress towards recovery and reconstruction.

With the 2015 disaster season still underway, the Authority remains prepared to respond should additional disasters strike.



Section two:
Disaster Assistance

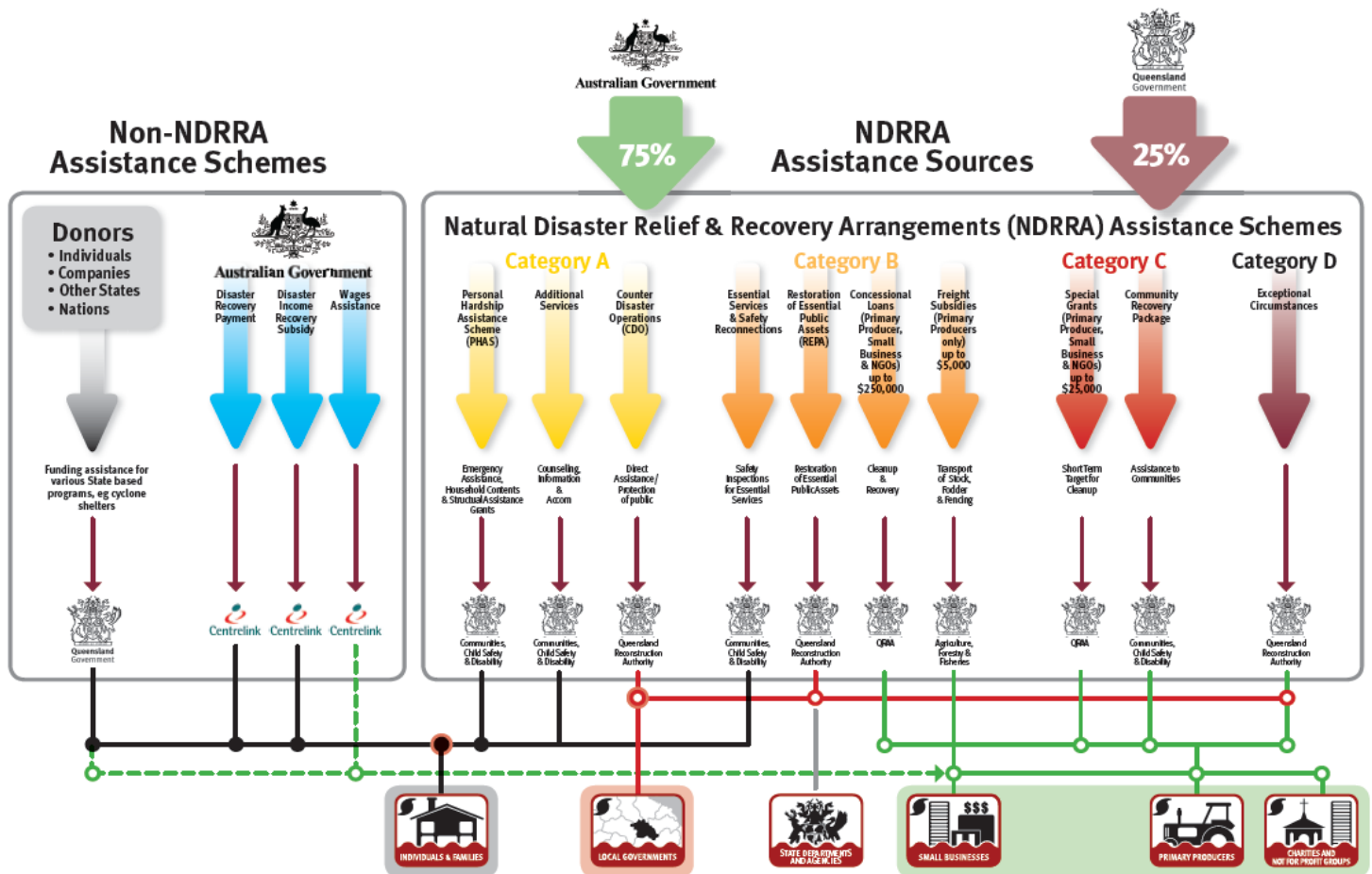


2.0 Disaster Assistance

2.1 Queensland Disaster Assistance Framework

The available Queensland Disaster Assistance schemes are separated between NDRRA (jointly funded by the Commonwealth and State governments) and Non-NDRRA funding schemes. The diagram below indicates the different elements of assistance available and how each element operates.

Figure 2.1.1 Queensland Disaster Assistance Framework



Whilst elements of the assistance schemes are delivered by other State agencies, all of the NDRRA assistance sources (and elements of the non-NDRRA assistance schemes) are administered by the Authority for historical and continuing disaster events in Queensland.

Disaster events managed by the Authority

The list of the activated disaster events managed by the Authority are set out in **Section 2.3** and can also be found on www.disaster.qld.gov.au.

The maps opposite show the LGAs activated for relief measures under NDRRA for each event period under the Queensland Disaster Assistance Framework.

This report includes references to event periods described as follows:

- **2015 events:** Activated disaster events managed by the Authority which occurred in the financial year ended **30 June 2015**
- **2014 events:** Activated disaster events managed by the Authority which occurred in the financial year ended **30 June 2014**
- **2013 events:** Activated disaster events managed by the Authority which occurred in the financial year ended **30 June 2013**, including Tropical Cyclone Oswald and associated rainfall and flooding (January 2013)
- **2012 events:** Activated disaster events managed by the Authority which occurred in the financial year ended **30 June 2012**
- **2011 events:** Activated disaster events managed by the Authority which occurred in the financial year ended **30 June 2011**, including Tropical Cyclone Yasi and Queensland flooding (November 2010 to February 2011)
- **2009-2010 events:** Activated disaster events managed by the Authority which occurred prior to 30 June 2010
- **Combined Program:** relates to all the activated disaster event programs managed by the Authority.

2.2 Events and relief measures managed by the Authority

The Authority has responsibility to administer NDRRA relief measures for historical and continuing disaster events in Queensland. The Authority currently manages and coordinates the infrastructure reconstruction and recovery for 34 disaster events activated for NDRRA relief measures since the Authority's establishment in February 2011 and the remaining program of works for an additional 16 disaster events which occurred prior to the Authority's establishment.

The maps opposite show the LGAs activated for relief measures under NDRRA for the 2011 to 2015 event periods managed by the Authority under the Queensland Disaster Assistance Framework.

Since the last report, the Tropical Cyclone Nathan disaster event and additional relief measures for Severe Tropical Cyclone Marcia have been activated.

2015 events:

- Tropical Cyclone Nathan and associated rainfall and flooding, 11 - 15 March 2015
- Severe Tropical Cyclone Marcia and South East Queensland Trough - 19 to 22 February 2015
- North Queensland Severe Weather and Flooding - 8 to 15 February 2015
- Central Eastern Queensland Heavy Rainfall and Flooding - 21 to 29 January 2015
- Western Queensland Heavy Rainfall and Flooding - 5 to 18 January 2015
- Central Queensland Heavy Rainfall and Flooding - 8 to 14 December 2014
- Brisbane Severe Thunderstorm - 27 November 2014.

2014 events:

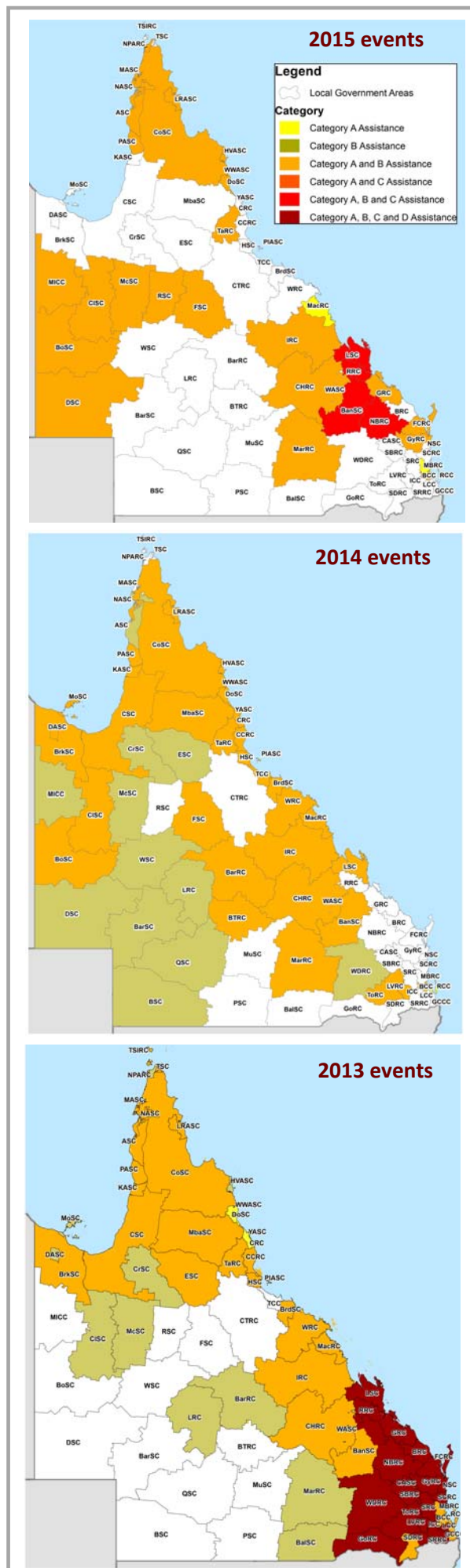
- Tropical Cyclone Ita & Associated Rainfall & Flooding, 11-14 April 2014
- Tropical Cyclone Gillian - 10 to 11 March 2014
- Central Coast & Southern Queensland Trough, 26-30 March 2014
- Central & Western Queensland Flooding & Rainfall, 18-28 February 2014
- North East Queensland Monsoonal Rainfall & Flooding - 7 to 9 February 2014
- Tropical Cyclone Fletcher, commencing 2 February 2014
- Far North Queensland Peninsula Flooding (27-31 January 2014)
- Tropical Cyclone Dylan, 31 January 2014
- North Stradbroke Island Fires, commencing 29 December 2013.

2013 events:

- South West Queensland Wildfires, 21 December 2012
- Far Northern Queensland Bushfires, late October - December 2012
- Tropical Cyclone Oswald and Associated Rainfall & Flooding, 21-29 January 2013 *
- Longreach Flood, 18 February 2013 #
- Central & Southern Queensland Low, 25 February - 5 March 2013. #

* Events covered under the National Partnership Agreement for Natural Disaster Recovery and Reconstruction (NPA) between the State and Commonwealth Government signed 8 February 2013 (NPA Events).

Pending agreement to extend the NPA to include two additional 2013 events - Longreach Floods, 18 February 2013 and Central and Southern Queensland Low, 25 February - 5 March 2013.



2.2 Events managed by the Authority (cont.)

2012 events:

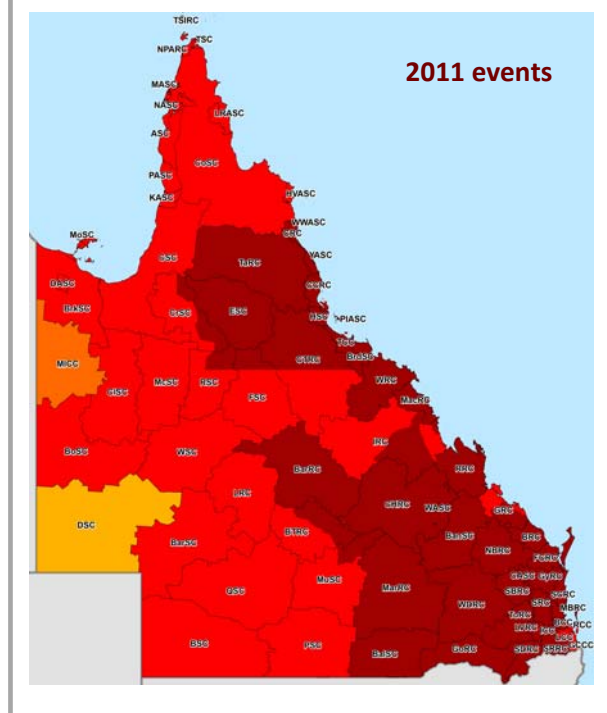
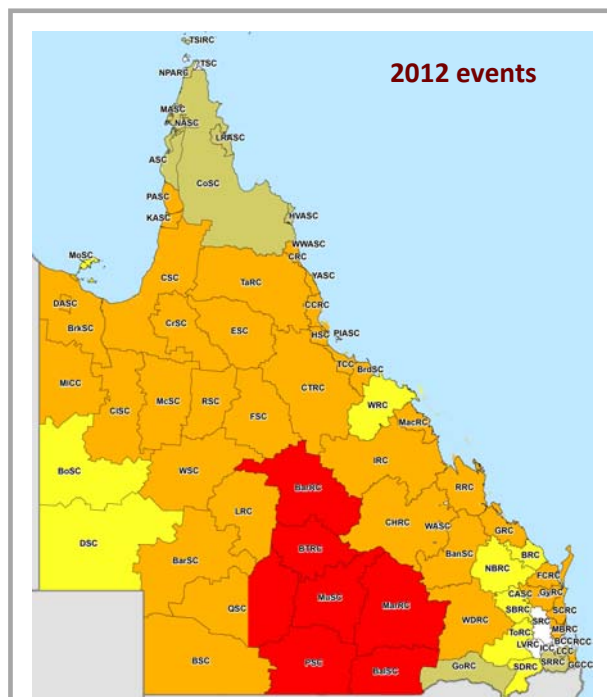
- Queensland Bushfires, August to October 2011
- Localised Heavy Rainfall Northern Queensland, October 2011 *
- Southern Queensland Flooding, November to December 2011*
- South East Queensland Heavy Rainfall and flooding, 23- 26 January 2012 *
- Western Queensland Tropical Low, January - February 2012 *
- Far Northern Queensland Tropical Low, 3-4 February 2012 *
- North Coast Queensland Storms and flooding and East Coast Hybrid Low, 24 February - 7 March 2012 *
- Northern and Far Northern Queensland Heavy Rainfall & flooding, 15 March 2012 *
- East Coast Low, 22 March 2012. *

2011 events:

- South West Flooding, April 2011*
- Queensland Monsoonal Flooding Event, 28 February 2011*
- Severe Tropical Cyclone Yasi on 2 February 2011*
- Queensland Flooding and Tropical Cyclones Tasha and Anthony, November 2010 to February 2011.*

2007-2010 events managed by the Authority:

- Queensland Monsoonal Flooding and Tropical Cyclones Olga, Neville, Ului and Paul, January to April 2010
- Northern, Central and South West Queensland Flooding, 22 December 2009 to 8 January 2010
- South West Flooding, 20 – 25 November 2009
- 2010 South East Queensland Flooding, 9-12 October 2010.
- Queensland Bushfires, September – October 2009
- South West Queensland Low and Associated Flooding, September 2010
- South East Queensland Low, May 2009
- Queensland Monsoonal flooding and Tropical Cyclone Charlotte and Ellie, January - February 2009
- Queensland storms and associated flooding, 16-22 November 2008
- South West Queensland flooding, June 2008
- Queensland Monsoonal flooding, February March 2008
- Queensland Monsoonal flooding, January 2008
- South East Queensland East Coast Low, 27 December 2007 - 7 January 2008
- Central Western Queensland storms and flooding, 22-30 December 2007
- South West Queensland storms and flooding, 23-30 November 2007
- South East and North Coast Queensland East Coast Low, August 2007.



* Events covered under the National Partnership Agreement for Natural Disaster Recovery and Reconstruction (NPA) between the State and Commonwealth Government signed 8 February 2013 (NPA Events).

2.3 Additional assistance measures

The State Government in conjunction with the Commonwealth have activated a range of jointly-funded Category C, Category D and other relief measures to alleviate distress due to the impact of the 2014, 2013 and 2011 events. The measures are summarised below:

2.3.1 Betterment fund

On 8 February 2013, the Queensland Government signed the National Partnership Agreement (NPA) with the Commonwealth Government which recognised the need for a more streamlined process for the approval of Betterment funding. The Queensland Government announced a \$40 million commitment to Betterment funding which will match the Commonwealth Government contribution, resulting in the establishment of the \$80 million Betterment Fund.

In August 2013, the Betterment fund was extended beyond its original coverage of LGAs declared for NDRRA assistance for Tropical Cyclone Oswald to also cover LGAs declared for the two additional disaster events that occurred through to June 2013 (Longreach Flood (18 February 2013) and Central and Southern Queensland Low (25 February to 5 March 2013)). The Betterment fund is available for the restoration or replacement of essential public assets to a more disaster resilient standard than their pre-disaster standard. The intent of betterment is to increase the resilience of communities to natural disasters, while at the same time reducing future expenditure on asset restoration, reducing incidents, injuries and fatalities and improving asset utility during and after disaster events.

Where a damaged asset is approved as a betterment project, the normal cost of restoring or replacing the asset to its pre-disaster standard will continue to be funded under Category B NDRRA and the incremental cost to 'better' the asset to a more disaster-resilient standard will be financed from the Betterment fund. The status of the Betterment fund is set out in Section 3.6 of this report.

2.3.2 Other assistance measures

2014 events

- **\$1.6 million** funding for the additional costs incurred by Cook Shire Council for disaster reconstruction work on the Peninsula Road Network.

2013 events (Tropical Cyclone Oswald)

- **Community Recovery Package (Category C) - \$5 million** - Funding for community development officers in the hardest hit communities of Bundaberg and North Burnett, support for mental health services and a flexible fund that assists communities to implement engagement and development activities.
- **Clean Up and Recovery program - \$10 million** - Program to assist primary producers to clear debris and restore fencing in the worst affected areas; to maintain workers while income generating activities are reduced and to clear debris from watercourse that poses a hazard to downstream infrastructure and activities.
- **Industry Recovery Officers - \$1.5 million** - Placement of Industry Recovery Officers to assist business and primary producers recover from flooding.
- **Enhanced concessional loans and grants** - Loans of up to \$650,000 (with a grant component of up to \$50,000) are available to applicants that have suffered extreme damage such that the existing concessional loan and recovery grants under NDRRA category B and C are insufficient to support recovery.
- **Environmental Recovery program - \$10 million*** - Program to fund existing programs to conduct flood specific clean up and soil conservation work following the 2013 flooding.
- **Rural Financial Counselling Services - \$1.5 million*** - Provision of financial planning advice for rural businesses and primary producers to assist in the recovery of local economies following the disaster.
- **Other measures - \$11.9 million** to fund dredging works to restore Bundaberg Port to its pre-2013 flood clearance depths; and **\$900,000** to assist Bundaberg Regional Council meet the cost of recovery works for community parks and gardens.

2011 events

- **Queensland Local Council Package - \$315 million** - Funding to help local councils repair utilities and infrastructure, and support their efforts in recovering from the floods and Cyclone Yasi. The package comprises two components: \$265 million to fast-track the repair of damaged infrastructure, including the Strengthening Grantham project, Brisbane ferry terminals and Riverwalk; and \$50 million to contribute to regional and remote councils employing people to perform clean-up and repair work.
- **Cassowary Coast Support Package - \$15 million** - Funding to restore vital council infrastructure and restore natural vegetation and beach damage in the Cassowary Coast region. Specifically, the Support Package provides for the repair of Dunk Island Jetty, the repair of Clump Point Jetty and the restoration of Cardwell beach foreshore and its natural vegetation.
- **Exceptional Disaster Assistance Scheme** - Concessional interest loans of up to \$650,000, with grant component of up to \$50,000, to eligible businesses, primary producers and not-for-profit organisations that suffered extreme damage.

In addition, the State Government and Commonwealth have agreed to an extended Day Labour Trial, which enables councils to deliver restoration works with their own workforce on condition that they provide evidence of savings in both time and cost.

* Non-NDRRA measures funded 50% by the State and 50% by the Commonwealth; Commonwealth share is being delivered directly through existing Commonwealth programs.

Section three:

Program Status



3.0 Program Status

3.1 Recent developments

During March, the Authority submitted the audited 2013-14 claim for NDRRA financial assistance to the Commonwealth. The Claim acquitted more than \$5.7 billion of eligible expenditure and is the largest in Australia's history. The claim was finalised following the close out and audit of the massive volume of works completed prior to 30 June 2014 on the 2011, 2012, 2013 and 2014 events. The Commonwealth's reimbursement to the State of its share of NDRRA expenditure is dependent on lodgement of the audited claim.

Following Tropical Cyclone Marcia, the Authority is assisting affected Councils with their progress towards recovery and reconstruction. Since the last report, the State has adopted the Severe Tropical Cyclone Marcia Recovery Plan (the Recovery Plan) to guide the activities which will help ensure that impacted communities recover as quickly as possible from the disaster. During March, there has also been additional NDRRA relief measures activated for Tropical Cyclone Marcia and the activation of relief measures following Tropical Cyclone Nathan.

With the next milestone nearing for completion of eligible works for the 2013 events, the Authority is focused on delivery of the remaining program of works from Tropical Cyclone Oswald and other events of 2013 by 30 June 2015 and the progression of the 2014 and 2015 events through the damage assessment, submission preparation and approval and delivery phases.

Since the last report, the Authority has also completed its regular review of damage estimates, which involved a complete review of the program of each LGA and State agency for works arising from disaster events managed by the Authority. Further details are provided below.

3.2 Combined program status

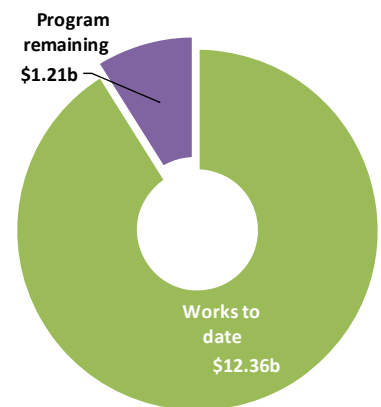
Following the February 2015 NDRRA estimates review process, the estimated program of works for all events actively managed by the Authority (2009 to 2015) has been revised to \$13.57 billion.

The review included preliminary estimates for the 2015 events as well as updated estimates for the 2013 and 2014 events which are currently in the delivery phase. Following lodgement of the 2013-14 Claim, the review also reflects the final eligible costs for the majority of the 2011 and 2012 event works which were completed by 30 June 2014.

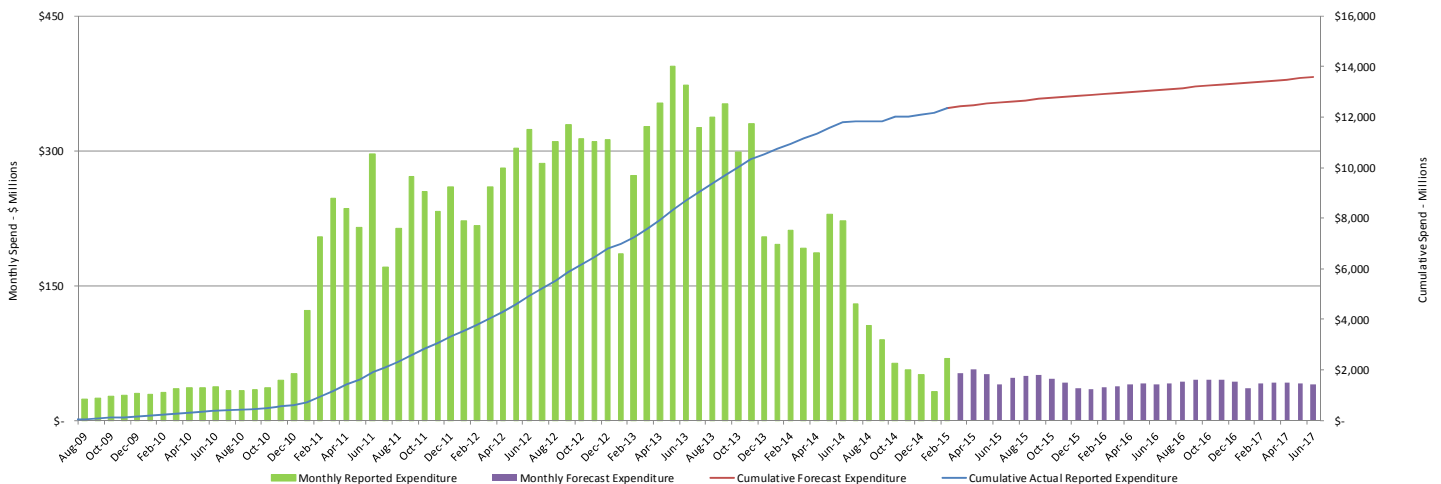
The estimated cost of the damage from the 2015 Events is \$748 million, the damage from the 2014 and 2013 Events is estimated to be \$411 million and \$1.9 billion respectively and the preliminary final cost of the 2012 and 2011 Events is estimated to be \$1.5 billion and \$6.6 billion respectively. The cost of the 2009-10 Events managed by the Authority has been finalised at \$2.4 billion.

Since the last report, the combined program of works for all events managed by the Authority has progressed as follows:

- a cumulative value of \$18.2 billion in submissions have been received by the Authority to 30 March 2015, an increase of \$13 million since last month
- a cumulative total of \$18.1 billion has been processed by the Authority to 30 March 2015, an increase of \$36 million since last month
- a cumulative value of \$12.36 billion of the revised \$13.57 billion works program (2009 to 2015) has been reported to the Authority as being in progress or delivered by delivery agents as at 28 February 2015.



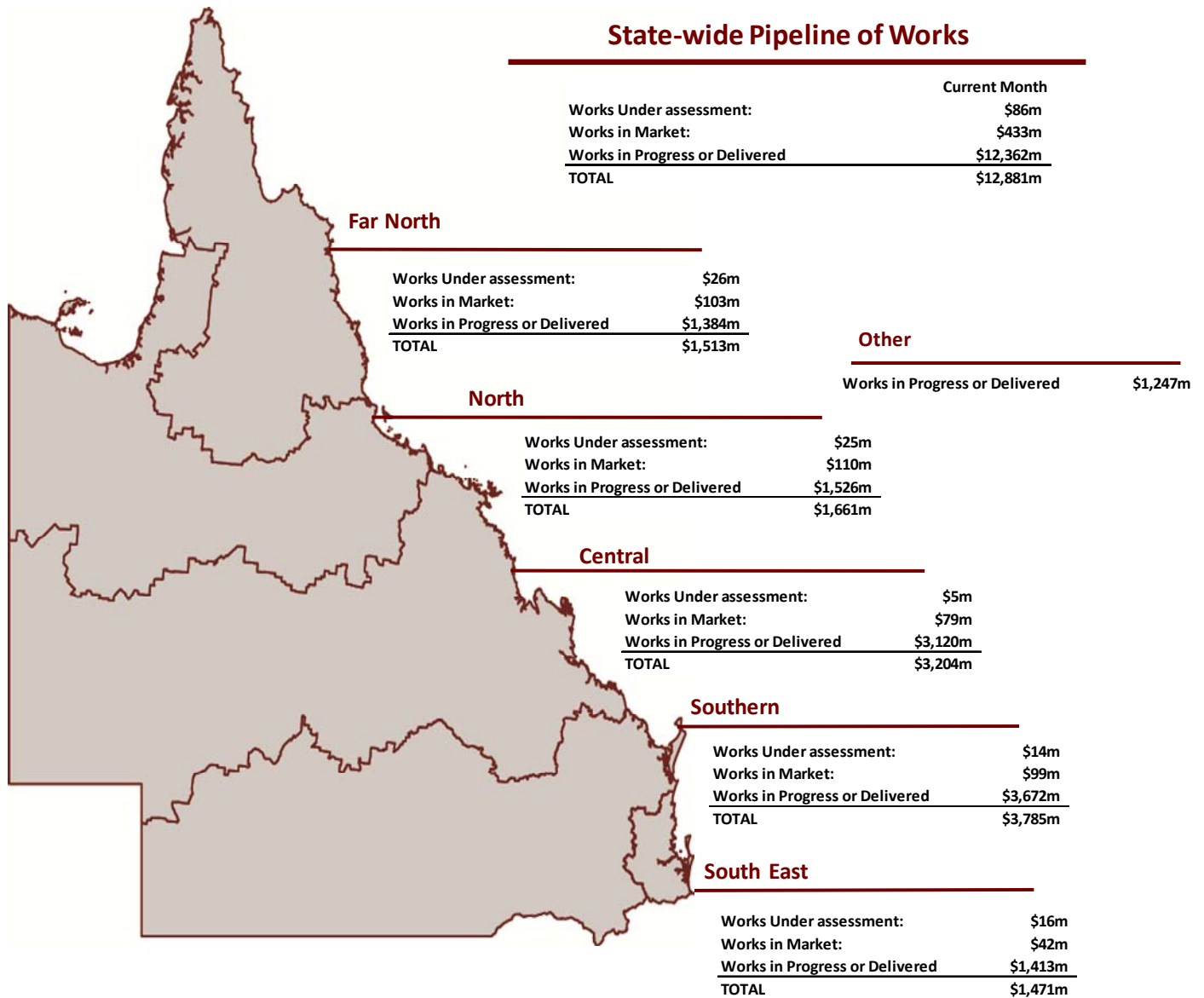
3.3 Program of works expenditure



Source: the Authority - February 2015 NDRRA Estimates Review & 30 March 2015

3.4 State-wide pipeline of works

Following completion of the February 2015 NDRRA estimates review process, the Pipeline of works for events actively managed by the Authority (2009 to 2015) has an estimated program value of \$13.57 billion, the status of which is set out below.



Source: DTMR at 28 February 2015; & Authority at 30 March 2015

Note:

1. Works Under Assessment and Works in Market represents data as at 28 February 2015 (DTMR) and 30 March 2015 (LGAs and Other). Works in Progress or Delivered represents spend by delivery agents to 28 February 2015 as reported to the Authority at 30 March 2015. Additional works have been conducted but are yet to be reported to the Authority
2. Other encompasses SDAs other than DTMR as well as the 2011 and 2013 Other Assistance.

Pipeline of Works Definitions

Stage	Description
Works under Assessment	Applications for packages which are currently under assessment by the Authority or are awaiting additional information from the applicant.
Works In Market	Estimate of spend remaining on works in progress and packages which have been approved by the Authority and are in the tender or contract process.
Works in Progress or Delivered	Expenditure as reported to the Authority on packages in progress or delivered.

Source: DTMR at 28 February 2015; and the Authority at 30 March 2015

3.5 State-controlled roads and highways

DTMR set up its Transport Network Reconstruction Program (TNRP) to manage the recovery and reconstruction of Queensland's integrated transport system following the damage from natural disaster events in 2010, 2011, 2012 and 2013. For the 2014 events, DTMR is managing the recovery and reconstruction works through its Program Management and Delivery Unit. The reconstruction program required as a result of 2015 event damage to the State's transport network has not yet been scoped.

To 28 February 2015, DTMR has spent more than \$6.6 billion on recovery and reconstruction of the transport network across the State arising from the natural disaster events that occurred between 2010 and 2015.

The transport system includes state-controlled roads, ports, navigation aids and the rail network:

- **Roads** – DTMR has substantially completed its entire 8,741km reconstruction works arising from the 2010 to 2013 disaster events with only minor works remaining to be undertaken on some sites. DTMR is currently undertaking its 2014 event reconstruction program, and undertaking recovery works and scoping of its reconstruction program for the 2015 events.
- **Rail** – All Queensland Rail lines closed or affected by natural disaster events have been recovered.
- **Maritime** – Repairs have been required to navigation aids, jetties and other boating infrastructure following natural disasters from 2010 to 2015. All ports and aids to navigation damaged by natural disaster events have been recovered.

Progress of 2014 event works

- DTMR is forecast to reconstruct 215km of roads following damage from the 2014 events. As at 28 February 2015, 124km of reconstruction works have been completed and a further 32km is under construction on active works contracts. Works completed include restoration works on 31 structures including bridges and culverts, and 51 locations requiring earthworks and batters.
- During February 2015, DTMR completed works on 20 kilometres of roads including works on Kennedy Developmental Road and Millaa Millaa–Malanda in Far North District. DTMR also commenced construction on projects on Captain Cook Highway and Mossman–Daintree Road in Far North District during the month.

Progress of recovery of State transport network from Tropical Cyclone Marcia

- A number of roads and highways were closed as a result of Tropical Cyclone Marcia including the Burnett, Dawson and Leichhardt Highways. Significant damage occurred on the Dawson Highway at Calliope where three bridges on Collards Creek were affected and on Monto–Mount Perry Road, Yarrol where the Burnett River Bridge was washed away.
- Following a quick mobilisation into reconstruction works, the Collards Creek Bridge on the Dawson Highway at Calliope reopened on Friday 13 March 2015. A profile of the project is provided in Section 4.3.
- Monto–Mount Perry Road at Yarrol remains closed to all vehicles due to bridge and culvert damage. Whilst closed, an alternative route is available to drivers. Options to reconstruct the Burnett River Bridge and its approaches on Monto–Mount Perry Road are currently being investigated.
- Numerous rail lines were closed and services including the Spirit of Queensland and Rockhampton Tilt Train were disrupted. The full rail system has re-opened
- Port Alma and the Port of Bundaberg were closed as a result of the event but have both since reopened with restrictions in place.



Gregory Developmental Road – preparation work prior to gravel re-sheet



Kennedy Developmental Road – commencing pavement stabilisation

(Source: DTMR, 28 February 2015)

3.6 Betterment fund status

The \$80 million Betterment fund is a Category D relief measure available to LGAs that have been declared for NDRRA assistance for the flood, storm and cyclone disaster events that occurred in Queensland in early 2013 for the restoration or replacement of essential public assets to a more disaster resilient standard than their pre-disaster standard.

The Betterment Fund was announced in February 2013 following Tropical Cyclone Oswald which caused damage to many of the assets which had been repeatedly damaged and restored from earlier disaster events. Correspondence was received from the Commonwealth in August 2013 agreeing to an extension of the Betterment fund to also cover LGAs declared for the two additional disaster events that occurred after Oswald through to June 2013 - Longreach Flood (18 February 2013) and Central and Southern Queensland Low (25 February to 5 March 2013).

Status

Expressions of Interest (EOI) were received by the Authority from 48 councils with approximately \$1 billion worth of Betterment projects to improve the resilience of infrastructure to natural disasters. Under the Betterment Framework, in addition to the normal NDRRA submission assessment process, the Authority considered the financial and non-financial benefits of the betterment proposal such as possible prior damage, loss of availability and its impact on economic or social factors of the community.

The Betterment Fund has now been allocated to 232 approved projects across 35 LGAs. These projects comprise Category B NDRRA funding for the restoration component of the works, a capped allocation from the Betterment fund for betterment works and Council contributions. Betterment projects include improved bridges, floodways, culverts, levees, water treatment plants and numerous roads across Queensland.

To date, 158 Betterment projects worth approximately \$96 million, and including \$43 million funding from the Betterment fund, have been reported to the Authority as practically complete. The remaining approved projects are due to be complete by 30 June 2015 and are expected to utilise the remaining funding from the \$80 million Betterment cap.

Betterment funding is allocated on the basis of the estimated cost of the approved projects. Should the betterment component of a project be delivered for a cost below the capped allocation, then the savings will be returned to the Betterment Fund for allocation to other eligible projects.



Following the 2013 floods, Villis Bridge west of Aratula was completely washed away restricting access to residents and primary producers (top). With funding from the Betterment Fund, a new, more resilient concrete bridge was constructed by Scenic Rim Regional Council (bottom)

Aurukun Access Road provides the only road connection between Aurukun and Weipa and has been repeatedly damaged by successive events (top). Aurukun Shire Council's Betterment project to upgrade a 10km section to bitumen provides a safer, all-weather access route and was completed in October 2014 (bottom)

Moreton Bay Regional Council's Margate seawall was severely damaged by intense weather generated by Tropical Cyclone Oswald in January 2013 (top). The wall provides protection for essential public assets and services located adjacent to the foreshore, including stormwater drainage and underground utilities. Betterment works were completed in August 2014 (bottom)

Section four: Progress Reports



4.1 Severe Tropical Cyclone Marcia Recovery Plan

The Recovery Plan has been prepared to guide the activities which will help ensure that impacted communities recover as quickly as possible from the devastating and widespread effects of Severe Tropical Cyclone Marcia.

The Recovery Plan provides strategic guidance for the coordination and management of recovery, reconstruction and disaster resilience activities and initiatives undertaken by the Queensland Government, local governments, industry and other stakeholders after the event. It also provides strategies to work with affected communities in their recovery process.

The Recovery Plan identifies key recovery tasks, recovery milestones and estimated completion dates of the projects to be undertaken by Queensland Government lead and support agencies over the recovery and reconstruction phase.

Recovery phases

The recovery activities will be undertaken across three broad phases.

Phase one is already complete with post-impact recovery activities deployed immediately after the cyclone crossed the coast. Phase Two Recovery and Reconstruction is now underway and will conclude on 30 June 2017 when NDRRA funding timelines expire for this event, while Phase Three will see any outstanding recovery initiatives transition to agencies to be managed.



Disaster Recovery Coordinators

On 23 February 2015, Acting Commissioner Katarina Carroll, Queensland Fire and Emergency Services was appointed as the interim Disaster Recovery Coordinator for two weeks before Acting Assistant Commissioner Brian Codd, Queensland Police Service took over the rebuilding task. The Disaster Recovery Coordinator coordinates the recovery process for affected areas, and the recovery and reconstruction efforts of government and non-government agencies.

Functional lines of recovery

Functional Recovery Groups (FRG) have been established to lead and coordinate the planning and implementation of State whole-of-government recovery across five lines of recovery. The roles and responsibilities of each FRG are set out in the Recovery Plan and are summarised below.

FRG	Role	Key responsibilities
Human & Social	To lead and coordinate the planning and implementation of human and social recovery activities in line with the Recovery Plan.	<ul style="list-style-type: none"> Provision of strategic advice on human and social recovery issues and services Coordination of human and social services to support the recovery effort delivered by state, local and Australian Government agencies, non government organisations and other relevant service providers Coordination of financial assistance to eligible applicants for the Personal Hardship Assistance Scheme (PHAS) and Essential Services Safety and Reconstruction Scheme under NDRRA or State Disaster Recovery Arrangements Coordination of the provision of personal support, counselling and specialised mental health services and facilitation of the redevelopment of social networks and community infrastructure to strengthen and build resilience.
Economic	To advise the Government on economic impacts and provide information on needs of local government and industry getting the economy back to full production.	<ul style="list-style-type: none"> Provision of strategic advice on economic recovery issue and services Identification of economic impacts and key issue that inform recovery efforts Coordinate activities to assist in restoring the economy including assistance business, industry and regional recovery and renewal through targeted support and assistance.
Environment	To guide the Government in achieving sustainable and resilient environmental recovery and coordinate activities which the make best use of resources.	<ul style="list-style-type: none"> Identification and monitoring of impacts on the environment and the provision of strategic advice to inform recovery efforts Coordinate and prioritise the rehabilitation of impacted ecosystems, wildlife, natural resources, cultural heritage values and heritage places Consideration of strategies to reduce future impacts on the environment.
Building	To lead, coordinate and action temporary accommodation solutions for displaced people; repair and reconstruct state building assets; and provide building advisory services to support community recovery.	<ul style="list-style-type: none"> Facilitation of solutions to address immediate and longer-term temporary accommodation needs of community members and the recovery workforce Assessment and coordination of the repair and restoration of State public buildings Support and provide advice to the recovery supply chain including contractors, sub-contractors and material suppliers.
Roads & Transport	Coordinates the efficient and effective delivery of road and transport recovery activities.	<ul style="list-style-type: none"> Deliver the state-controlled roads and transport response and reconstruction, including assessing damage, prioritising and delivering recovery and reconstruction activities and considering resilience and disaster mitigation measures as part of the works.

The Authority will provide support to the Disaster Recovery Coordinators, continue to work in partnership with local governments and State agencies to manage and coordinate the reconstruction of essential public assets.

www.dlg.qld.gov.au/resources/plan/local-government/tc-marcia-recovery-plan.pdf

4.2 Iconic projects in reconstructing Queensland*

Project	Value (\$m)	Description	Status
BCC Ferry Terminals (Cat D)	\$73	<p>The January 2011 floods damaged all of Brisbane City Council's CityCat and City Ferry terminals. To return service as soon as possible, Council replaced the seriously damaged terminals with temporary terminals. Seven temporary terminals were built to pre-flood standards meaning that in the event of another major flood, it was likely it would need to be rebuilt again.</p> <p>Works to replace the terminals with more resilient, permanent structures are being delivered as part of a special (Category D) funding package for Brisbane City Council. The design of the new terminals integrates technical innovation, improved accessibility for all passengers and flood resilience.</p> <p>The replacement ferry terminals are located at The University of Queensland (St Lucia), Regatta (Toowong), North Quay (CBD), Maritime Museum (South Brisbane), QUT Gardens Point (CBD), Holman Street (Kangaroo Point) and Sydney Street (New Farm).</p> <p>Completion of all ferry terminal works is required by mid-2015.</p>	<p>The first ferry terminal project to reach completion, the Regatta terminal, opened on 25 March 2015. Refer Section 4.3 for a profile of the project.</p> <p>All other ferry terminal works are underway and are being delivered by McConnell Dowell Constructors.</p> <p>The pontoon and gangway at QUT Gardens Points has now been installed with final fit-out works ongoing. The terminal is expected to open in April 2015, weather permitting.</p> <p>The new University of Queensland (UQ) CityCat terminal and Sydney Street terminal are expected to both open in May 2015, weather permitting. At UQ, fabrication of the pontoon and gangway and landside works are nearing completion.</p> <p>Fabrication of the gangway and pontoon at Sydney Street is also currently underway ahead of its installation planned for mid-April. The abutment structure and landside works at the terminal are both reported to be approximately 90% complete.</p> <p>Land-based civil works were completed on the Holman Street terminal site during March. Fabrication of the gangway and pontoon is reported to be progressing well with the terminal expected to be opened in June 2015.</p> <p>Works on the waiting areas for the North Quay terminal is underway. Following land based works and piling works completed on the Maritime Museum in October 2014, works have now recommenced following closure of the terminal in March 2015. At month end, works on waiting area and walkway structure works are ongoing and landside works are approximately 80% complete.</p>



Above: construction of the walkway at Maritime Museum terminal (top); and installation of pontoon timber at QUT Gardens Point (bottom) during March 2015..

Right: Fit out of gangways (top); and pontoon roofing and ceiling cladding works on the portal frame and over-water waiting area at Regatta terminal (bottom)

* Iconic projects represent projects that may be complex or of great significance to the local community.

4.2 Iconic projects in reconstructing Queensland (continued)

Project	Value (\$m)	Description	Status
Somerset Regional Council bridges and crossings (Cat B and Cat D)	\$13m	<p>Somerset Regional Council is undertaking a series of restoration and betterment projects to make its network of bridges, crossings and culverts across the region more resilient to flooding.</p> <p>The crossings have repeatedly been damaged and in some cases destroyed through successive flood events, most recently in 2013 resulting in road closures and significant disruption to the local communities.</p> <p>Many local farmers have no practical alternative way of getting their produce to markets other than over a Council bridge. The bridges also provide many residents with the only access to their properties. In other cases, property owners are required to take lengthy detours if bridges are closed.</p> <p>The betterment works generally include the part or full replacement of existing timber bridges or causeways with sustainable concrete structures.</p>	<p>To date, all of Somerset's bridge and crossing projects have been physically constructed and reopened to traffic other than one remaining project on O'Leary's Lane.</p> <p>The final project to replace the timber Dunnings bridge on O'Leary's Lane is currently under construction with works expected to be completed in April 2015, weather permitting.</p> <p>All other crossing works are now complete and open. During March 2015, the road approaches to Kropps bridge and the approaches to the Toogoolawah Pedestrian Bridge were completed.</p> <p>Works completed to date include Jones Bridge on Gregors Creek Rd, Wunulla Lane Bridge, Scrub Creek Rd Bridge, George Bell Crossing on Ivory Creek Road, Buaraba Creek causeway on Rocky Gully Rd, Savages Bridge approaches on Banks Creek Rd and the extension of Brisbane River causeway No. 1 on Mt Stanley Rd.</p> <p>Jones Bridge on Gregors Creek Road was constructed by council day labour with the remaining works constructed by Council's approved contractor panel.</p>



The completed Toogoolawah pedestrian bridge



The completed Jones Bridge on Gregors Creek

4.3 Program spotlights

DTMR

TC Marcia - swift response to Dawson Highway bridge closure

The Biloela area experienced significant rainfall as a result of Severe Tropical Cyclone Marcia on Friday 20 February 2015.

The subsequent flash flooding caused the eastern abutment of Collard's Creek Bridge No. 1 on the Dawson Highway, between Gladstone and Biloela, to wash away. The highway is a key transport route for industry, agriculture and the resource sector in Central Queensland.

An on-site initial assessment of the damage was undertaken by inspectors on the day following the event, following which DTMR closed the highway with a detour for light vehicles established via a local road.

The recovery response was swift with DTMR mobilising to site the very next day, Sunday 22 February 2015 to undertake debris clearing and site preparation works. An office-based engineer also immediately commenced scoping the design and materials.

DTMR's Engineering and Technology structures team then visited the site to meet with the project and site engineers on Monday 23 February 2015.

Within a week of the event, a preliminary design was in place and construction of mass blocks was under way. By Monday 2 March 2015, a fully scoped design was in place.

More than 20 personnel across an earthworks crew and a concreting crew worked around the clock to complete the reconstruction works and reopen Collard's Creek Bridge No. 1 to traffic by Friday 13 March, only two weeks after the damage occurred.

Right: Repair work to Collard's Creek Bridge nears completion



Damage to the eastern abutment of Collard's Creek Bridge following Tropical Cyclone Marcia



Damage to the Regatta City Cat Terminal during the 2011 floods (top); and Brisbane City Council Lord Mayor Graham Quirk re-opening of the new, more resilient terminal on 25 March

Brisbane City Council First ferry terminal opened

On Wednesday 25 March 2015, the first of Brisbane City Council's seven new flood resilient ferry terminals was unveiled to the public, with the opening of the new Regatta Ferry Terminal, in Toowong.

The re-opening of the Regatta Ferry Terminal returns an essential service to the people of Brisbane and is one of the final steps in the recovery process from the events of 2011.

The January 2011 floods damaged all of Council's CityCat and City Ferry terminals. To return service as soon as possible, Council replaced the seriously damaged terminals with temporary terminals.

The design of the new terminals integrates technical innovation, improved accessibility for all passengers and flood resilience. The new Regatta Ferry Terminal is equipped with a state of the art gangway that will detach at the shore end during a significant flood event, allowing it to swing behind the pontoon to avoid being struck by debris.

The new terminal has also been designed to ensure ease of access for people with mobility difficulties and those using strollers or prams. The gangway is designed to maintain intermediate level landings even as the river rises.

All of Brisbane's seven new and improved ferry terminals are designed to be flood resilient and are due for completion by 30 June 2015. The projects are being upgraded as part of a special \$145 million NDRRA Category D funding package for the Brisbane Riverwalk and ferry infrastructure reconstruction.

4.3 Program spotlights (continued)

Hope Vale Aboriginal Shire Council Elim Beach Road Betterment project withstands Tropical Cyclone Nathan

In the aftermath of Tropical Cyclone Nathan's journey across Cape York, residents of the remote Aboriginal community of Hope Vale were relieved when their recently improved road network withstood the onslaught.

Elim Beach Road is Hope Vale Aboriginal Shire Council's flagship Betterment project. The road connects the residents of Hope Vale with the coastal township of Elim Beach, a popular destination for locals and tourists attracting more than 3,000 visitors annually.

Elim Beach Road is also a key access road for residents of outlying communities to a multi-purpose centre used as a safe refuge in Hope Vale. It also provides vital access to part of the town's water-supply bore field that is situated along the road.

Prior to betterment, the unsealed sections of Elim Beach Road suffered regular washouts during cyclone season, closing the road for extended periods and isolating the community.

Council's betterment project sealed a 4.1km section that had been repeatedly damaged in 2011, 2012 and 2013 with bitumen, making it far more resilient and immune to flooding.

Following delivery of the initial works under budget, Council was subsequently approved to begin works to seal a further 2km section of the road. These works were underway when Tropical Cyclone Nathan crossed the coast.

When the floodwaters slowly receded following the cyclone, it was clear that the betterment project had been a success.

In previous years, the original 4.1km section would have been left unpassable as a result of flood damage. However, following Cyclone Nathan, the section of road was able to be immediately opened to traffic.



Elim Beach Road prior to Betterment works



Left: Section of Elim Beach Road upgraded to bitumen with Betterment funding following Tropical Cyclone Nathan

The \$1.8 million Elim Beach Betterment project was delivered by Hope Vale Aboriginal Shire Council, with a combination of Category B NDRRA funding, Betterment funding and a \$10,000 contribution from Council.

Council estimates that the use of its internal day labour work force on the project also achieved savings of more than \$0.5 million.

Section five: Communications



5.0 Communications

The Authority is focused on building stakeholder confidence in the reconstruction by ensuring consistent and regular communication of public information.

5.1 Communicating progress

Media analysis

There has been a total of 621 media items in March 2015 (204 print – 33%, 121 TV – 19%, 296 radio – 48%), which reached a cumulative audience of over 20 million people, with the focus being on the ongoing recovery efforts from Tropical Cyclones Marcia and Nathan.

There were media mentions for regions recovering from the current and previous natural disaster events, including articles in AAP Newswire, The Australian, Cairns Post, Capricorn Coast Mirror, Central and North Burnett Times, Central Telegraph, Clifton Courier, Cooktown Local News, The Courier-Mail, Daily Mercury, Dalby Herald, Fraser Coast Chronicle, Gladstone Observer, Nambour Weekly, News Mail Bundaberg, Noosa News, Port Douglas & Mossman Gazette, Queensland Country Life, Rockhampton Morning Bulletin, South Burnett Times, Sunday Mail, Townsville Bulletin, Toowoomba Chronicle, Torres News, The Valley Weekender, and the Whitsunday Times; TV coverage on Sky News, the ABC, Nine, WIN and Seven networks throughout the State; and radio mentions, including on ABC Radio Queensland, Radio National, 4RO Rockhampton, 4WK Toowoomba, 4BC, River FM Ipswich, 4CA Cairns, and Radio 4KZ Innisfail.

The announcement of the proposed extension of the Authority also made news during the month with articles in the Daily Mercury, The Courier-Mail, Gladstone Observer, Rockhampton Morning Bulletin, and The Australian; as well as radio and TV mentions on the ABC, Nine, WIN and Seven networks and ABC Radio Queensland, Hot FM 91.1 Sunshine Coast, 4BC, and 4WK Toowoomba.

Engagement activities

On 10 March 2015, **Queensland Deputy Premier and Minister for Infrastructure, Local Government and Planning Jackie Trad** and **Authority Chief Executive Officer, Frankie Carroll** visited Gladstone Regional Council and met with Mayor Gail Sellers, other Councillors and various Council staff to discuss and inspect damage from Tropical Cyclone Marcia.

On 27 March 2015, **Deputy Premier Trad** introduced an amendment to Parliament repealing the sunset clause of 30 June 2015 from the *Queensland Reconstruction Authority Act 2011* to ensure the Authority can continue the critical work of helping communities effectively and efficiently recover from the impacts of natural disasters that have devastated Queensland over recent times, including Tropical Cyclone Marcia.

Communications

There are a number of methods available to the public to communicate with the Authority.

The Authority's website provides information to the public and continues to be enhanced with ongoing updates, including information about Betterment projects and current recovery efforts. There have been a large number of visits to the website since it was launched on 18 February 2011. At 31 March 2015, total website visits amounted to 460,459 - a 1% increase since last month.

(See Figure 5.1.1)

In March, the Authority received an additional 120 calls to its dedicated hotline and 296 additional pieces of written correspondence were received. (See Figure 5.1.2)

Fig. 5.1.1 Website traffic

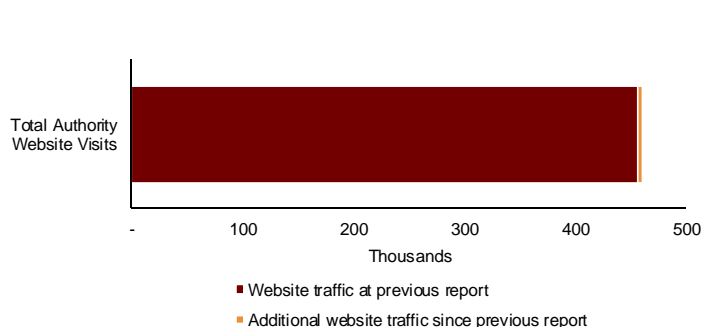
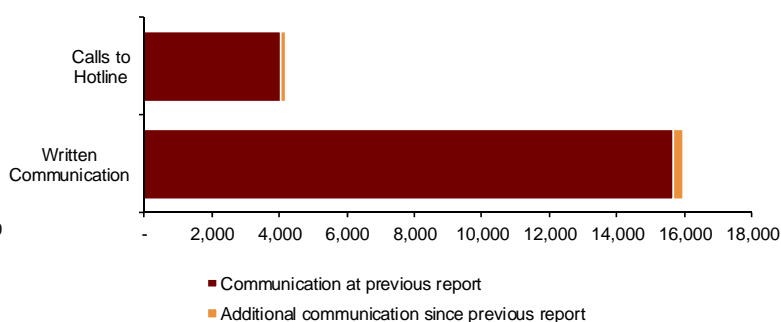


Fig. 5.1.2 Communications



(Source: the Authority at 31 March 2015)

5.2 Media reports

Thank you for helping out

Strong community spirit will allow our region to bounce back

Livingstone Mayor Bill Landry has written an open letter to the community in the wake of Tropical Cyclone Marcia.

TODAY is day ten of what will be many long and challenging months of recovery effort ahead. So far we have pulled together with a community spirit that has been nothing short of outstanding.

It is important that we keep that spirit going as we prepare for the many challenges ahead to get lives, businesses and our economy back to normal.

As recovery efforts continue across the region it is important that we also take every opportunity to express our heartfelt thanks to the individuals, groups and agencies both government and non-government who have come to our assistance in this time of greatest need.

Special recognition must also go to the community champions who were the first on the ground giving assistance, from opening up blocked rural roads with chainsaws and privately owned machinery to helping neighbours.

To our council workforce, SES and Rural Fire Brigades, including hundreds of volunteers from other areas as well as our Australian Defence Force reservists and regulars, this community owes you all a huge debt of gratitude that will not be forgotten.

Ergon Energy must also be commended for

mobilising 1000 staff in specialist work crews into the field, who have spared no resource or effort to get power restored as quickly as possible.

We realise that there are many people who are still without power due to localised safety issues and remote locations. To those residents Ergon appreciates your patience as crews work through those issues.

As a community we can be thankful that there was no loss of life or serious injury.

Had Cyclone Marcia not crossed the coast where it did, sparing us a devastating and likely lethal storm surge, this may not have been the case. Similarly people exercising common sense by evacuating early when requested by the police and SES contributed to keeping us safe.

We are also fortunate to have had Federal and State Members in Michelle Landry and Britney Laing.

This community will be coming on them to work together with the council to secure the exceptional funding we will need to rebuild Livingstone and our region.

Morning Bulletin, 2 March 2015

More help for those Marcia left in the dark

The Courier Mail, 2 March 2015

SARAH VOGLER

CENTRAL Queenslanders still struggling without electricity could be eligible for up to \$1000 in food vouchers as more assistance is made available for the region following Tropical Cyclone Marcia.

Deputy Premier Jackie Trud (pictured) said the Government would provide an extra \$200 in food vouchers, up to a maximum of \$1000 per family, for those still experiencing hardship in a move expected to cost \$5 million.

It comes as Ms Trud said she expected the total cost of the damage to the state's infrastructure to total 'hundreds of millions of dollars.'

Ms Trud said the move to

provide more assistance came after locals voiced their concerns at changes to the Natural Disaster Relief and Recovery Arrangements made last year which meant the loss of electricity no longer qualified.

Ms Trud said almost \$1 million in assistance had already been provided to residents.



Deputy Premier Jackie Trud (pictured) said the Government would provide an extra \$200 in food vouchers, up to a maximum of \$1000 per family, for those still experiencing hardship in a move expected to cost \$5 million.

Cyclone vouchers

FOOD vouchers will be made available to help people in the North Burnett region still suffering as result of ex-tropical Cyclone Marcia.

Yesterday the State Government announced it was increasing the help available under the joint Queensland and Federal Governments' Natural Disaster Relief and Recovery Arrangements.

Deputy Premier Jackie Trud said the additional support, in the form of food vouchers of \$200 for each individual and up to a maximum of \$1000 per household, was recognition that many people in impacted areas were still in need of immediate support.

To be eligible the household needs to have been without power for seven days or more, and be suffering hardship. For more details, phone 1800 173 349 or visit www.qld.gov.au/community.



TEAM EFFORT: Bill Ludwig, Warren Truss and Michelle Landry talk to tree-planting crews at Yppoon High School.



Ergon and Ergon crews work to restore power to homes in Yppoon after Cyclone Marcia cut electricity.

Morning Bulletin, 2 March 2015

Businesses back on track

Tourism operators open after cyclone

Lisa Benoit

www.brisbanetimes.com.au

HOLIDAYING in your own backyard is one of the best ways to help Capricorn Coast tourism operators get back on their feet.

A number of attractions have already reopened their doors after Cyclone Marcia, while others are busy rebuilding and cleaning.

Tourism Minister Kate Jones was in Yppoon last week to make sure everyone knows the region is open for business, kicking off a new marketing campaign promoting the Southern Great Barrier Reef.

"We want to let everyone know that following Tropical Cyclone Marcia our major tourist attractions in the Southern Great Barrier Reef region are quickly getting back to business," Ms Jones said.

Capricorn Enterprise CEO Mary Carroll said the region couldn't afford to have tourists and residents cancel their bookings for Easter.

And it's not only tourism operators - local small businesses took a hit in the cyclone and couldn't trade for days.

"Cash is king in small business and tills have to keep ticking for small businesses to pay wages,

and then those employees spend money in their own community," Ms Carroll said.

"The loss of consumables and structural damage is one thing but the loss of trade is another. Capricorn Enterprise is putting its focus towards the new campaign, Where Great Begins, which kicks off on Sunday and needs coverage nationally and internationally as well.

Ms Carroll said the media provided coverage during the cyclone, but they now needed the same marketing on the region's recovery efforts to ensure that tourists knew operators were back open for business.

Ms Carroll said while there might be some local businesses that couldn't survive after the impact of the cyclone, there were others that would be back on their feet and needed support.

"Residents need to keep shopping locally and we have to encourage people, including friends and family, to visit our destinations," she said.



BUSINESSES ON TRACK: Livingstone Mayor Bill Ludwig, Minister for Tourism Kate Jones, Capricorn Enterprise CEO Mary Carroll and Regional MP Marissa Langee open hotels in local tourism operators.

Morning Bulletin, 3 March 2015

News Mail, 2 March 2015

Flood help is ongoing

Relief staff give further support to cyclone-hit areas

CENTRAL Highlands Regional Council staff who answered the first calls for help from neighbouring councils have returned to the region and are back at work, but more assistance is being provided by a further contingent of relief staff.

Council initially deployed more than 25 staff to Rockhampton to help with the clean-up and recovery after Cyclone Marcia hit.

A further team of seven administrative staff provided relief in the Disaster Co-ordination Centre at Biloela, while four were deployed to Woorabinda Shire in supportive roles as electricity and phone

services were down. A team of 11 staff remain helping ground crews in Rockhampton.

They will remain there until at least Friday. All Central Highlands Regional Council staff deployed to Biloela and Woorabinda have now returned to work.

"Our staff are continuing to demonstrate commitment above and beyond," said Central Highlands chief executive Scott Mason.

In Rockhampton, crews have been lending a hand to the Rockhampton council crews in loading, cutting, chopping, sawing, chipping, sweeping and any other required jobs.

RECOVERY FUNDING NEEDED

Trad surveys flood damage

THE council told Ms Trud it wanted to use its own day labour, rather than outside contractors, to complete flood repairs.

Under current legislation, money awarded under the NDRA would have to be distributed to outside contractors to do the work.

Mayor Don Wagh said if the council's own labour and local contractors did the job it would be completed faster and cheaper.

But local business people such as Amy Burrows, at Cafe Delicious, would prefer contract workers came to town and restore the town's economy.

"The contractors that were here last time [after 2011 floods] were very beneficial to the whole economy," she said.

"They spent money in town. They rented houses. They rented shops."

NDRA funding There are four categories of funding. Category D is for exceptional circumstances assistance beyond Category C. It is awarded to severely affected communities, regions or sectors. It includes clean-up and recovery grants for small businesses and primary producers and the establishment of a community recovery fund. It is a reduction to assistance under categories A and B. It is required from the states and requires agreement from the prime minister.

Category D is for exceptional circumstances assistance beyond Category C. It is awarded to severely affected communities, regions or sectors. It includes clean-up and recovery grants for small businesses and primary producers and the establishment of a community recovery fund. It is a reduction to assistance under categories A and B. It is required from the states and requires agreement from the prime minister.

Category D is for exceptional circumstances assistance beyond Category C. It is awarded to severely affected communities, regions or sectors. It includes clean-up and recovery grants for small businesses and primary producers and the establishment of a community recovery fund. It is a reduction to assistance under categories A and B. It is required from the states and requires agreement from the prime minister.

Grant allows repairs to Seamark Bridge

Brigitte Daley

www.brisbanetimes.com.au

HAMILTON said council held a meeting with all the residents on Seamark Road to discuss timetables for bridge repairs.

"The weather will determine when repairs to the bridge are completed," Mr Hamilton said.

"I appreciated Mungalli Creek Dairy collecting my milk, especially as they had to work longer hours to suit my pick-up arrangements and delivery to the Lion Malanda milk factory."

Tablelands Regional Mayor Rosa Lee Long appreciated QRA "fast forwarding" its normal process for this exceptional circumstance.

"We have been extremely lucky not to have been forgotten by QRA and we are appreciative of this, especially in the light of Cyclone Marcia."

TRC CEO Ian Church said both QRA and TRC have been in constant contact with one another and have been working extremely well together.

"I want to put on the record the co-operative effort of TRC and QRA officers, it's been fantastic," Mr Church said.

Council will need to go through the tendering process, which can take several months and Mr Lee Long thanks the public for their patience in the meantime.

One of the issues with completing the repairs to the bridge is that some of the work must be done when the water

level is at its lowest.

Bridges have proved to be a vexed issue for council this year.

The Wrights Creek Bridge and four other bridges on the Kirrима Road are in poor condition and are subject to load limits.

TRC hopes to win funding for these repairs as well.

Atherton

Tablelander,

17 March 2015

C-Day today for disaster funds

CYCLONE-RAVAGED farmers can expect an elevation to Category C disaster funding today.

Member for Capricornia Michelle Landry last night said she expected the announcement within 24 hours.

"All being well, a Category C rating would finally be rolled out to primary producers and would include substantial subsidies to help those eligible, to recover following Cyclone Marcia," she said.

Ms Landry expects a Category C rating to be applied to small business "sometime later".

"The damage from Cyclone Marcia was overwhelming in a lot of pockets in Byfield and along the coast," Ms Landry said.

"Primary producers and small business owners have been totally gutted in parts of the Livingstone Shire and



DEVASTATED: Rockhampton-based Senator Matt Canavan, Michelle Landry MP and tea tree plantation owner Jordan Slarks at Byfield.

"Category C is come first. But I would support a Category D for some areas, including Byfield, and I encourage the Queensland Government to make a submission for this," Ms Landry said.

"Nothing can move forward on these ratings until Queensland's Premier makes a submission."

Morning Bulletin, 12 March 2015

More help for hurting farmers

Capricorn Coast Mirror, 18 March 2015

ADDITIONAL disaster assistance is now available for primary producers affected by Cyclone Marcia and the associated rainfall and flooding.

The additional assistance provides a helping hand to those suffering the effects of extensive damage to crops, pasture and farming infrastructure.

This assistance will be provided through the jointly-funded Commonwealth-State Natural Disaster Relief and Recovery Arrangements (NDRRA).

Eligible primary producers in the local government areas (LGAs) of Livingstone and Rockhampton and targeted areas within the LGAs of Banana and North Burnett will be able to access grants of up to \$25,000 to assist with their clean-up and recovery cost.

To apply for a clean-up and recovery grant primary producers can contact QRAA on 1800 623 946 or online at qraa.qld.gov.au



Workers clear the street.



HARD WORK: CHRC workers take a break from cleaning.



TRUD STOCK: Deputy Premier Jackie Trud gets into Monto to meet North Burnett Regional Council members and landowners affected by the February flood.

Mayor tours basin as build nears end

"We promised we would deliver a top environmental riparian area and we have done that," she said.

"When you come over this hill and look, it's fantastic... I'm looking forward to working here in the future."

Horicultural officer Peter Hall and nursery worker Chris Allan were on the site working during the week yesterday. Mr Hall will be busy over the coming months weeding until the landscape and other species "show up".

"Once they close in, the weeds will drastically reduce," he said. Mr Hall said many people including himself were unsure of how the basin would look.

"When you come over this hill and look, it's fantastic," he said. "I'm looking forward to working here in the future."

Mr Allan propagated much of the grass in the basin. Before the riparian Services portfolio leader Cr Carol Taylor said she "is thrilled to see what council has delivered."

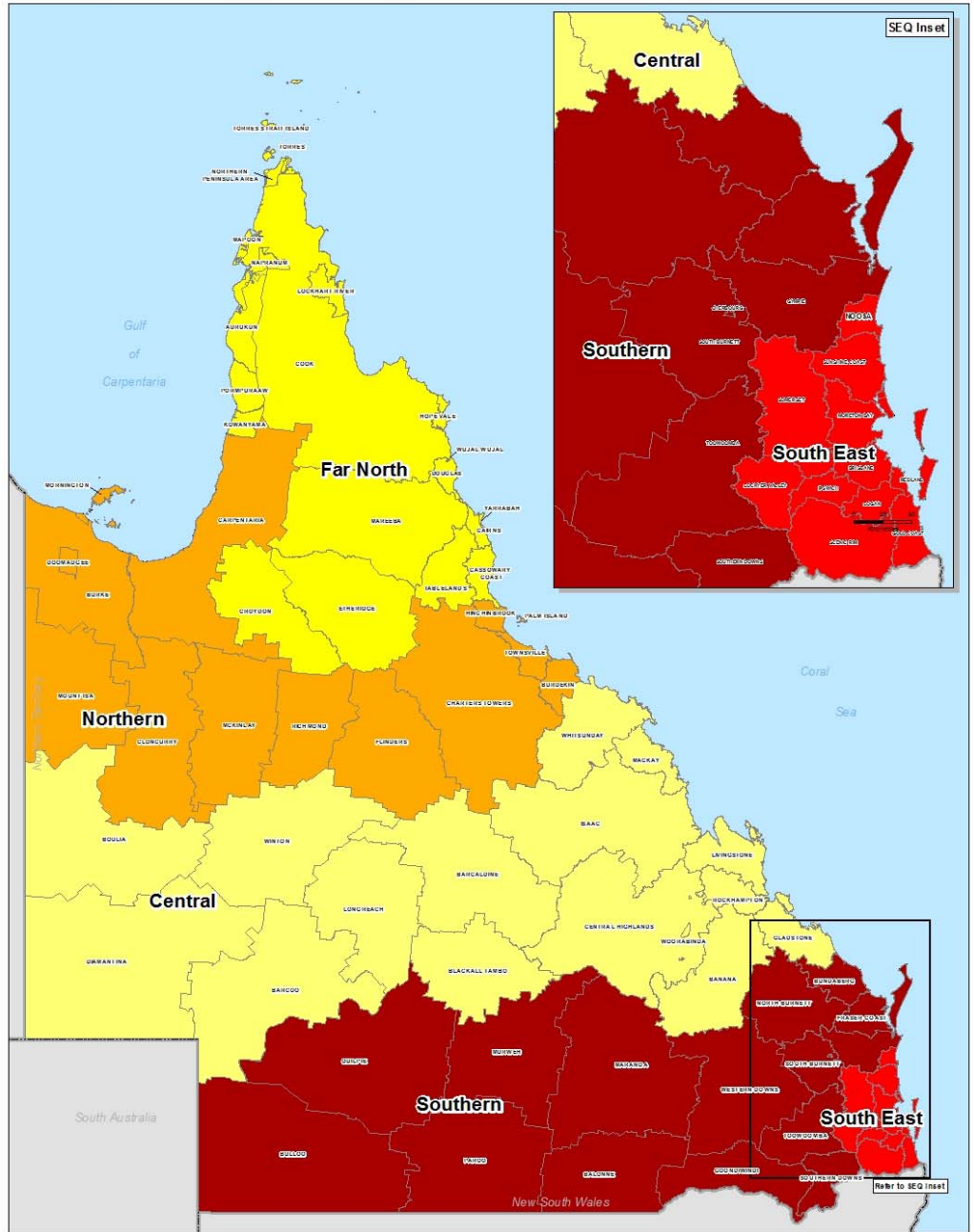


NEAR THE END: At the nearly-completed Ernest Lawson Park, detention basin horicultural officer Peter Hall (left) and nursery worker Chris Allan.

Appendices

Appendix A: Local Government Areas by Region

Region	Local Government Areas (LGA's)	
Far North Queensland (FNQ)	ASC Aurukun Shire Council	
	CRC Cairns Regional Council	
	CCRC Cassowary Coast Regional Council	
	CoSC Cook Shire Council	
	CfSC Croydon Shire Council	
	DSC Douglas Shire Council	
	ESC Etheridge Shire Council	
	HVASC Hope Vale Aboriginal Shire Council	
	KASC Kowanyama Aboriginal Shire Council	
	LRASC Lockhart River Aboriginal Shire Council	
	MASC Mapoon Aboriginal Shire Council	
	MbaSC Mareeba Shire Council	
	NASC Napranum Aboriginal Shire Council	
	NPARC Northern Peninsula Area Regional Council	
	PASC Pormpuraaw Aboriginal Shire Council	
	TRC Tablelands Regional Council	
	TSC Torres Shire Council	
	TSIRC Torres Strait Island Regional Council	
	WWASC Wujal Wujal Aboriginal Shire Council	
	YASC Yarrabah Aboriginal Shire Council	
North Queensland (NQ)	BrdSC Burdekin Shire Council	
	BrkSC Burke Shire Council	
	CSC Carpentaria Shire Council	
	CTRC Charters Towers Regional Council	
	CISC Cloncurry Shire Council	
	DASC Doomadgee Aboriginal Shire Council	
	FSC Flinders Shire Council	
	HSC Hinchinbrook Shire Council	
	McSC McKinlay Shire Council	
	MoSC Mornington Shire Council	
	MICC Mount Isa City Council	
	PIASC Palm Island Aboriginal Shire Council	
	RSC Richmond Shire Council	
	TCC Townsville City Council	
	Central Queensland (CQ)	BanSC Banana Shire Council
		BarRC Barcaldine Regional Council
BarSC Barcoo Shire Council		
BTRC Blackall-Tambo Regional Council		
BOSC Boulia Shire Council		
CHRC Central Highlands Regional Council		
DSC Diamantina Shire Council		
GSC Gladstone Regional Council		
IRC Isaac Regional Council		
LSC Livingstone Shire Council		
LRC Longreach Regional Council		
MacRC Mackay Regional Council		
RRC Rockhampton Regional Council		
WRC Whitsunday Regional Council		
WSC Winton Shire Council		
WASC Woorabinda Aboriginal Shire Council		
Southern Queensland (SQ)	BaSC Balonne Shire Council	
	BSC Bulloo Shire Council	
	BRC Bundaberg Regional Council	
	CASC Cherbourg Aboriginal Shire Council	
	FCRC Fraser Coast Regional Council	
	GoRC Goondiwindi Regional Council	
	GRC Gympie Regional Council	
	MarRC Maranoa Regional Council	
	MuSC Murweh Shire Council	
	NBRC North Burnett Regional Council	
	PSC Paroo Shire Council	
	QSC Quilpie Shire Council	
	SBRC South Burnett Regional Council	
	SDRC Southern Downs Regional Council	
	ToRC Toowoomba Regional Council	
	WDRC Western Downs Regional Council	
South East Queensland (SEQ)	BCC Brisbane City Council	
	GCCC Gold Coast City Council	
	ICC Ipswich City Council	
	LVRC Lockyer Valley Regional Council	
	LCC Logan City Council	
	MBRC Moreton Bay Regional Council	
	NSC Noosa Shire Council	
	RCC Redland City Council	
	SRRC Scenic Rim Regional Council	
	SRC Somerset Regional Council	
SCRC Sunshine Coast Regional Council		



Disclaimer:
This map has been prepared by the Dept of Community Safety.
Other users must verify that the data is accurate and suitable for their purposes.
The Queensland Reconstruction Authority does not warrant the accuracy or reliability of the data or the use of or reliance on this map.

Local Government Areas and QldRA Reporting Regions

Scale at A4: 1:6,700,000

Legend

- Far North Queensland
- North Queensland
- Central Queensland
- Southern Queensland
- South East Queensland
- Local Government Areas

As at 5/02/2014

© IPOL 2009, 2014. QLDRA Reporting Regions. QLDRA Reporting Regions 2014 Map.

