

QUEENSLAND RECONSTRUCTION AUTHORITY

Monthly Report

February 2014

A decorative graphic in the bottom right corner of the page, consisting of several overlapping, radiating lines in various shades of maroon and red, creating a sense of motion and depth.

Document details:

Security classification	Public
Date of review of security classification	February 2014
Authority	Queensland Reconstruction Authority
Author	Chief Executive Officer
Document status	Final
Version	1.0

Contact for Enquiries:

All enquiries regarding this document should be directed to:

Queensland Reconstruction Authority

*Phone the call centre - **1800 110 841***

Mailing Address

Queensland Reconstruction Authority

PO Box 15428

City East Q 4002

Alternatively, contact the Queensland Reconstruction Authority by emailing info@qldra.org.au

Licence

This material is licensed under a [Creative Commons - Attribution 3.0 Australia licence](#).



The Queensland Reconstruction Authority requests attribution in the following manner:

© The State of Queensland (Queensland Reconstruction Authority) 2011-2014

Information security

This document has been classified using the [Queensland Government Information Security Classification Framework \(QGISC\)](#) as PUBLIC and will be managed according to the requirements of the QGISC.

Message from the Chief Executive Officer

Major General Richard Wilson AO
Chairman
Queensland Reconstruction Authority

Dear Major General Wilson

It is with pleasure that I present the February 2014 Monthly Report – the 36th report to the Board of the Queensland Reconstruction Authority (the Authority).

The Authority was established under the *Queensland Reconstruction Authority Act 2011* following the unprecedented natural disasters which struck Queensland over the summer months of 2010-11. The Authority is charged with managing and coordinating the Government's program of infrastructure renewal and recovery within disaster-affected communities, with a focus on working with our State and local government partners to deliver best practice expenditure of public reconstruction funds.

Following the widespread damage caused by ex-Tropical Cyclone Oswald in early 2013, the jurisdiction of the Authority was expanded by the *Queensland Reconstruction Authority Amendment Bill 2013* to cover this and other disaster events which occurred in the 2013 disaster event period, provide the Authority with a stronger focus on community resilience and extend the term of the Authority until 30 June 2015.

2014 has started with a rolling series of reminders that the Queensland is in the midst of its annual 'disaster season' with a number of tropical cyclones threatening the State. Whilst the State has been spared from major damage, sufficient impacts were felt in the north of the State to cause activations for Natural Disaster Relief and Recovery Arrangements (NDRRA) relief measures for both Tropical Cyclone Dylan and Tropical Cyclone Fletcher.

The Authority continues to monitor the progress of reconstruction and provide the resourcing and support necessary to build the momentum of reconstruction and enhance the resilience of communities for potential disasters. Whilst remaining prepared to respond to potential events in this current disaster season and maintaining focus on the entire program, the Authority's current priorities are on progressing the remaining program of works from the 2011 and 2012 disaster periods, progress the 2013 event works into delivery and close out the completed works for the 2010 disaster period.

The February report provides an update on the progress of the \$13.96 billion program of works managed by the Authority. As at 3 February 2014:

- an additional \$320 million in submissions have been received by the Authority since last month
- an additional \$464 million has been processed by the Authority since last month
- a cumulative value of \$10.44 billion of the \$13.96 billion works program has been reported to the Authority as being in progress or delivered by delivery agents as at 31 December 2013.

In addition, the report provides a separate update on the Betterment fund. As at 31 January 2014, the majority of the \$80 million Betterment Fund has now been allocated with 220 projects approved with a Betterment component of \$78.5 million. Of these, three projects were approved during January and the report profiles one of these recent approvals for Moreton Bay Regional Council - Bongaree Seawall. The report also notes the progress of betterment projects which have moved into the delivery phase.

I commend the report to you and recommend its release to the Minister and the public pursuant to Section 41 of the *Queensland Reconstruction Authority Act 2011*.

Yours sincerely



Graeme Newton
Chief Executive Officer
Queensland Reconstruction Authority

Contents

1.0 Introduction	1
1.1 Background	2
1.2 Purpose	2
1.3 Timing	2
2.0 Disaster Assistance	3
2.1 Queensland Disaster Assistance Framework	4
2.2 Disaster assistance by event period	5
2.3 Events managed by the Authority	6
2.4 Additional assistance measures	7
2.4.1 Betterment fund	7
2.4.2 Other assistance measures	7
3.0 Program Status	8
3.1 Recent developments	9
3.2 Combined program status	9
3.3 Looking forward	9
3.4 State-wide pipeline of works	10
3.5 Program of works expenditure	11
3.6 State-controlled roads and highways	12
3.7 Betterment fund status	14
4.0 Progress Reports	16
4.1 Iconic projects in reconstructing Queensland	17
4.2 Spotlight on completed works	20
5.0 Communications	22
5.1 Communicating progress	23
5.2 Media reports	24
<u>Appendices</u>	
Appendix A: Local Government Areas by Region	26

Section one:
Introduction



1.0 Introduction

1.1 Background

Queensland has been struck by a series of unprecedented natural disasters in recent years. Between November 2010 and April 2011, extensive flooding caused by periods of extremely heavy rainfall, destruction caused by a number of storm cells including Cyclones Tasha, Anthony and Severe Tropical Cyclone Yasi and subsequent monsoonal flooding, resulted in all of Queensland being declared as disaster affected.

On 21 February 2011 in response to the 2011 disaster events, the Queensland Government established the Queensland Reconstruction Authority (the Authority) under the *Queensland Reconstruction Act 2011*. The Authority's role was subsequently extended to cover historical and continuing disaster events in Queensland and, on 26 September 2012, the State Government announced the initial extension of the term of the Authority's operations to June 2014.

The Authority has since been given responsibility to administer Natural Disaster Relief and Recovery Arrangements (NDRRA) for the large scale natural disaster caused by Tropical Cyclone Oswald in late January 2013 and additional events which have occurred in the 2013 disaster event period. The *Queensland Reconstruction Authority Amendment Bill 2013* was passed on 14 February 2013 to expand the jurisdiction of the Authority to include these recent events, provide the Authority with a stronger focus on community resilience and extend the term of the Authority to 30 June 2015.

1.2 Purpose

The Authority's mission is **to reconnect, rebuild and improve Queensland communities and its economy**.

The Authority is charged with managing and coordinating the Government's program of infrastructure renewal and recovery within disaster-affected communities, with a focus on working with our State and local government partners to deliver best practice expenditure of public reconstruction funds.

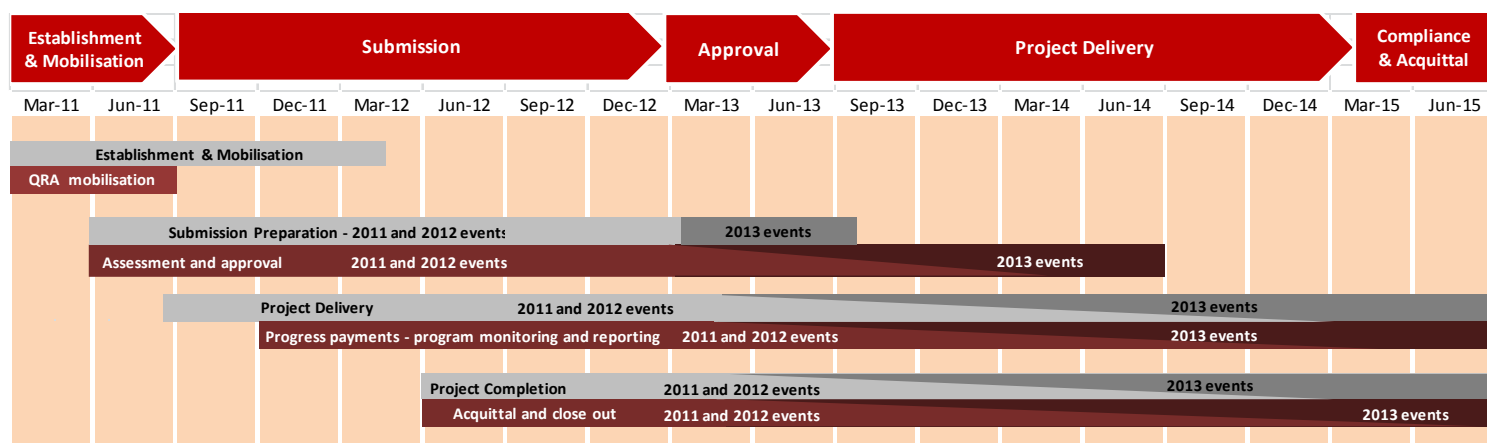
The Authority operates with reference to recovery and reconstruction plans established by the State in response to the 2011 disaster events and more recently following Tropical Cyclone Oswald. The Queensland 2013 Flood Recovery Plan (Recovery Plan), approved on 25 February 2013, provides strategic guidance for the coordination and management of recovery, reconstruction and community resilience activities undertaken across the State after Tropical Cyclone Oswald.

Five functional recovery groups have been established under the Recovery Plan to manage and coordinate recovery initiatives across impacted regions. The Authority provides support to, and reports on progress of the groups against their key tasks with decentralised responsibility for delivery across responsible agencies for each functional recovery group. The functional recovery groups follow from the lines of reconstruction established following the 2011 disaster events, the key tasks of which are now substantially complete.

1.3 Timing

The Authority's priorities are currently assisting councils and State agencies to progress their remaining program of works from the 2011 and 2012 disaster periods, with the bulk of the reconstruction work occurring prior to June 2014. Concurrently, the Authority is focused on accelerating the submission and application approval process for the 2013 events to facilitate the 2013 program of works into project delivery phase as soon as practicable.

With the period to deliver works for the 2010 disaster period now complete (at 30 June 2013), the Authority is assisting delivery agents with the reporting of final expenditure and close out of the completed program of works for 2010 events.



Section two:
Disaster Assistance

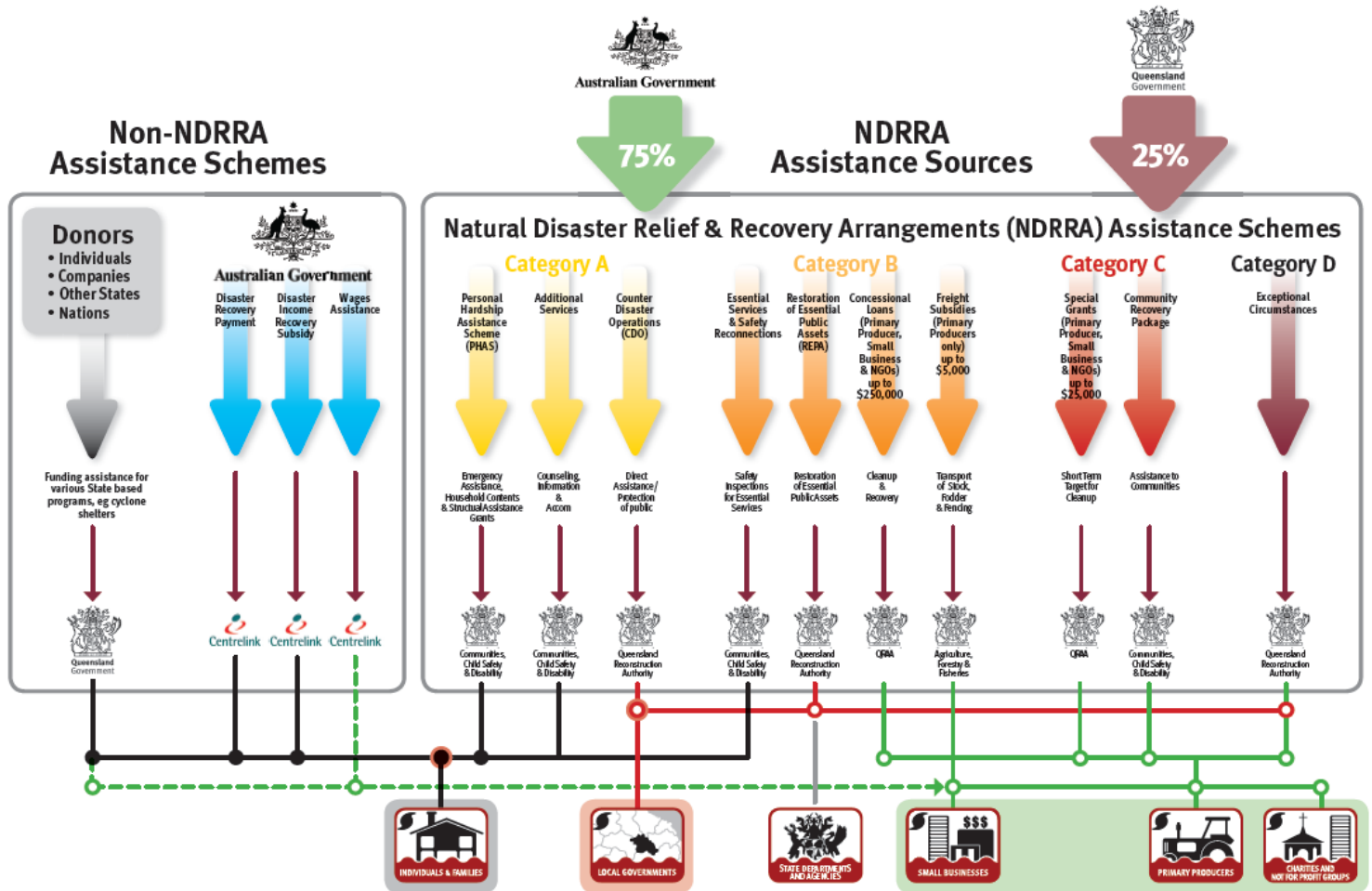


2.0 Disaster Assistance

2.1 Queensland Disaster Assistance Framework

The available Queensland Disaster Assistance schemes are separated between NDRRA (jointly funded by the Commonwealth and State governments) and Non-NDRRA funding schemes. The diagram below indicates the different elements of assistance available and how each element operates.

Figure 2.1.1 Queensland Disaster Assistance Framework



Whilst elements of the assistance schemes are delivered by other State agencies, all of the NDRRA assistance sources (and elements of the non-NDRRA assistance schemes) are administered by the Authority for historical and continuing disaster events in Queensland.

Disaster events managed by the Authority

The list of the activated disaster events managed by the Authority are set out in **Section 2.3** and can also be found on www.disaster.qld.gov.au.

The maps opposite show the LGAs activated for relief measures under NDRRA for each event period under the Queensland Disaster Assistance Framework.

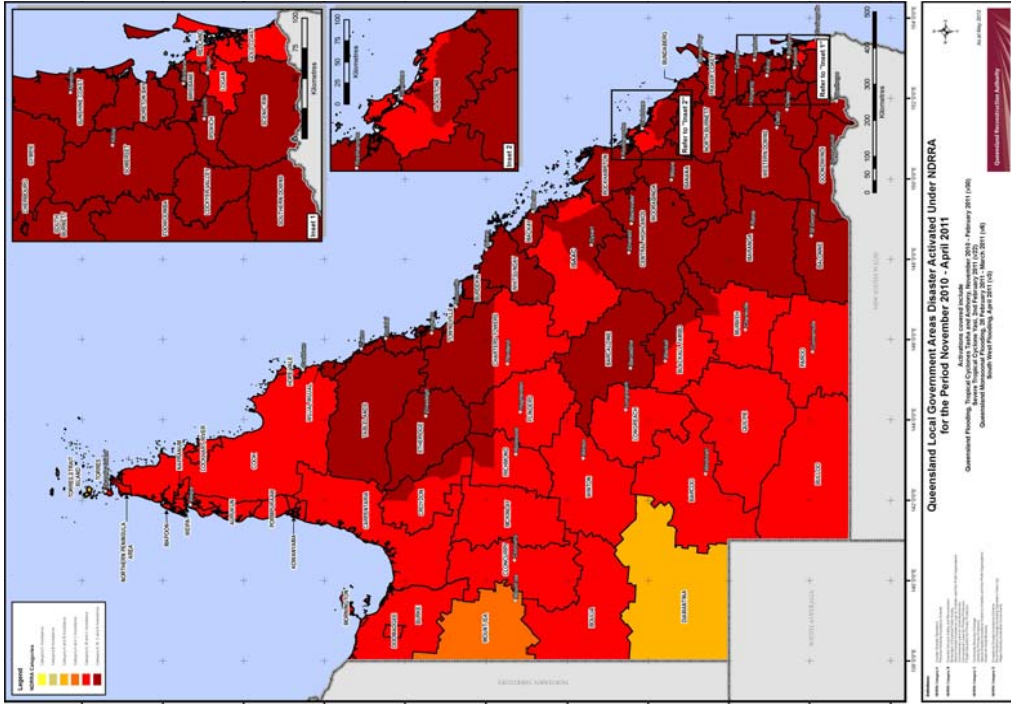
This report includes references to event periods described as follows:

- **2014 events:** Activated disaster events managed by the Authority which occurred in the financial year ended **30 June 2014**
- **2013 events:** Activated disaster events managed by the Authority which occurred in the financial year ended **30 June 2013**, including Tropical Cyclone Oswald and associated rainfall and flooding (January 2013)
- **2012 events:** Activated disaster events managed by the Authority which occurred in the financial year ended **30 June 2012**
- **2011 events:** Activated disaster events managed by the Authority which occurred in the financial year ended **30 June 2011**, including Tropical Cyclone Yasi and Queensland flooding (November 2010 to February 2011)
- **2009-2010 events:** Activated disaster events managed by the Authority which occurred prior to 30 June 2010
- **Combined Program:** relates to all the activated disaster event programs managed by the Authority.

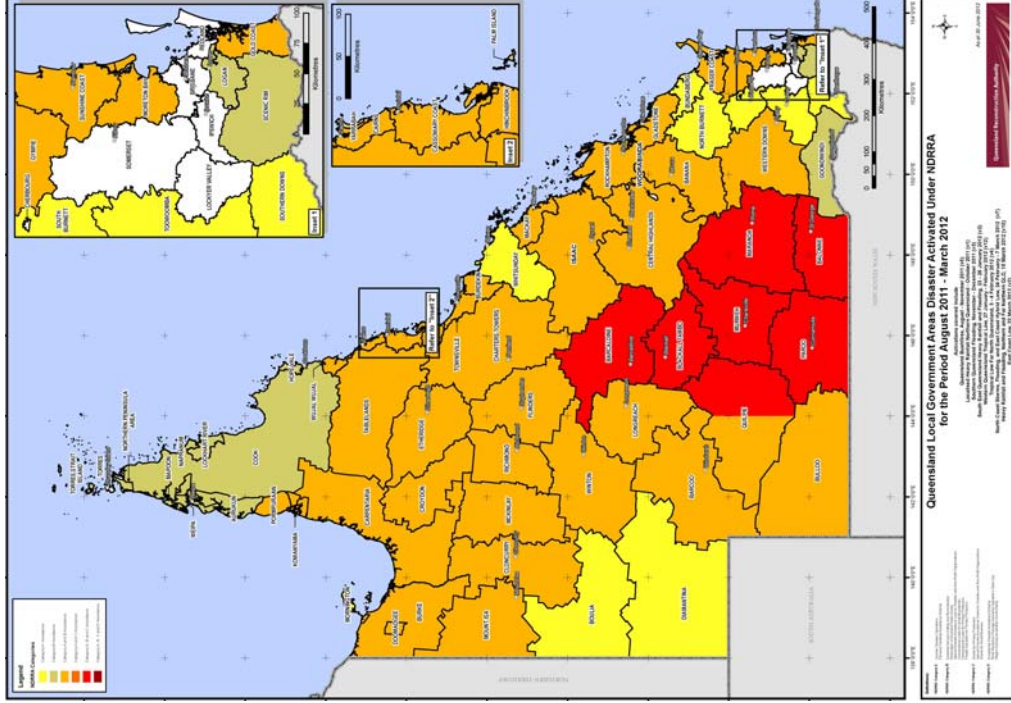
2.2 Disaster assistance by event period

The maps below show the LGAs activated for relief measures under NDRRA for each event period managed by the Authority under the Queensland Disaster Assistance Framework.

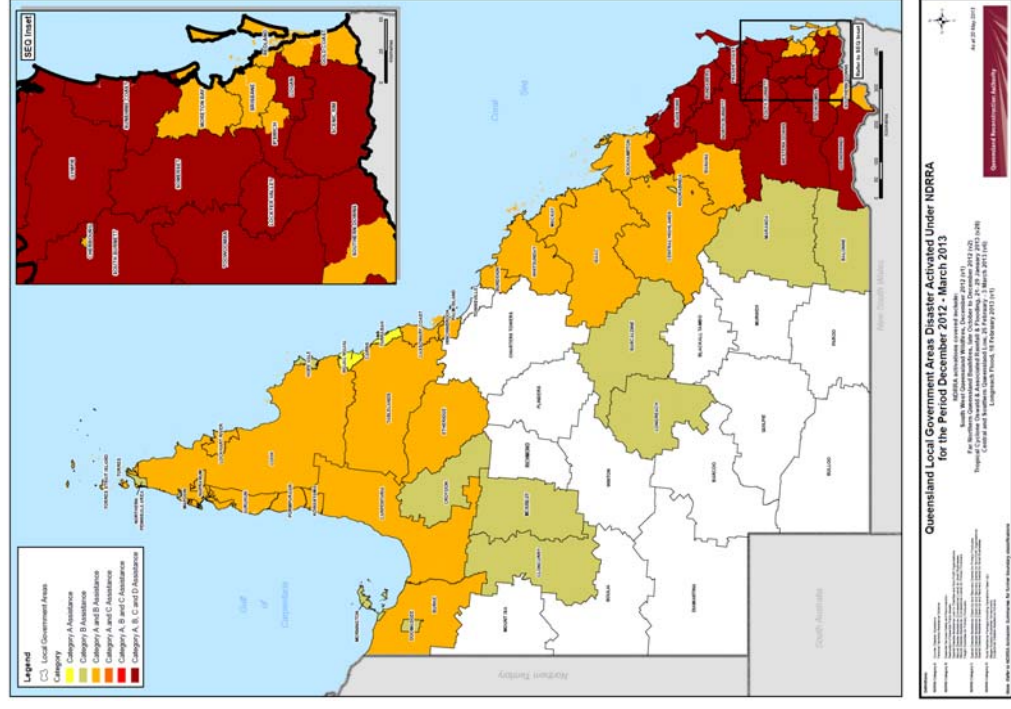
Map 1 - LGAs disaster activated under NDRRA for 2011 events



Map 2 - LGAs disaster activated under NDRRA for 2012 events



Map 3 - LGAs disaster activated under NDRRA for 2013 events



* Different funding periods exist for each Category type.

2.3 Events managed by the Authority

The Authority has responsibility to administer NDRRA relief measures for historical and continuing disaster events in Queensland. The Authority currently manages and coordinates the infrastructure reconstruction and recovery for 18 disaster events activated for NDRRA relief measures since the Authority's establishment in February 2011 and the remaining program of works for an additional 16 disaster events which occurred prior to the Authority's establishment.

Since the last report, there have been two new disaster event activations for NDRRA financial assistance - Tropical Cyclone Dylan, 31 January 2014; and Tropical Cyclone Fletcher, commencing 2 February 2014.

2014 events:

- Tropical Cyclone Fletcher, commencing 2 February 2014
- Tropical Cyclone Dylan, 31 January 2014
- North Stradbroke Island Fires commencing 29 December 2013

2013 events:

- South West Queensland Wildfires, 21 December 2012
- Far Northern Queensland Bushfires, late October - December 2012
- Tropical Cyclone Oswald and Associated Rainfall and Flooding, 21-29 January 2013 *
- Longreach Flood, 18 February 2013 #
- Central and Southern Queensland Low, 25 February - 5 March 2013 #

2012 events:

- Queensland Bushfires, August to October 2011
- Localised Heavy Rainfall Northern Queensland, October 2011 *
- Southern Queensland Flooding, November to December 2011 *
- South East Queensland Heavy Rainfall and flooding, 23- 26 January 2012 *
- Western Queensland Tropical Low, 27 January to February 2012 *
- Far Northern Queensland Tropical Low, 3-4 February 2012 *
- North Coast Queensland Storms and flooding and East Coast Hybrid Low, 24 February - 7 March 2012 *
- Northern and Far Northern Queensland Heavy Rainfall & flooding, 15 March 2012 *
- East Coast Low, 22 March 2012 *

2011 events:

- Queensland Flooding and Tropical Cyclones Tasha and Anthony, November 2010 to February 2011*
- Severe Tropical Cyclone Yasi on 2 February 2011*
- Queensland Monsoonal Flooding Event, 8 February 2011*
- South West Flooding, April 2011*

2007-2010 natural disaster events managed by the Authority that have open submissions for damage:

- South East and North Coast Queensland East Coast Low, August 2007
- South West Queensland storms and flooding, 23-30 November 2007
- Central Western Queensland storms and flooding, 22-30 December 2007
- South East Queensland East Coast Low, 27 December 2007 - 7 January 2008
- Queensland Monsoonal flooding, January 2008
- Queensland Monsoonal flooding, February March 2008
- South West Queensland flooding, June 2008
- Queensland storms and associated flooding, 16-22 November 2008
- Queensland Monsoonal flooding and Tropical Cyclone Charlotte and Ellie, January - February 2009
- South East Queensland Low, May 2009
- Queensland Bushfires, September – October 2009
- South West Flooding, 20 – 25 November 2009
- Northern, Central and South West Queensland Flooding, 22 December 2009 to 8 January 2010
- Queensland Monsoonal Flooding and Tropical Cyclones Olga, Neville, Ului and Paul, January to April 2010
- South West Queensland Low and Associated Flooding, September 2010
- 2010 South East Queensland Flooding, 9-12 October 2010.

The maps opposite show the LGAs activated for relief measures under NDRRA for each event period managed by the Authority under the Queensland Disaster Assistance Framework.

* Events covered under the National Partnership Agreement for Natural Disaster Recovery and Reconstruction (NPA) between the State and Commonwealth Government signed 8 February 2013 (NPA Events).

Pending agreement to extend the NPA to include two additional 2013 events - Longreach Floods, 18 February 2013 and Central and Southern Queensland Low, 25 February - 5 March 2013.

2.4 Additional assistance measures

The State Government in conjunction with the Commonwealth have activated a range of jointly-funded Category C, Category D and other relief measures to alleviate distress due to the impact of Tropical Cyclone Oswald and the 2011 events. The measures are summarised below:

2.4.1 Betterment fund

On 8 February 2013, the Queensland Government signed the National Partnership Agreement (NPA) with the Commonwealth Government which recognised the need for a more streamlined process for the approval of Betterment funding. The Queensland Government announced a \$40 million commitment to Betterment funding which will match the Commonwealth Government contribution, resulting in the establishment of the \$80 million Betterment Fund.

In August 2013, the Betterment fund was extended beyond its original coverage of LGAs declared for NDRRA assistance for Tropical Cyclone Oswald to also cover LGAs declared for the two additional disaster events that occurred through to June 2013 (Longreach Flood (18 February 2013) and Central and Southern Queensland Low (25 February to 5 March 2013)). The Betterment fund is available for the restoration or replacement of essential public assets to a more disaster resilient standard than their pre-disaster standard. The intent of betterment is to increase the resilience of communities to natural disasters, while at the same time reducing future expenditure on asset restoration, reducing incidents, injuries and fatalities and improving asset utility during and after disaster events.

Where a damaged asset is approved as a betterment project, the normal cost of restoring or replacing the asset to its pre-disaster standard will continue to be funded under Category B of NDRRA assistance and the incremental cost to 'better' the asset to a more disaster-resilient standard will be financed from the Betterment fund. The status of the Betterment fund and profiles of recent approved Betterment projects is set out in Section 3.7 of this report.

2.4.2 Other assistance measures

Tropical Cyclone Oswald

- **Community Recovery Package - \$5 million** - Funding for community development officers in the hardest hit communities of Bundaberg and North Burnett, support for mental health services and a flexible fund that assists communities to implement engagement and development activities.
- **Clean Up and Recovery program - \$10 million** - Program to assist primary producers to clear debris and restore fencing in the worst affected areas; to maintain workers while income generating activities are reduced and to clear debris from watercourse that poses a hazard to downstream infrastructure and activities.
- **Industry Recovery Officers - \$1.5 million** - Placement of Industry Recovery Officers to assist business and primary producers recover from flooding.
- **Enhanced concessional loans and grants** - Loans of up to \$650,000 (with a grant component of up to \$50,000) are available to applicants that have suffered extreme damage such that the existing concessional loan and recovery grants under NDRRA category B and C are insufficient to support recovery.
- **Environmental Recovery program - \$10 million*** - Program to fund existing programs to conduct flood specific clean up and soil conservation work following the 2013 flooding.
- **Rural Financial Counselling Services - \$1.5 million*** - Provision of financial planning advice for rural businesses and primary producers to assist in the recovery of local economies following the disaster.
- **Other measures - \$4.9 million** to fund dredging works to restore Bundaberg Port to its pre-2013 flood clearance depths; and **\$900,000** to assist Bundaberg Regional Council meet the cost of recovery works for community parks and gardens.

2011 events

- **Queensland Local Council Package - \$315 million** - Funding to help local councils repair utilities and infrastructure, and support their efforts in recovering from the floods and Cyclone Yasi. The package comprises two components: \$265 million to fast-track the repair of damaged infrastructure, including the Strengthening Grantham project, Brisbane ferry terminals and Riverwalk; and \$50 million to contribute to regional and remote councils employing people to perform important clean-up and repair work.
- **Cassowary Coast Support Package - \$15 million** - Funding to restore vital council infrastructure and restore natural vegetation and beach damage in the Cassowary Coast region. Specifically, the Support Package provides for the repair of Dunk Island Jetty, the repair of Clump Point Jetty and the restoration of Cardwell beach foreshore and its natural vegetation.
- **Exceptional Disaster Assistance Scheme** - Concessional interest loans of up to \$650,000, with grant component of up to \$50,000, to eligible businesses, primary producers and not-for-profit organisations that suffered extreme damage.

In addition, the State Government and Commonwealth have agreed to an extended Day Labour Trial, which enables councils to deliver restoration works with their own workforce on condition that they provide evidence of savings in both time and cost.

* Non-NDRRA measures funded 50% by the State and 50% by the Commonwealth; Commonwealth share is being delivered directly through existing Commonwealth programs.

Section three:

Program Status



3.0 Program Status

3.1 Recent developments

Since the last report, there has been a new disaster event activation declared for NDRRA financial assistance, North Stradbroke Island Fires commencing 29 December 2013. Ministerial Declaration has also been granted in relation to this event.

With a deadline of 30 June 2013 for delivery agents to incur NDRRA-eligible expenditure on works arising from the 2010 disaster period, the Authority was active in the period leading up to this date assisting delivery agents with residual 2010 works complete their programs. With this period now passed, delivery agents are focused on delivery of the remaining program of works.

3.2 Combined program status

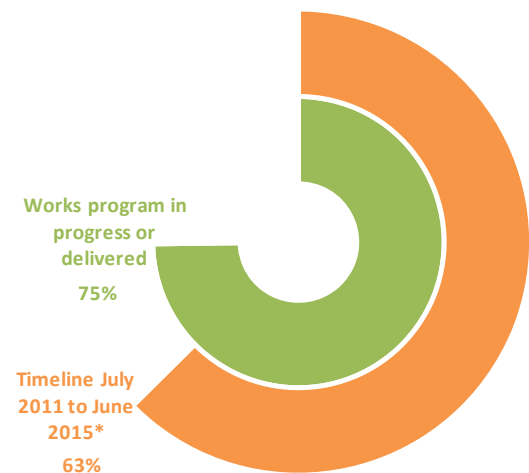
Following completion of the Authority's regular quarterly review process at September 2013, the program of works for all events actively managed by the Authority (2009 to 2013) is estimated to be \$13.96 billion.

The estimated cost of the damage from the 2013 events is more than \$2.4 billion and the cost of the 2011 and 2012 events are estimated to be \$6.9 billion and \$1.9 billion respectively. Ahead of reporting of final expenditure and close out of the relevant programs, the final cost of works for the 2009 and 2010 events managed by the Authority is estimated to be \$2.7 billion.

Since the last report, the combined program of works for all events managed by the Authority has progressed as follows:

- a cumulative value of \$16.2 billion in submissions have been received by the Authority to 3 February 2014, representing an increase of \$320 million since last month
- a cumulative total of \$14.4 billion has been processed by the Authority to 3 February 2014, representing an increase of \$464 million since last month
- a cumulative value of \$10.44 billion of the \$13.96 billion works program has been reported to the Authority as being in progress or delivered by delivery agents as at 31 December 2013.

Figure 3.2.1 Combined program progress



3.3 Looking forward

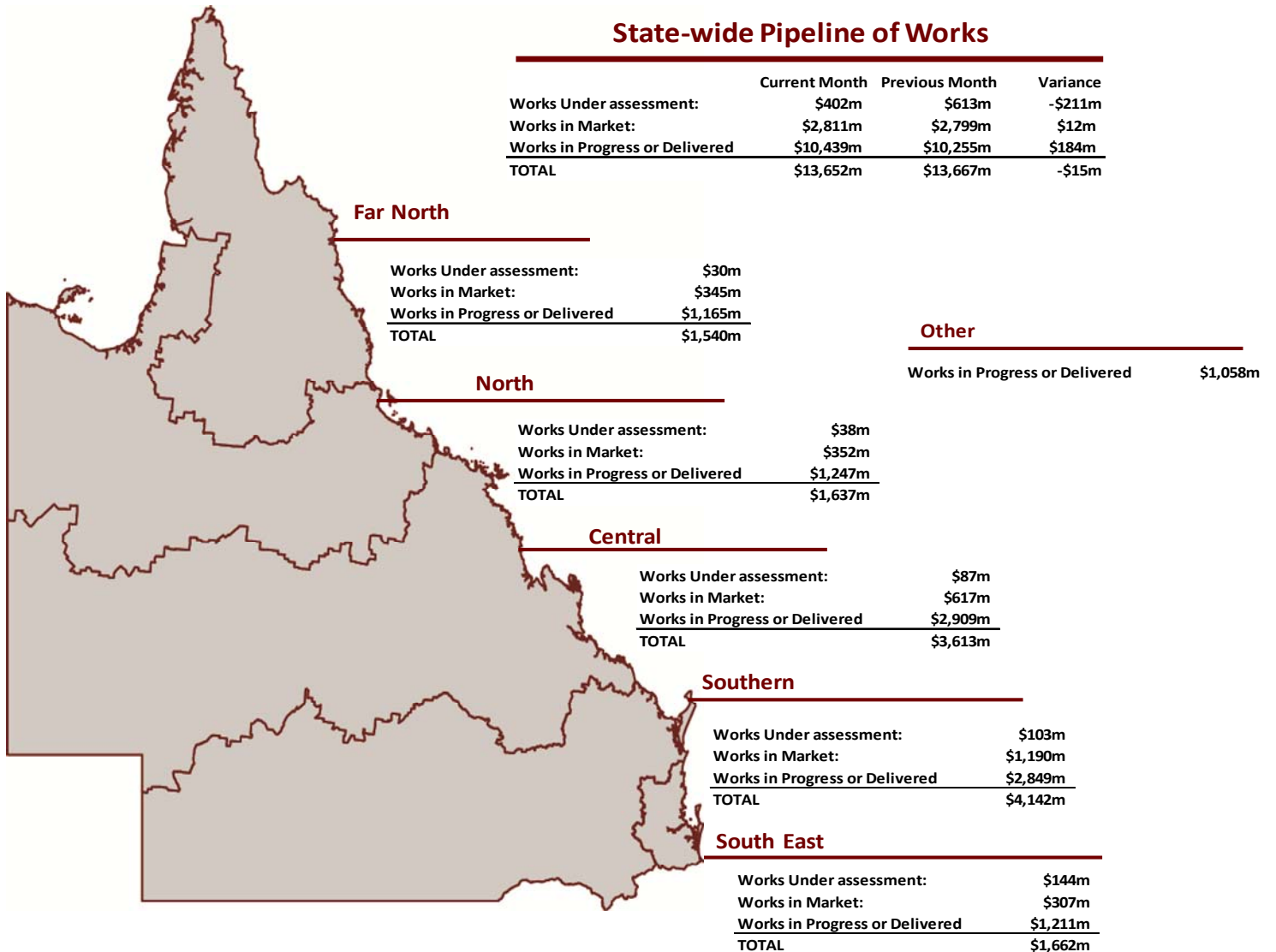
The Authority's priorities are focused on assisting councils and State agencies to progress their remaining program of works from the 2011 and 2012 disaster periods, with the bulk of the reconstruction work occurring prior to June 2014. Concurrently, the Authority is focused on accelerating the submission and application approval process for the 2013 events to facilitate the 2013 program of works into project delivery phase as soon as practicable.

As the period to deliver works for the 2010 disaster period concluded on 30 June 2013, the Authority is assisting delivery agents with the reporting of final expenditure and close out of the completed program of works for 2010 events.

* Proportion of allowable time passed for delivery of total program since 1 July 2011 (following Authority's establishment) to data reporting date

3.4 State-wide pipeline of works

The Pipeline of works for all events actively managed by the Authority (2009 to 2013) has an estimated program value of \$13.96 billion, the status of which is set out below.



Note:

1. Works Under Assessment and Works in Market represents data as at 31 December 2013 (DTMR) and 3 February 2014 (LGAs and Other). Works in Progress or Delivered represents spend by delivery agents to 31 December 2013 as reported to the Authority at 3 February 2014. Additional works have been conducted but are yet to be reported to the Authority
2. Other encompasses SDAs other than DTMR as well as the 2011 and 2013 Other Assistance.

Pipeline of Works Definitions

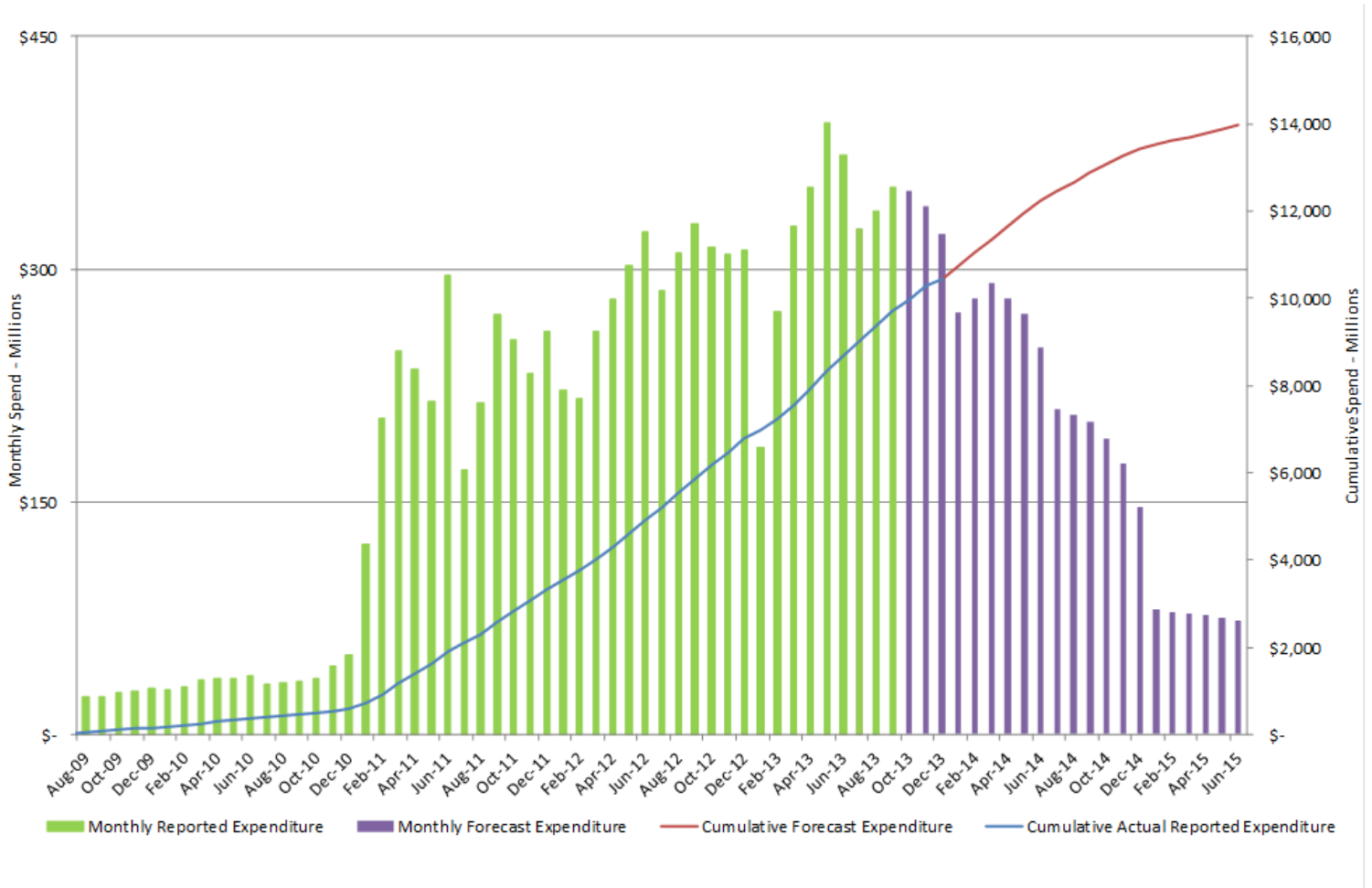
Stage	Description
Works under Assessment	Applications for packages which are currently under assessment by the Authority or are awaiting additional information from the applicant.
Works In Market	Estimate of spend remaining on works in progress and packages which have been approved by the Authority and are in the tender or contract process.
Works in Progress or Delivered	Expenditure as reported to the Authority on packages in progress or delivered.

Source: DTMR at 31 December 2013; and the Authority at 3 February 2014

3.5 Program of works expenditure

The figures below represents the monthly reported expenditure and estimated costs on a combined basis for all events managed by the Authority.

Figure 3.5.1 Combined Program of Works—monthly expenditure



Source: the Authority - cumulative expenditure by delivery agents to 31 December 2013 as reported to the Authority at 3 February 2014; and program estimates per 30 September 2013 NDRRA Review

3.6 State-controlled roads and highways

DTMR's Transport Network Reconstruction Program (TNRP) manages the recovery and reconstruction of Queensland's integrated transport system to reconnect Queensland communities and economies following the damage from natural disaster events in 2010, 2011, 2012 and 2013. The transport system includes state-controlled roads, ports, navigation aids and the rail network.

The current state of activity:

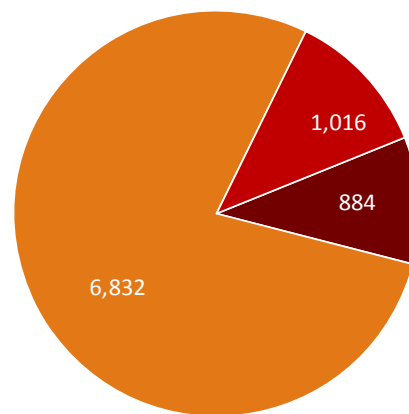
Roads – \$4.7 billion of projects have been completed for both recovery and reconstruction works (excluding maritime infrastructure) for works resulting from the disaster periods of 2010 to 2013 and \$1.5 billion of reconstruction works are currently underway. Of the 8,732km of roads which DTMR plans to reconstruct following damage from these natural disaster events, 6,832km had been reconstructed to 31 December 2013. A further 1,016km of road is under construction on active works contracts. *See Figure 3.6.1 and TNRP Summary map.*

- **Rail** – 3,100km (43%) of Queensland Rail lines were closed or had limited access due to the natural disaster events in early 2013, and all have been recovered and services resumed.
- **Maritime** – repairs have been required to navigation aids, jetties and other boating infrastructure following natural disasters from 2010 to 2013. The events of 2013 affected seven ports (all of which have since been reopened without restriction) and damaged or destroyed 348 aids to navigation, of which 347 have since been recovered and 1 temporarily fixed.

Key achievements:

- During December 2013, DTMR expended approximately \$140 million on reconstruction works across the State arising from natural disaster events between 2011 and 2013. The cumulative spend on reconstruction of the transport network to 31 December 2013 is \$5.3 billion for works resulting from the 2010 to 2013 disaster periods.
- There was 327km of damaged roads reconstructed in December 2013 bringing the total reconstructed since the program commenced to 6,832km of the total damaged.
- Construction commenced on 29 projects valued at more than \$54 million in December 2013 including works on the Bruce Highway in the Fitzroy Region valued at \$12 million; works on Hungerford Road and the Canarvon Highway in the South West; works on the Burke Developmental Road; Flinders and Barkly Highway; and the Wills Developmental Road in the North West.
- Work also commenced on six projects arising from the 2013 natural disaster events on state-controlled roads in the Wide Bay Burnett Region.

Fig.3.6.1 Roads damaged/reconstructed - 2010 to 2013 events



- Roads (km) to be reconstructed - works yet to commence
- Roads reconstructed (km)
- Roads under construction (km)



Above: patching works underway on Bruce Highway, north of Miriam Vale – December 2013

(Source: DTMR 31 December 2013)

Fig.3.6.2 TNRP summary of reconstruction works to date - December 2013

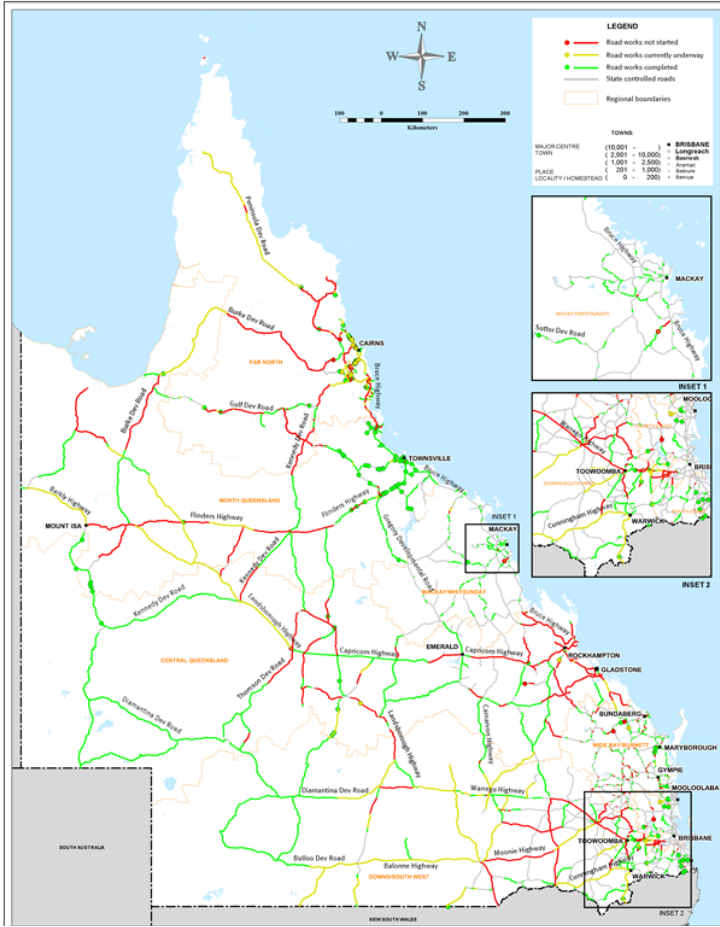
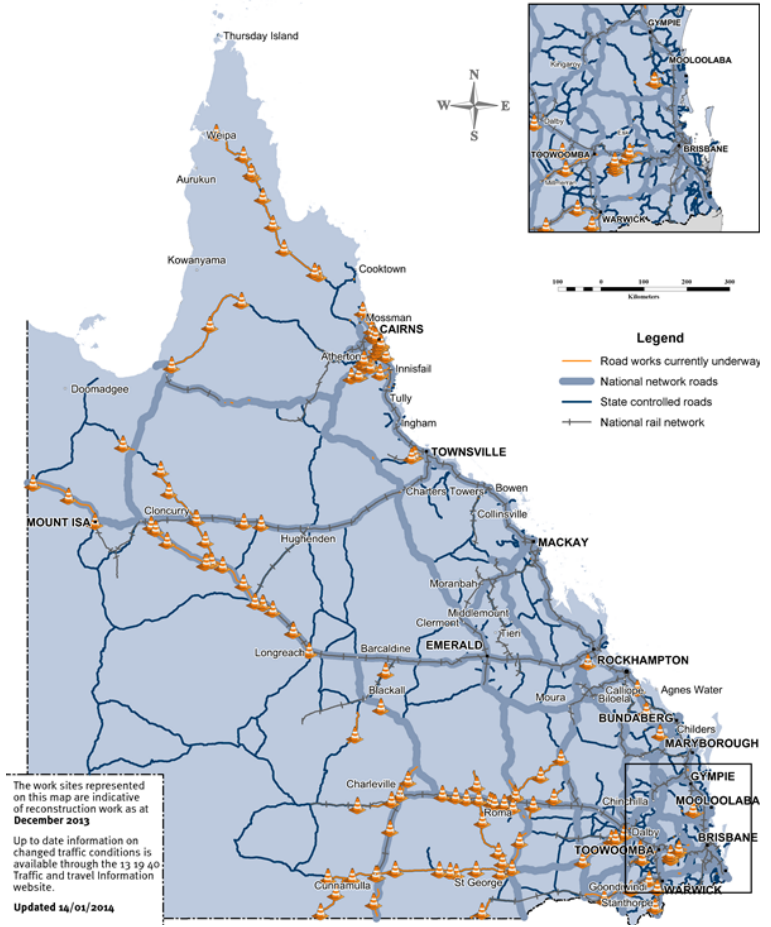


Fig 3.6.3 TNRP reconstruction work sites - December 2013



(Source: DTMR 31 December 2013)

3.7 Betterment fund status

The \$80 million Betterment fund is a Category D relief measure available to LGAs that have been declared for NDRRA assistance for the flood, storm and cyclone disaster events that occurred in Queensland in early 2013 for the restoration or replacement of essential public assets to a more disaster resilient standard than their pre-disaster standard.

Status

The Betterment Fund was announced in February 2013 following Tropical Cyclone Oswald which caused damage to many of the assets which had been repeatedly damaged and restored from earlier disaster events. Correspondence was received from the Commonwealth in August 2013 agreeing to an extension of the Betterment fund to also cover LGAs declared for the two additional disaster events that occurred after Oswald through to June 2013 - Longreach Flood (18 February 2013) and Central and Southern Queensland Low (25 February to 5 March 2013).

Expressions of Interest (EOI) were received by the Authority from 48 councils with approximately \$1 billion worth of Betterment projects to improve the resilience of infrastructure to natural disasters. Under the Betterment Framework, in addition to the normal NDRRA submission assessment process, the Authority considered the financial and non-financial benefits of the betterment proposal such as possible prior damage, loss of availability and its impact on economic or social factors of the community.

The majority of the Betterment Fund has now been allocated to approved projects. As at 31 January 2014, 220 projects with a betterment component have been approved. These projects have an estimated total cost of approximately \$152 million, which includes \$78.5 million in Betterment funding and Council contributions of \$12 million.

Of these, three projects with a Betterment Fund component of \$4.0 million were approved in January 2014 including:

- a project to make Rafting Ground Road, Brookfield, more resilient and immune to flooding. The road is an essential connection for residents and road users to Brisbane's western suburbs and Ipswich (Brisbane City Council)
- restoration and upgrade of the Bongaree Seawall on Bribie Island (Moreton Bay Regional Council)
- replacement of the existing causeway across the Mitchell River on Strathleven Road at Gamboola. The crossing is regularly impacted by floodwater which effectively isolates local communities and cattle stations in the region (Tablelands Regional Council).

A profile of Moreton Bay Regional Council's Bongaree Seawall Betterment project is provided over the page.

To date, works have commenced on a number of approved Betterment projects, including Round Hill Road (Gladstone Regional Council); Gayndah Water Intake plant (North Burnett Regional Council); Margate Foreshore, Pringle Road and Wirth Road (Moreton Bay Regional Council); and One Mile Bridge (Ipswich City Council).

Projects have also commenced in the Bundaberg, Cherbourg, Hinchinbrook, Moreton Bay, South Burnett, North Burnett and Palm Island local government areas.



Top: pavement and guardrail damage at the betterment site on Rafting Ground Road, Brisbane City Council

Centre: Damage to the Mitchell River Crossing on Strathleven Road at Gamboola; Tablelands Regional Council

Bottom: Preliminary works started on the Margate foreshore betterment project - 3 February 2014.

3.7 Betterment fund status (continued)

Feature betterment project: Bongaree Seawall, South Esplanade, Bongaree - Moreton Bay Regional Council

The Bongaree Seawall protects the coastal community of Bongaree on the western side of Bribie Island in Moreton Bay.

The seawall protects a number of essential public assets located immediately adjacent to the foreshore area including underground services, stormwater drainage, pathway lighting, public car parks, a shelter structure and ab-lution block.

Extreme storm surges in January 2013 caused significant erosion of the sand at the base of the wall damaging the foundation and causing the wall to collapse. The damage undermined the adjacent footpath and road, exposing electrical conduits and causing a safety hazard.



The proposed betterment site at Bongaree, Bribie Island

An almost 200 metre section of the wall and pathway suffered subsidence damage and structural collapse and has been closed due to concerns for public safety. An additional near-250 metre section of the wall is considered at high risk of failure.

The betterment works are expected to improve the overall resilience of Bongaree Seawall and provide a stronger, more resilient and uniform structure along the damaged area.

The proposed betterment works include demolishing the existing grouted rock revetment construction and the construction of a stepped concrete seawall in front of the existing shallow skirt, to protect the slab during erosion events. The stepped seawall design will also incorporate vinyl sheet piles at the toe of the wall to reduce the risk of undermining from storm surge and increase the wall's resilience.

Rock from the demolished pre-existing wall will be buried to form additional protection to the toe of the wall and wall drains and barriers will be included in the stepped seawall design allowing free drainage, which will help reduce pressure behind the wall and also reduce the risk of settlement and voids forming beneath the stepped seawall.

The estimated cost of the betterment project for the Bongaree Seawall is \$2.9 million, of which \$450,000 is eligible for NDRRA Category B funding, \$1.9 million is being funded from the Betterment Fund and Council is contributing \$465,000 to the works.



Above: damage to Bongaree Seawall, Bribie Island following storm surges associated with January 2013 disaster event

Section four: Progress Reports



4.1 Iconic projects in reconstructing Queensland*

Project	Value (\$m)	Description	Status
BCC Riverwalk (Cat D)	\$72.0	<p>The Brisbane Riverwalk was a unique pedestrian and bicycle path which linked the city's CBD with the inner suburb of New Farm. It also provided a direct link with tertiary education, entertainment, recreation, commercial, community and residential precincts in the inner city.</p> <p>The floating infrastructure was destroyed by the January 2011 floods and the whole structure was subsequently removed.</p> <p>Following detailed public consultation, the Brisbane City Council decided to replace the previously floating walkway with a fixed, jetty-like 850 metre long structure between New Farm and the CBD. The Riverwalk deck will be approximately 3.4 metres above the average high tide level, high enough to minimise corrosion caused by salt water.</p> <p>The walkway's 37 piles will be anchored into the riverbed, providing the structure with a strong, more flood-resilient foundation. It will feature 24 hour lighting, separate pedestrian and cyclist paths and shaded rest areas. The design also included a rotating opening span to allow for the passage of vessels to and from moorings.</p> <p>Funding for the project is being provided through special (Category D) funding under NDRRA arrangements.</p>	<p>The tender to rebuild the Riverwalk was awarded to the John Holland Construction Group in April 2013.</p> <p>Piling works commenced in late July 2013 with a 55m-long barge mobilised in the Brisbane River carrying a 280-tonne crane and a piling rig.</p> <p>Since works commenced, 13 piles have been poured and 10 concrete girders have been cast on-site at the works compound beneath the Story Bridge. Installation of balustrades on the pre-cast girders and construction of a temporary dock to move completed girders onto barges is ongoing. The barge that will be used to place the pre-cast concrete girders has now arrived on site.</p> <p>Construction of the north abutment at the Howard Smith Wharf end is continuing and preparations are underway for the start of construction of the south abutment at the Merthyr Road end. Other works underway include water quality testing, establishment of survey controls and installation of a concrete pipeline.</p> <p>Completion of the Riverwalk is expected in mid -2014, weather permitting.</p>



Looking down at the pre-cast girders being stored at Howard Smith Wharves



Completed piles on the river



Getting ready to cast one of three special irregularly shaped deck pieces to accommodate the rest area and angles of bends along the zig zag alignment of Riverwalk.



Completed piles showing the future alignment of Riverwalk.



(Courtesy: Brisbane City Council)

* Iconic projects represent projects that may be complex or of great significance to the local community.

4.1 Iconic projects in reconstructing Queensland (continued)

Project	Value (\$m)	Description	Status
Gore Highway, Toowoomba to Millmerran	\$66	<p>The Gore Highway is a vital transport route linking Toowoomba to Goondiwindi and forms part of the National Highway's Melbourne to Brisbane link. The highway provides access for B-double and road trains travelling interstate and also serves as an important link for the diverse agricultural sector in the area.</p> <p>Many sections of the Gore Highway sustained flood damage to pavements and roadside drainage, as well as severe erosion around culverts in the flood events of 2010-2011 and early 2013.</p> <p>The reconstruction works include shoulder reinstatement, pavement repairs and rehabilitation and bitumen resurfacing along sections of the highway between Toowoomba and Millmerran, as well as repairs to culverts and roadside drainage.</p>	<p>FK Gardner and Sons has been contracted to reconstruct on behalf of DTMR. Works to repair the damage commenced in November 2012.</p> <p>Repairs from the 2010-2011 flood events are nearing completion with final seals being laid during January and February.</p> <p>In January 2014, pavement repair works started on damage resulting from the 2013 flood events. These works are being carried out in two key locations on the Gore Highway between Toowoomba and Millmerran - east of Southbrook and east of Millmerran.</p> <p>The project is scheduled for completion in April 2014.</p>
			<p><i>Below: works progressing on Grigor Bridge, January 2014</i></p>
		<p><i>Above: work site on Gore Highway, January 2014</i></p>	
Grigor Bridge, Conondale	\$4.5	<p>Grigor Bridge is a major crossing of the Mary River on the Maleny-Kenilworth Road near Conondale, in the Sunshine Coast hinterland. The original single-lane timber Grigor Bridge was built in 1929 and was extensively damaged during flooding in October 2010 and again in January 2011.</p> <p>The total project comprises \$4.5 million of NDRRA funding representing the estimated cost of replacing the original structure, and more than \$5 million complementary funding for an additional lane and raising the bridge plus embankments and culverts. The complementary works are intended to improve flood immunity, safety and traffic capacity.</p> <p>Construction activity in the river is scheduled to accommodate the breeding cycles of a number of iconic species found in the Mary River including the Mary River Turtle and Mary River Cod.</p>	<p>Construction of the new bridge started in March 2013.</p> <p>All remaining deck kerbs were poured in December 2013, marking completion of concrete works for the new bridge.</p> <p>Dry conditions during January 2014 helped keep the bridge's progress on track. The bridge rail was installed and the asphalt completed on the bridge deck. Pavement and seal works are also underway on both approaches.</p> <p>During January, a survey was also undertaken that confirmed a moderately large population of a small species of insectivorous bats are roosting in the existing timber bridge. Completion of the survey has allowed for identification of strategies to manage the safe relocation of the bats.</p> <p>Weather permitting, the new bridge is expected to be open to traffic in February 2014 with the project, including demolition of the existing bridge, expected to complete by June 2014.</p>

4.1 Iconic projects in reconstructing Queensland (continued)

Project	Value (\$m)	Description	Status
<p>Gayndah Water Supply Intake Station</p> <p>(Cat B and Cat D - Betterment)</p>	<p>\$3.9</p>	<p>The Gayndah Water Supply Intake Station on the Burnett River provides the town's only water supply and supports a population of approximately 2000, as well as local primary industries.</p> <p>The pumping station was rebuilt after being severely damaged in 2011; only to have the new jetty, raw water intakes, pumps and water discharge main destroyed by the floods of early 2013.</p> <p>The pumping station is being rebuilt and improved through a combination of Category B NDRRA funding (for the cost of reconstructing the damaged station), Category D Betterment funding (for the incremental cost of betterment works) and council contribution. The betterment package includes a new submersible-style pumping station, a water intake upstream of the weir and a new raw water main to the water treatment plant.</p> <p>Making this piece of infrastructure more flood resilient will help secure Gayndah's water supply and improve the efficiency and reliability of this important piece of community infrastructure in the case of extreme weather.</p>	<p>Works commenced on the first of two stages of betterment works for the Gayndah Water Supply Intake Station in mid-November 2013. The first stage, being delivered by Doval Constructions Pty Ltd, to install a new main pipeline from the proposed water intake structure at Claude Wharton Weir, was completed in January 2014.</p> <p>Stage two works to construct the pump station at the Claude Wharton Weir have been awarded to Abergeldie Constructions with works expected to commence shortly.</p>
 <p><i>Above: progress of construction works Gayndah Water Supply Intake Station, January 2014</i></p>			
<p>Palm Island Seawall</p>	<p>\$12.3</p>	<p>The Palm Island foreshore provides the focal point for the island's community. It is the location of culturally significant landmarks and memorials as well as the island's community facilities.</p> <p>The seawall in Challenger Bay protects the foreshore and Palm Island coastline through providing wave dissipation and erosion mitigation. Damage to the seawall occurred as a result of Cyclone Yasi in February 2011. The reconstruction project involves reconstruction of 1.3km of seawall.</p>	<p>Following receipt of final development approvals in October 2013, the project commenced in November with the transfer of equipment to site from Townsville and Cairns via barge and construction of the initial 30 metres of seawall completed.</p> <p>To date, 250 metres of the rockwall has completed construction and all 45 concrete piers that will be used in the concrete panel section of the seawall have been cast and painted in Townsville.</p> <p>The first batch of piers are due to arrive on site in early February, with pier drilling to commence shortly after.</p> <p>The works are being delivered by Koppen Developments, a Cairns-based construction company.</p> <p>Completion is expected in mid 2014.</p> <p><i>Left: construction works underway on Palm Island seawall, January 2014</i></p>
			

4.2 Spotlight on completed works



Cassowary Coast Regional Council South Mission Beach Rockwall

The coastal town of Mission Beach, 50kms south of Innisfail in the Cassowary Coast region felt the full brunt of Tropical Cyclone Yasi in February 2011.

Huge sea swells caused widespread destruction to Mission Beach's seafont including damage to the protective rockwall at the southern end of the town that was designed to protect the shoreline and the adjacent esplanade from wild seas.

Large rocks from the wall were displaced and either scattered on the beach or completely washed away. The rocks on the crest of the wall were thrown onto the esplanade. In the post disaster clean up, the full extent of the damage was difficult to determine as a large section of wall was covered by sand pushed up by the cyclone.

Works included the removal of displaced rock from the beach and the esplanade, the replacement of geotextile, filter rock, and armour rock to reinstate the wall's profile, as well as the replenishment of eroded areas behind the crest and at the ends of the wall.

The final cost for the project was approximately \$1.9 million. Council also contributed \$45,000 in complementary funding towards the cost of a new culvert under the adjacent esplanade to increase the rockwall's resilience. Works commenced in April 2013 and were completed in November 2013.

Somerset Regional Council Sunday Creek Bridge

Running from the Kilcoy Murgon Road at Jimna, Sunday Creek Road is a sealed access road that provides the only access for cattle farmers to markets in Kilcoy and Murgon, and for school buses to an environmental education facility on the eastern side of Yabba Creek.

The road and the timber 'spider' bridge across the creek were damaged in 2011, with restoration works completed in early 2012.

In 2013, high velocity floodwaters from the overflowing creek overtopped the bridge and caused damage to the road and the approaches to the bridge. The bridge surface was stripped, with sections of the pavement and previous repairs washed away. The foundations of the structure were severely scoured and exposed, and the centre pier was shifted off its foundations due to the force of the floodwaters. Damage to the bridge was assessed as beyond repair.

Works to restore Sunday Creek Road included the demolition of the damaged timber bridge, the installation of a 33m long single span unibridge, and the restoration of the approaches.

The total cost of repairs was more than \$1 million, with approximately \$820,000 funded through NDRRA funding. Council also contributed \$265,000 in complementary funding towards the purchase of the unibridge, supply of local quarry materials and the installation of guard rails. Works were completed in September 2013.



4.2 Spotlight on completed works (continued)

Gladstone Regional Council Round Hill Road

Gladstone is a major regional city with over 50,000 residents. With two of the world's largest aluminium refineries, Queensland's largest multi commodity port and a number of other major industrial giants, the integrity of Gladstone's regional road network and public infrastructure is of vital importance to Queensland's economy.

Gladstone has suffered from successive natural disasters in 2010, 2011, 2012 and 2013. The region suffered most notably in 2011 from the Queensland floods, and again in 2013 when ex-Tropical Cyclone Oswald drenched the region, causing widespread flooding.

Roads were inundated, cutting off many residents and some communities for significant periods. The damage from these two events alone is estimated at over \$160 million.

One example of works completed in the region is on Round Hill Road, a sealed road providing the only access into the communities of Agnes Water and the Town of 1770, home to more than 2,000 people. Washouts to the road from disaster events can isolate the towns and prevent access for emergency services.

The road was damaged significantly in the flood events of 2011. The reconstruction work included pothole patching, reinstatement of road base, reconstruction of the surface shoulder and application of resurface-spray seal. The works were completed in November 2012 at a cost of \$1.2 million.

Following additional damage on the road in 2013, a Betterment fund project has been approved for Round Hill Road to provide batter protection to prevent the undermining by floodwaters of the road and culvert structures. Construction has commenced on the Betterment project.



Above: damage to Round Hill Road following the 2011 flood event (left and centre); and following reconstruction works (right)



Above: damage to bebo arches culvert structure on Round Hill Road following the 2013 flood event (left); and progress of the works to improve the resilience of the structure, an approved Betterment project

**Section five:
Communications**



5.0 Communications

The Authority is focused on building stakeholder confidence in the reconstruction by ensuring consistent and regular communication of public information.

5.1 Communicating progress

Media analysis

There has been a total of 229 media items from 1 to 31 January 2014 (129 print – 56.3%, 43 TV – 18.7%, 57 radio – 25%), which reached a cumulative audience of over 9.5 million people, with the focus this month being on council recovery; betterment funding; the first anniversary of the 2013 floods; the third anniversary of the 2011 floods and Cyclone Yasi; and preparations for and the impact of Tropical Cyclone Dylan.

January media coverage saw mentions for regions recovering and rebuilding from natural disasters across Queensland, including articles in the Queensland Times, Sunshine Coast Daily, Fassifern Guardian, Fraser Coast Chronicle, Gladstone Observer, Bundaberg Advertiser, Cairns Post, South Burnett Times and the Toowoomba Chronicle, and radio mentions on 4CA Cairns, ABC Wide Bay Bundaberg, 4WK Toowoomba and Radio 4KZ Innisfail.

The Betterment Fund received coverage for projects in Scenic Rim, Ipswich, Moreton Bay, South Burnett, North Burnett, Bundaberg, and Lockyer Valley, with articles appearing in regional media including the Queensland Times, and the Bundaberg News Mail.

Tropical Cyclone Dylan saw national press coverage in The Australian, as well as local press coverage in the Townsville Bulletin, the Cairns Post and the Innisfail Advocate, and TV coverage on ABC News 24 and ABC 1, and radio coverage on ABC North Queensland Townsville and ABC Tropical North Mackay.

Engagement activities

In January 2014, **Minister for Local Government, Community Recovery and Resilience David Crisafulli** visited Lockyer Valley Regional Council announced betterment funding to improve a dangerous floodway at Woodlands Road, Sandy Creek (near Laidley), that has flooded twice in two years and claimed two lives.

The **Minister** and **Authority Chief Executive Officer, Graeme Newton**, also visited Bundaberg on the first anniversary of the floods that inundated parts of the town following Tropical Cyclone Oswald in 2013, attending a civic reception with the Premier and meeting with residents of Bundaberg.

On 31 January, the **Minister** joined the Premier to visit communities in Airlie Beach and Proserpine to inspect damage caused by Tropical Cyclone Dylan.

Communications

There are a number of methods available to the public to communicate with the Authority.

The Authority’s website provides information to the public and continues to be enhanced with ongoing updates, including information about Betterment projects. There have been a large number of visits to the website since it was launched on 18 February 2011.

At 31 January 2014, total website visits amounted to 393,311 - an increase of 2.8% since last month. *(See Figure 5.1.1)*

In January, the Authority received an additional 45 calls to its dedicated hotline and 247 additional pieces of written correspondence were received. *(See Figure 5.1.2)*

Fig. 5.1.1 Website traffic

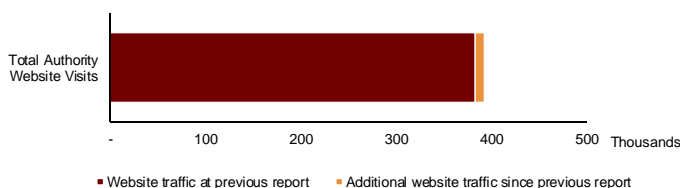
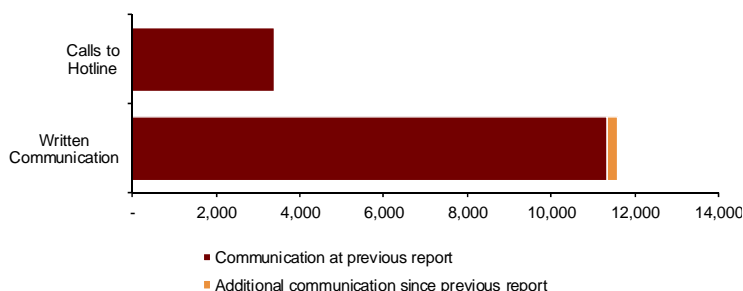


Fig. 5.1.2 Communications



(Source: the Authority at 31 January 2014)

5.2 Media reports

New footbridge for Peak creek

On the first anniversary of the floodwater demolition of the footbridge at Peak Crossing, Council has announced it has received Disaster Relief and Betterment funding to replace and upgrade the structure over Punga Creek.



STORY PAGE 7

Disaster funds for new Peak footbridge

PEAK Crossing residents can look forward to a new pedestrian bridge across Punga Creek by mid-year.

The footbridge was destroyed by floodwaters in the aftermath of ex-Tropical Cyclone Oswald in January 2013. The steel structure buckled under the weight of debris in the fast moving floodwaters.

This week, the Scenic Rim Regional Council awarded a \$474,154 contract for the construction of a replacement footbridge to Dockbridge Constructions. The money for the project comes from the Disaster Relief and Recovery Arrangements, funded jointly by the State and Federal government plus Betterment funding approved through the Queensland Reconstruction Authority.

The replacement crossing is expected to take approximately 18 weeks to build and will be built to comply with current engineering standards.

Cr Duncan McInnes said the replacement footbridge would be welcomed by the Peak Crossing community.

"This project has been the subject of much anticipation in the community. The bridge is an important pedestrian thoroughfare, particularly for children making their way to and from Peak Crossing State School," he said.



Fassifern Guardian, 29 January 2014

Riverside back after flood strikes

Disaster funds return park to former glory

RIVERSIDE Park has undergone a rapid transformation since Ipswich City Council was finally able to secure disaster recovery funding for the project.

Destroyed by the 2013 floods, the ramp and adjoining park at Karilee were the subject of lengthy public consultation in the walk-up, with powerboat users and water skiers initially angered by speculation that council would not be able to secure disaster relief funding to reinstate the boat ramp.

Subsequent discussions nevertheless resulted in the decision to rebuild the park to something resembling what it looked like prior to the floods, with a boat ramp, trailer car parks

and large grassed areas. The new design also incorporates several "pillows" to the eastern side of the ramp, allowing boats to dock safely without having to worry about damaging the hull on the rocky bank.

Work began in November last year, and a council spokesman said a completion date of February 1 was likely.

The new boat ramp is already in place, as are six boat trailer car parks, special load/unload parking bays, several regular car parks, shaded seating and gardens.

Mayor Paul Pissalle said the complex nature of the site required detailed engineering surveys and negotiations with the Queensland Reconstruction Authority (QRA) to fund a "like for like" replacement.

"A number of draft plans were drawn up and we also made a commitment to involve the community with information sessions which were conducted at the beginning of the year," Cr Pissalle said. "There were several hurdles placed in our way before coming up with a concept design that met with approval from State Government agencies and users of the park."

Ipswich City Council was able to secure \$2 million in funding through the Queensland Reconstruction Authority.



ABOVE: RECENT rebuilding of Riverside Park in Karilee is nearing completion after a flood destroyed the park including the boat ramp. RIGHT: Plan of the new work.

Ipswich Advertiser, 29 January 2014

Millions committed to flood-free future in Lockyer

THE Lockyer Valley is set to receive more than \$1.7 million in additional Betterment Funding. Community Recovery and Resilience Minister David Crisafulli said Lockyer Valley Regional Council would receive \$3,709,274 in funding for bridges, footways and culverts with total project value of \$7,072,147.

Mr Crisafulli said the Lockyer Valley had put forward some very good projects which he had selected through the Reconstruction Authority.

"These are key projects Lockyer Valley Regional Council has identified as priorities to improve flood immunity and resilience across the region's road network," Mr Crisafulli said.

He said there were a range of factors that came into the project selection including safety, value for money, economic impact

and how long the community was cut off for.

"I've major projects to benefit from the Betterment Fund will be the works to repair Winsill Connection Rd and Flagsome Creek Rd," he said.

"Council's betterment proposal is to replace the existing footways with larger reinforced concrete box culverts that will increase their flow capacity and extending the approaches to both

footways to increase their flood immunity."

Logan strage on Tennant Creek Rd, Davys Bridge on Smithfield Rd, Staines Bridge on Lake Clarendon Rd and Belford Bridge on All an St in Gatton, will receive upgrades and the footway and culverts on Lockrose Road North will also be upgraded.

These projects bring the total amount of Betterment Funding provided to LVR to more than \$8 million.



These are key projects Lockyer Valley Regional Council has identified as priorities to improve flood immunity...

Bundy flood fund boost

Fix 'em: \$193m to improve roads at Gaeta, Monduran, Wonbah

News.com.au

News.com.au

News.com.au

News.com.au

News.com.au

News.com.au

News.com.au

News.com.au

News.com.au

News.com.au

News.com.au

News.com.au

News.com.au

News.com.au

News.com.au

News.com.au

News.com.au

News.com.au

News.com.au

News.com.au

News.com.au

News.com.au

News.com.au

News.com.au

News.com.au

News.com.au

News.com.au

News.com.au

News.com.au

News.com.au

News.com.au

News.com.au

News.com.au

News.com.au

News.com.au

News.com.au

News.com.au

News.com.au

News.com.au

News.com.au

News.com.au

News.com.au

News.com.au

News.com.au

News.com.au

News.com.au

News.com.au

News.com.au

News.com.au

News.com.au

News.com.au

News.com.au

News.com.au

News.com.au

News.com.au

News.com.au

News.com.au

News.com.au

News.com.au

News.com.au

News.com.au

News.com.au

News.com.au

News.com.au

News.com.au

News.com.au

News.com.au

News.com.au

News.com.au

News.com.au

News.com.au

News.com.au

News.com.au

News.com.au

News.com.au

News.com.au

News.com.au

News.com.au

News.com.au

News.com.au

News.com.au

News.com.au

News.com.au

News.com.au

News.com.au

News.com.au

News.com.au

News.com.au

News.com.au

News.com.au

News.com.au

News.com.au

News.com.au

News.com.au

News.com.au

News.com.au

News.com.au

News.com.au

News.com.au

News.com.au

News.com.au

News.com.au

News.com.au

News.com.au

News.com.au

News.com.au

News.com.au

News.com.au

News.com.au

News.com.au

News.com.au

News.com.au

News.com.au

"But we were determined to see the Bundaberg area..."

"What happened here was a tragedy, but we're determined to get our roads back to normal as quickly as possible..."

"The Bundaberg area is a beautiful one, and we want to see it back to normal as quickly as possible..."

"The Bundaberg area is a beautiful one, and we want to see it back to normal as quickly as possible..."

"The Bundaberg area is a beautiful one, and we want to see it back to normal as quickly as possible..."

"The Bundaberg area is a beautiful one, and we want to see it back to normal as quickly as possible..."

"The Bundaberg area is a beautiful one, and we want to see it back to normal as quickly as possible..."

"The Bundaberg area is a beautiful one, and we want to see it back to normal as quickly as possible..."

"The Bundaberg area is a beautiful one, and we want to see it back to normal as quickly as possible..."

"The Bundaberg area is a beautiful one, and we want to see it back to normal as quickly as possible..."

"The Bundaberg area is a beautiful one, and we want to see it back to normal as quickly as possible..."

"The Bundaberg area is a beautiful one, and we want to see it back to normal as quickly as possible..."

"The Bundaberg area is a beautiful one, and we want to see it back to normal as quickly as possible..."

"The Bundaberg area is a beautiful one, and we want to see it back to normal as quickly as possible..."

"The Bundaberg area is a beautiful one, and we want to see it back to normal as quickly as possible..."

"The Bundaberg area is a beautiful one, and we want to see it back to normal as quickly as possible..."

"The Bundaberg area is a beautiful one, and we want to see it back to normal as quickly as possible..."

"The Bundaberg area is a beautiful one, and we want to see it back to normal as quickly as possible..."

"The Bundaberg area is a beautiful one, and we want to see it back to normal as quickly as possible..."

"The Bundaberg area is a beautiful one, and we want to see it back to normal as quickly as possible..."

"The Bundaberg area is a beautiful one, and we want to see it back to normal as quickly as possible..."

"The Bundaberg area is a beautiful one, and we want to see it back to normal as quickly as possible..."

"The Bundaberg area is a beautiful one, and we want to see it back to normal as quickly as possible..."

"The Bundaberg area is a beautiful one, and we want to see it back to normal as quickly as possible..."

"The Bundaberg area is a beautiful one, and we want to see it back to normal as quickly as possible..."

"The Bundaberg area is a beautiful one, and we want to see it back to normal as quickly as possible..."

"The Bundaberg area is a beautiful one, and we want to see it back to normal as quickly as possible..."

"The Bundaberg area is a beautiful one, and we want to see it back to normal as quickly as possible..."

"The Bundaberg area is a beautiful one, and we want to see it back to normal as quickly as possible..."

"The Bundaberg area is a beautiful one, and we want to see it back to normal as quickly as possible..."

"The Bundaberg area is a beautiful one, and we want to see it back to normal as quickly as possible..."

"The Bundaberg area is a beautiful one, and we want to see it back to normal as quickly as possible..."

"The Bundaberg area is a beautiful one, and we want to see it back to normal as quickly as possible..."

"The Bundaberg area is a beautiful one, and we want to see it back to normal as quickly as possible..."

"The Bundaberg area is a beautiful one, and we want to see it back to normal as quickly as possible..."

"The Bundaberg area is a beautiful one, and we want to see it back to normal as quickly as possible..."

"The Bundaberg area is a beautiful one, and we want to see it back to normal as quickly as possible..."

"The Bundaberg area is a beautiful one, and we want to see it back to normal as quickly as possible..."

"The Bundaberg area is a beautiful one, and we want to see it back to normal as quickly as possible..."

"The Bundaberg area is a beautiful one, and we want to see it back to normal as quickly as possible..."

"The Bundaberg area is a beautiful one, and we want to see it back to normal as quickly as possible..."

"The Bundaberg area is a beautiful one, and we want to see it back to normal as quickly as possible..."

"The Bundaberg area is a beautiful one, and we want to see it back to normal as quickly as possible..."

"The Bundaberg area is a beautiful one, and we want to see it back to normal as quickly as possible..."

"The Bundaberg area is a beautiful one, and we want to see it back to normal as quickly as possible..."

"The Bundaberg area is a beautiful one, and we want to see it back to normal as quickly as possible..."

"The Bundaberg area is a beautiful one, and we want to see it back to normal as quickly as possible..."

"The Bundaberg area is a beautiful one, and we want to see it back to normal as quickly as possible..."

"The Bundaberg area is a beautiful one, and we want to see it back to normal as quickly as possible..."

"The Bundaberg area is a beautiful one, and we want to see it back to normal as quickly as possible..."

"The Bundaberg area is a beautiful one, and we want to see it back to normal as quickly as possible..."

"The Bundaberg area is a beautiful one, and we want to see it back to normal as quickly as possible..."

"The Bundaberg area is a beautiful one, and we want to see it back to normal as quickly as possible..."

"The Bundaberg area is a beautiful one, and we want to see it back to normal as quickly as possible..."

"The Bundaberg area is a beautiful one, and we want to see it back to normal as quickly as possible..."

"The Bundaberg area is a beautiful one, and we want to see it back to normal as quickly as possible..."

Boardwalk damage on the mend

ONE year after the Margate boardwalk copped a beating during the Australia Day long weekend storm it is still out of action.

The fallout from last year's ex-Tropical Cyclone Oswald left a gaping hole in the concrete, and more than 50m of the boardwalk was damaged by strong winds and heavy rain.

In February 2013, a temporary path along the shore between Duffield Rd and Mabel St was constructed and late last year, council received \$2.2 million funding from the Queensland Government betterment fund.

The \$2.7 million project will start in February, with the construction tender awarded to Wincoon.

Last month, councillor Kolina Winchester (Div 6) said 240m of the walkway would be rebuilt.

Redcliffe and Bayside Herald, 29 January 2014

Scenic Rim road repair program in top gear

A ROAD reconstruction project worth almost \$5 million will be delivered by mid-year as Scenic Rim Regional Council's disaster restoration gallops apace.

Finance Committee chairwoman Nadia O'Carroll said Natic Pty Ltd has been awarded a \$1.94 million contract to deliver the construction package, which includes repairing 43 sections of road in central areas of the Scenic Rim.

"This contract is currently undertaking \$5.7 million worth of repairs to 57 sections of road in the worst parts of the Scenic Rim after winning the tender for council's first restoration construction package last November," Cr O'Carroll said.

Scenic Rim Mayor John Burn said the council was making significant inroads into repairing the damage caused by ex-Tropical Cyclone Oswald.

"It has been a year since the disastrous events of the Australia Day long weekend 2013 and I can understand that the community is anxious to see this damage repaired," Cr Burn said.

"Council is rolling out these restoration works at an ever-increasing pace as the necessary approvals and funding from the Queensland Reconstruction Authority are received."

Recovering one bit at a time



WHILE Bundaberg continues to recover from the 2013 floods, it's pleasing to see new injections of funding to repair the region's infrastructure.

Premier Campbell Newman is making a whistle-stop tour through Wide Bay to make various announcements, with the \$1.93 million in Betterment Funding the first cab off the rank.

This time the outer areas in the region are getting the benefit, with Gaeta Rd, Wonbah Rd and Monduran Dam Rd all to receive upgrades.

Gaeta Rd was a priority for Bundaberg Regional Council after the force of the flood waters destroyed the existing roadway structures, leaving residents cut off from emergency services and supplies.

Betterment funding is just that - building it better, not just the same as it was before.

It's not until people are isolated after roads are flooded that they realise just how crucial they are and how important it is for them to be built stronger.

Bundaberg still has a way to go to recover from the floods but, bit by bit, we're getting there.

News Mail Bundaberg, 15 January 2014

Queensland Times, 30 January 2014

Lifting travellers out of harm's way at deadly Sandy Creek

A DEADLY footway across Sandy Creek between Laidley and Gatton will be raised and made more resilient.

Two men died at Sandy Creek on their way to work last January when their cars were washed by floodwaters in separate incidents.

The crossing that also flooded in 2011 will be fixed with state and federal government funding.

State Community Recovery and Resilience Minister David Crisafulli said the government was working with the Lockyer Valley Regional Council to protect communities.

"The Sandy Creek crossing must be improved for the thousands of residents and workers that use the road every day to prevent future loss of life," Mr Crisafulli said.

Local Government Minister Peter Foley said the project was jointly funded by the Australian and Queensland governments, giving those communities the ability to rebuild bigger and better for the long term benefit of all.

Woodlands Rd is an important link between Gatton and Laidley, serving properties and primary producers. It's used by the school bus and is an important evacuation and supply route in times of disaster.

The \$500,000 project will involve the council installing four concrete box culverts and a 40m concrete footway across the creek, raising the road by about a metre.

Lockyer Valley Mayor Steve Jones said the council was focussed on projects which directly helped the community in times of disaster.

"The Betterment Fund, which has been in place since 2011, provides funding for projects like this, which are essential for the long-term resilience of our communities."

Queensland Times, 11 January 2014

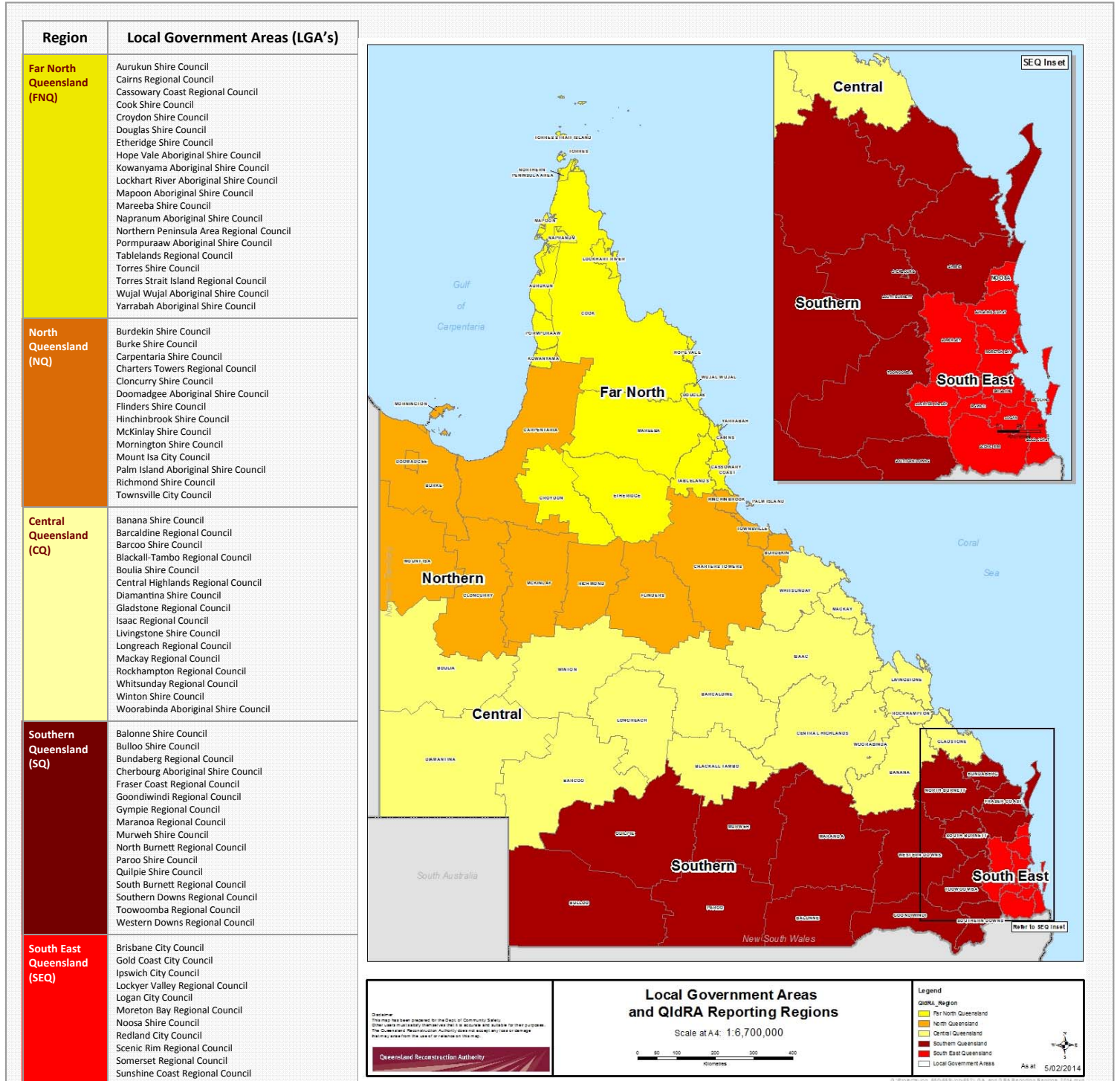


DAVID CRISAFULLI, Community Recovery and Resilience Minister David Crisafulli (left) with Lockyer Valley Regional Council Mayor John Burn (right) at the site of the Sandy Creek crossing that will be fixed by the Betterment Fund.

End in sight as flood-hit areas repair

Appendices

Appendix A: Local Government Areas by Region





This page intentionally left blank

