

QUEENSLAND RECONSTRUCTION AUTHORITY

Monthly Report

November 2015

A decorative graphic in the bottom right corner of the page, consisting of several overlapping, radiating lines in various shades of maroon and red, creating a sense of movement and depth.

Document details:

Security classification	Public
Date of review of security classification	November 2015
Authority	Queensland Reconstruction Authority
Author	Chief Executive Officer
Document status	Final
Version	1.0

Contact for Enquiries:

All enquiries regarding this document should be directed to:

Queensland Reconstruction Authority

*Phone the call centre - **1800 110 841***

Mailing Address

Queensland Reconstruction Authority

PO Box 15428

City East Q 4002

Alternatively, contact the Queensland Reconstruction Authority by emailing info@qldra.org.au

Licence

This material is licensed under a [Creative Commons - Attribution 3.0 Australia licence](#).



The Queensland Reconstruction Authority requests attribution in the following manner:

© The State of Queensland (Queensland Reconstruction Authority) 2011-2015

Information security

This document has been classified using the [Queensland Government Information Security Classification Framework \(QGISCF\)](#) as PUBLIC and will be managed according to the requirements of the QGISCF.

Message from the Chief Executive Officer

Major General Richard Wilson AO (Ret'd)
Chairman
Queensland Reconstruction Authority

Dear Major General Wilson

It is with pleasure that I present the November 2015 Monthly Report – the 57th report to the Board of the Queensland Reconstruction Authority (the Authority).

The Authority was established under the *Queensland Reconstruction Authority Act 2011* (the Act) following the unprecedented natural disasters which struck Queensland over the summer months of 2010-11. The role of the Authority has since been extended a number of times to cover historical and continuing disaster events in Queensland. In June 2015, the Authority's operations were made permanent enabling it to continue the work of helping Queensland communities effectively and efficiently recover from the impacts of natural disasters.

The Authority is charged with managing and coordinating the Government's program of infrastructure renewal and recovery within disaster-affected communities, with a focus on working with our State and local government partners to deliver best practice expenditure of public reconstruction funds.

The Authority is currently assisting delivery agents to progress the 2014 and 2015 events through the damage assessment, submission preparation and approval and delivery phases. The Authority is also focused on gathering and assessing completion documentation to close out the 2013 events and other works completed by 30 June 2015 for acquittal in the next claim due to the Commonwealth in March 2016. Since the last report, the first event of the 2016 disaster season has also occurred with severe storms impacting the Fernvale area in Somerset Regional Council in late October. Following the storm, the Authority has been liaising with Council to assist with recovery efforts and damage assessments.

The November report provides an update on the progress of recovery and is provided following completion of the Authority's September 2015 review of damage estimates. The review is undertaken on a regular basis and involved a complete review of the program of each local government authority (LGA) and State agency for works arising from disaster events managed by the Authority. The review included updated estimates for the 2014 and 2015 events which are currently in the delivery phase, and preliminary final costs for the completed works across the 2011 to 2015 event periods in the acquittal phase.

Following completion of the September 2015 review, the Authority's program of works in delivery (2014 and 2015 events) has been revised to \$833 million. Submissions worth \$612 million have been approved in relation to the delivery program and \$344 million of works have been reported to the Authority at 30 September 2015 as in progress or delivered.

The November report also profiles the success of the Burnett Mary Regional Group in delivering flood recovery programs in the Wide Bay Burnett region as part of the special Category D On-farm Productivity and Riparian Recovery Program to assist primary producers to return to productivity and address impacts to the environment from the flooding from Tropical Cyclone Oswald in 2013. The report also profiles how Cloncurry Shire Council has successfully delivered its 2014 events program ahead of the upcoming wet season and reports on how DTMR is on track with its reconstruction program responding to damage caused by Tropical Cyclone Marcia in early 2015.

As this is my final report as CEO, I wish to express my thanks to the staff and Board of the Authority and the wider group of councils and delivery agents involved in the reconstruction effort for all the support you have provided me. It has been a great opportunity and a privilege to work with such a talented and dedicated team, and I look forward to following the continued success of the organisation.

I commend the report to you and recommend its release to the Minister and the public pursuant to Section 41 of the *Queensland Reconstruction Authority Act 2011*.

Yours sincerely



Frankie Carroll
Chief Executive Officer
Queensland Reconstruction Authority



Contents

1.0 Introduction	1
1.1 Purpose	2
1.2 Timing	2
2.0 Disaster Assistance	3
2.1 Queensland Disaster Assistance Framework	4
2.2 Events and relief measures managed by the Authority	5
2.3 Additional assistance measures	7
3.0 Program Status	8
3.1 Recent developments	9
3.2 Program status	9
3.3 State-controlled roads and highways	10
3.4 Additional assistance measures	11
3.5 Program spotlights	12
4.0 Communications	15
4.1 Communicating progress	16
4.2 Media reports	17
<u>Appendices</u>	
Appendix A: Local Government Areas by Region	19

Section one:
Introduction



1.0 Introduction

1.1 Purpose

The Queensland Reconstruction Authority (the Authority) was established on 21 February 2011 under the *Queensland Reconstruction Act 2011* (the Act) following the extensive series of natural disasters that impacted Queensland over the summer of 2010-11.

The Authority's mission is **to reconnect, rebuild and improve Queensland communities and its economy.**

The Authority is charged with managing and coordinating the Government's program of infrastructure renewal and recovery within disaster-affected communities, with a focus on working with our State and local government partners to deliver best practice expenditure of public reconstruction funds.

Initially established for a two year period, the Authority was extended a number of times as its role expanded to cover historical and continuing disaster events. In June 2015, the Authority was made permanent enabling it to continue the critical work of helping Queensland communities effectively and efficiently recover from the impacts of natural disasters.

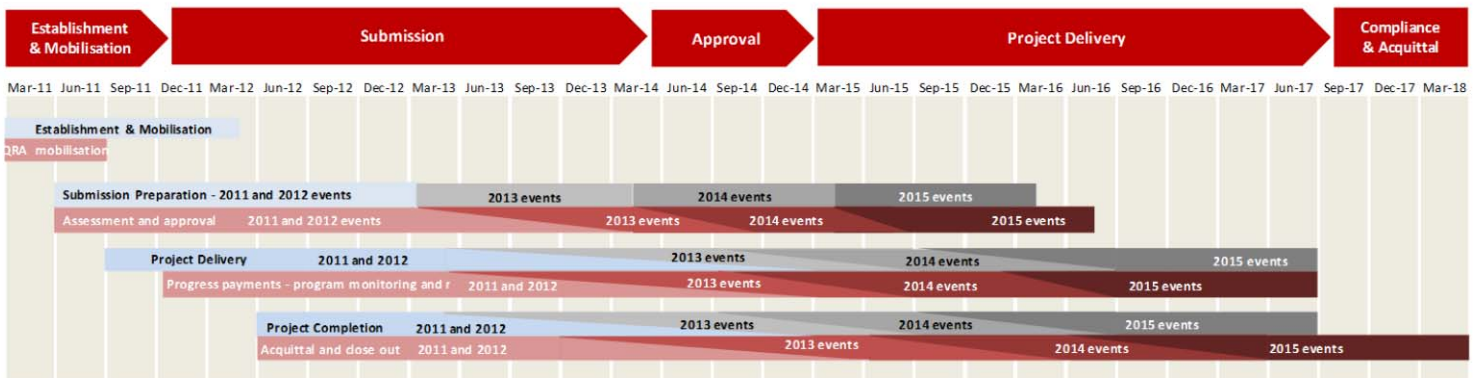
As part of its role, the Authority administers the rebuilding program for Natural Disaster Relief and Recovery Arrangements (NDRRA) activated disaster events and is responsible for the acquittal of NDRRA funding including Counter Disaster Operations, Emergent Works Restoration of Essential Public Assets, Category C and Category D assistance to both State Departments and Agencies and Local Government Authorities. Since its establishment in February 2011, the Authority has managed and coordinated the infrastructure reconstruction and recovery for 50 disaster events activated for NDRRA relief measures.

1.2 Timing

The Commonwealth NDRRA Determination imposes time limits for the delivery and acquittal of works.

The Determination provides for a time limit of two financial years after a disaster to deliver reconstruction works and a further nine months after the end of the financial year in which the works were completed in order to acquit the works. NDRRA funding is formally acquitted through the annual submission of a financial statement to the Commonwealth comprising a compilation of claims for financial assistance in respect of state NDRRA expenditure incurred on eligible disasters in the preceding financial year (Commonwealth Claim). Lodgement of Commonwealth Claims is required to secure reimbursement of the Commonwealth's share of eligible expenditure.

As the Authority is managing a series of events that occurred across a number of financial years, the Authority's program is spread across various stages in the delivery and acquittal phases.



Works for 18 disasters from the 2014 and 2015 event periods are currently in the delivery phase; and completed works from a further 12 events across the 2011 to 2013 event periods are in the acquittal phase.

On this basis, the Authority's operations are currently focused on assisting councils and State agencies to complete their reporting and progress through the close out and acquittal phase of the program of works completed prior to 30 June 2015 for acquittal in the next claim due to the Commonwealth in early 2016. Relevant works include the balance of works from Tropical Cyclone Oswald and other events of 2013 which were due for completion prior to 30 June 2015.

The Authority is also assisting with the damage assessments from the recent 2015 events and progression of works in the delivery phase, that comprises works from the 2014 and 2015 events, through the damage assessment, submission preparation and approval and delivery phases.

Section two:
Disaster Assistance

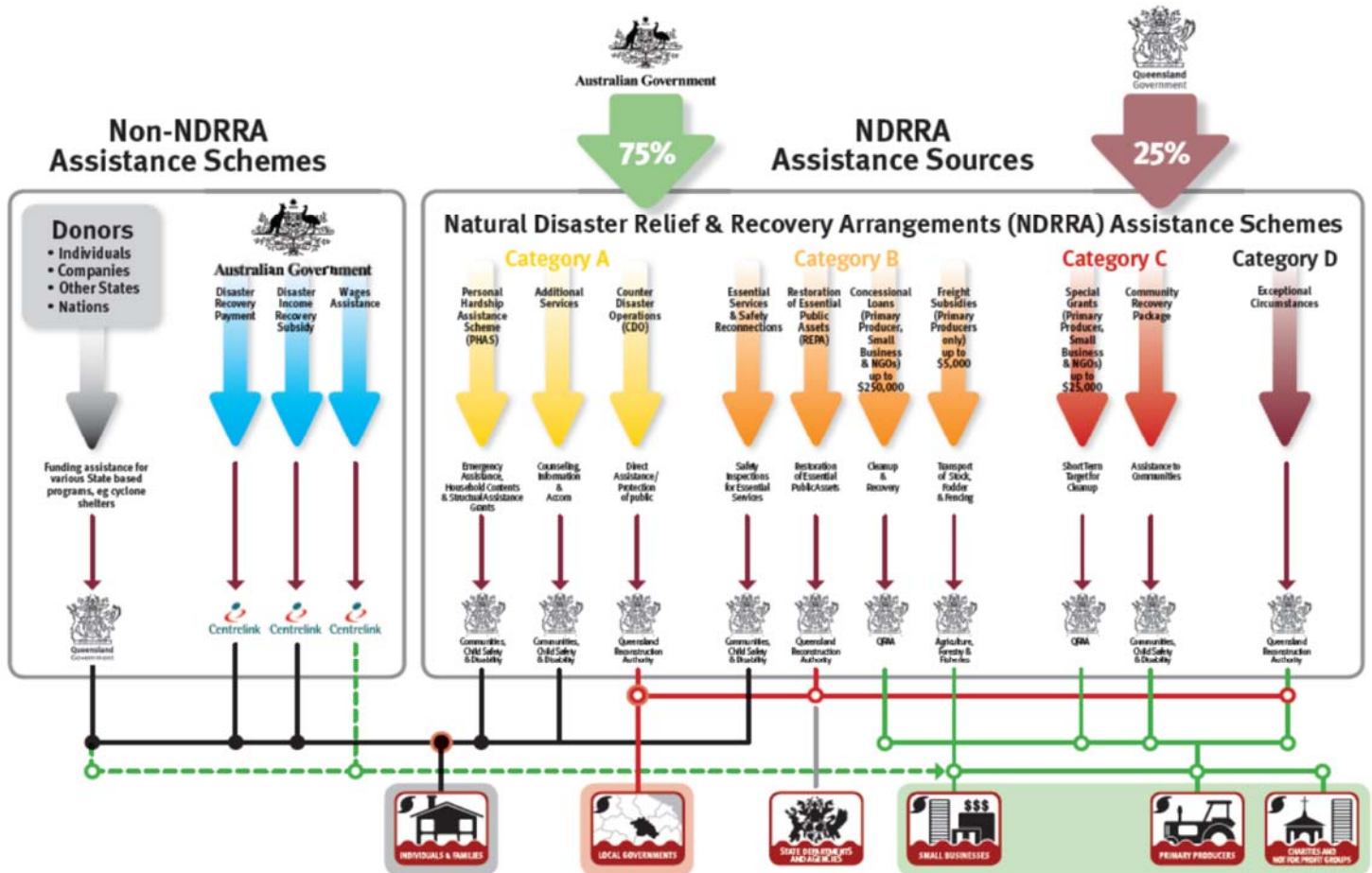


2.0 Disaster Assistance

2.1 Queensland Disaster Assistance Framework

The available Queensland Disaster Assistance schemes are separated between NDRRA (jointly funded by the Commonwealth and State governments) and Non-NDRRA funding schemes. The diagram below indicates the different elements of assistance available and how each element operates.

Figure 2.1.1 Queensland Disaster Assistance Framework



Whilst elements of the assistance schemes are delivered by other State agencies, all of the NDRRA assistance sources (and elements of the non-NDRRA assistance schemes) are administered by the Authority for historical and continuing disaster events in Queensland.

Disaster events managed by the Authority

The list of the activated disaster events managed by the Authority are set out in **Section 2.2** and can also be found on www.disaster.qld.gov.au.

This report includes references to event periods described as follows:

- **2015 events:** Activated disaster events managed by the Authority which occurred in the financial year ended **30 June 2015**
- **2014 events:** Activated disaster events managed by the Authority which occurred in the financial year ended **30 June 2014**
- **2013 events:** Activated disaster events managed by the Authority which occurred in the financial year ended **30 June 2013**, including Tropical Cyclone Oswald and associated rainfall and flooding (January 2013)
- **2012 events:** Activated disaster events managed by the Authority which occurred in the financial year ended **30 June 2012**
- **2011 events:** Activated disaster events managed by the Authority which occurred in the financial year ended **30 June 2011**, including Tropical Cyclone Yasi and Queensland flooding (November 2010 to February 2011).

2.2 Events and relief measures managed by the Authority

The Authority has responsibility to administer NDRRA relief measures for historical and continuing disaster events in Queensland.

Since its establishment in February 2011, the Authority has managed and coordinated the infrastructure reconstruction and recovery for 53 disaster events activated for NDRRA relief measures. Of these, works for 18 disasters from the 2014 and 2015 event periods are currently in the delivery phase¹ and completed works from a further 12 events across the 2011 to 2013 event periods are in the acquittal phase¹.

The maps opposite show the LGAs activated for relief measures under NDRRA for the 2011 to 2015 event periods managed by the Authority².

Since the last report, there have been NDRRA relief measures activated for three events - *Tropical Cyclone Lam, 15-18 February 2015; South East Queensland Low, 30 April-1 May 2015 and Fernvale Severe Storm, 27 October 2015.*

2016 events

(Works to be delivered by 30 June 2018, with final acquittal due by March 2019)

- Fernvale Severe Storm, 27 October 2015.

2015 events

(Works to be delivered by 30 June 2017, with final acquittal due by March 2018)

- South East Queensland Low, 30 April – 1 May 2015
- Tropical Cyclone Nathan and associated rainfall & flooding, 11-15 March 2015
- Severe Tropical Cyclone Marcia and South East Queensland Trough - 19 to 22 February 2015
- Tropical Cyclone Lam, 15-18 February 2015
- North Queensland Severe Weather and Flooding - 8 to 15 February 2015
- Central Eastern Queensland Heavy Rainfall and Flooding - 21 to 29 January 2015
- Western Queensland Heavy Rainfall and Flooding - 5 to 18 January 2015
- Central Queensland Heavy Rainfall and Flooding - 8 to 14 December 2014
- Brisbane Severe Thunderstorm - 27 November 2014.

2014 events

(Works to be delivered by 30 June 2016, with final acquittal due by March 2017)

- Tropical Cyclone Ita & Associated Rainfall & Flooding, 11-14 April 2014
- Tropical Cyclone Gillian - 10 to 11 March 2014
- Central Coast & Southern Queensland Trough, 26-30 March 2014
- Central & Western Queensland Flooding & Rainfall, 18-28 February 2014
- North East Queensland Monsoonal Rainfall & Flooding - 7 to 9 February 2014
- Tropical Cyclone Fletcher, commencing 2 February 2014
- Far North Queensland Peninsula Flooding (27-31 January 2014)
- Tropical Cyclone Dylan, 31 January 2014
- North Stradbroke Island Fires, commencing 29 December 2013.

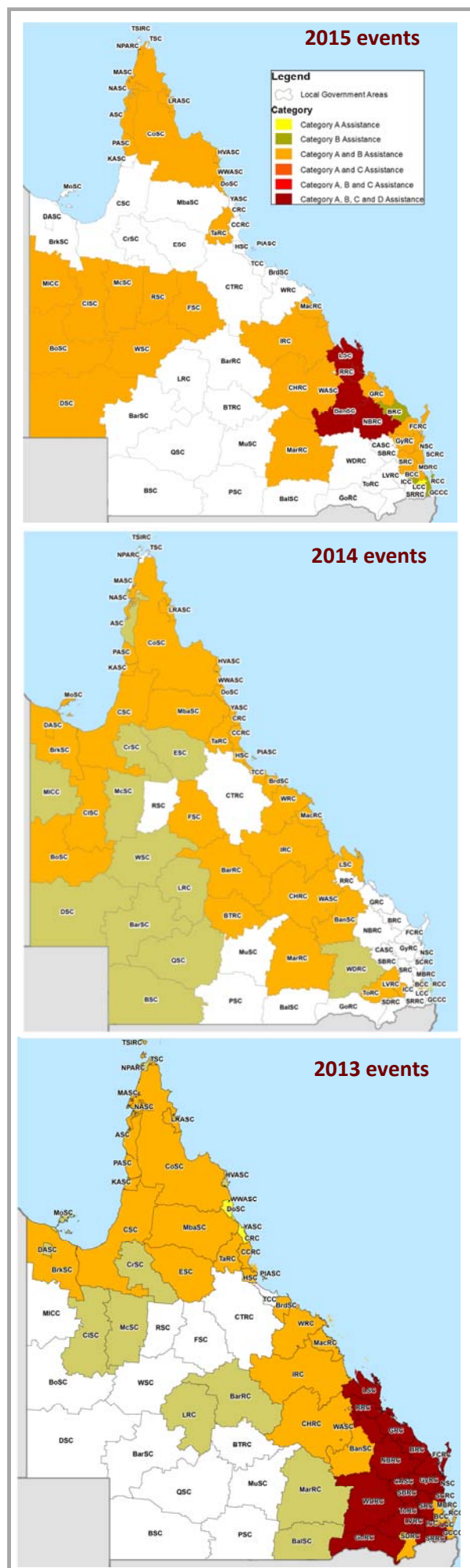
2013 events

(Delivery of works complete, with final acquittal due by March 2016)

- South West Queensland Wildfires, 21 December 2012
- Far Northern Queensland Bushfires, late October - December 2012
- Tropical Cyclone Oswald and Associated Rainfall & Flooding, 21-29 January 2013
- Longreach Flood, 18 February 2013
- Central & Southern Queensland Low, 25 February - 5 March 2013.

1. The NDRRA Determination imposes a time limit of two financial years after a disaster to deliver reconstruction works (delivery phase) a further nine months after the end of the financial year in which the works were completed to acquit the works (acquittal phase). Acquittal of the works occurs through the lodgement of an annual claim to the Commonwealth and is required to secure reimbursement of the Commonwealth's share of eligible expenditure.

2. In addition, Somerset Regional Council has been activated for 2016 events.



2.3 Additional assistance measures

The State Government in conjunction with the Commonwealth have activated a range of jointly-funded Category C, Category D and other relief measures to alleviate distress due to the impact of the 2015, 2014, 2013 and 2011 events, summarised as follows:

2015 events (Tropical Cyclone Marcia)

- **Betterment fund - \$20 million** - available for the restoration or replacement of non-State owned assets to a more disaster resilient standard than their pre-disaster standard. The intent of betterment is to increase the resilience of communities to natural disasters, while at the same time reducing future expenditure on asset restoration, reducing incidents, injuries and fatalities and improving asset utility during and after disaster events.
- **Clean-up and restoration of national parks, beaches and recreational assets - \$6 million** - funding to clean-up and repair damaged community infrastructure such as picnic areas, walking tracks and associated amenities.
- **Green waste clean-up - \$1 million** - assist LGAs in the most heavily impacted areas of Rockhampton, Livingstone, Banana and North Burnett with the costs of extensive green waste clean-up and removal activities from private properties and businesses.
- **Industry Recovery Officers - \$750,000** - Placement of Industry Recovery Officers to provide recovery information and support to primary producers in the worst affected areas.
- **Community Recovery Package (Category C) - \$5.1 million** - Funding to engage community development officers and personal support managers and case workers to aid the recovery of severely affected communities in the local government areas of Rockhampton, Livingstone, Banana, North Burnett and part of Gladstone.

2014 events

- **\$1.6 million** funding for the additional costs incurred by Cook Shire Council for disaster reconstruction work on the Peninsula Road Network.

2013 events

- **Betterment fund - \$80 million** - available for the restoration or replacement of essential public assets to a more disaster resilient standard than their pre-disaster standard. The status of the 2013 Events Betterment fund is set out in Section 3.6 of this report.
- **Community Recovery Package (Category C) - \$5 million** - Funding for community development officers in the hardest hit communities of Bundaberg and North Burnett, support for mental health services and a flexible fund that assists communities to implement engagement and development activities.
- **Clean Up and Recovery program - \$10 million** - Program to assist primary producers to clear debris and restore fencing in the worst affected areas; to maintain workers while income generating activities are reduced and to clear debris from watercourse that poses a hazard to downstream infrastructure and activities.
- **Industry Recovery Officers - \$1.5 million** - Placement of Industry Recovery Officers to assist business and primary producers recover from flooding.
- **Enhanced concessional loans and grants** - Loans of up to \$650,000 (with a grant component of up to \$50,000) are available to applicants that have suffered extreme damage such that the existing concessional loan and recovery grants under NDRRA category B and C are insufficient to support recovery.
- **Environmental Recovery program - \$10 million*** - Program to fund existing programs to conduct flood specific clean up and soil conservation work following the 2013 flooding.
- **Rural Financial Counselling Services - \$1.5 million*** - Provision of financial planning advice for rural businesses and primary producers to assist in the recovery of local economies following the disaster.
- **Other measures - \$11.9 million** to fund dredging works to restore Bundaberg Port to its pre-2013 flood clearance depths; and **\$900,000** to assist Bundaberg Regional Council meet the cost of recovery works for community parks and gardens.

2011 events

- **Queensland Local Council Package - \$315 million** - Funding to help local councils repair utilities and infrastructure, and support their efforts in recovering from the floods and Cyclone Yasi. The package comprises two components: \$265 million to fast-track the repair of damaged infrastructure, including the Strengthening Grantham project, Brisbane ferry terminals and Riverwalk; and \$50 million to contribute to regional and remote councils employing people to perform clean-up and repair work.
- **Cassowary Coast Support Package - \$15 million** - Funding to restore vital council infrastructure and restore natural vegetation and beach damage in the Cassowary Coast region. Specifically, the Support Package provides for the repair of Dunk Island Jetty, the repair of Clump Point Jetty and the restoration of Cardwell beach foreshore and its natural vegetation.
- **Exceptional Disaster Assistance Scheme** - Concessional interest loans of up to \$650,000, with grant component of up to \$50,000, to eligible businesses, primary producers and not-for-profit organisations that suffered extreme damage.

In addition, the State Government and Commonwealth have agreed to an extended Day Labour Trial for the 2011 to 2013 and 2015 events, which enables councils to deliver restoration works with their own workforce on condition that they provide evidence of savings in both time and cost.

* Non-NDRRA measures funded 50% by the State and 50% by the Commonwealth; Commonwealth share is being delivered directly through existing Commonwealth programs.

Section three:

Program Status



3.0 Program Status

3.1 Recent developments

A key milestone in the State's reconstruction effort was reached on 30 June 2015 with the deadline passing for councils and state agencies to complete works from Tropical Cyclone Oswald and other events from 2012-13; and the remaining works from the 2011 and 2012 event periods that had received extensions of time. Councils and state agencies have indicated that all relevant works were completed on time other than three betterment projects impacted by weather for which extension of time requests have been submitted to the Commonwealth.

During October, the Authority completed its regular review of damage estimates, which involved a complete review of the program of each LGA and State agency for works arising from disaster events managed by the Authority.

The Authority is currently focused on gathering and assessing completion documentation to close out works completed by 30 June 2015 for acquittal in the next claim due to the Commonwealth in early 2016. The Authority is also assisting with the damage assessments from the 2015 events and progression of the program of works from the 2014 and 2015 events through the damage assessment, submission preparation and approval and delivery phases. Since the last report, the first event of the 2016 disaster season has also occurred with severe storms impacting the Fernvale area in Somerset Regional Council in late October. Following the storm, the Authority has been liaising with Council to assist with recovery efforts and damage assessments.

3.2 Program status

Following completion of the September 2015 NDRRA estimates review, the Authority's total program has been revised to \$13.1 billion. Of this, \$12.3 billion of works from the 2010 to 2013 event periods has completed the delivery phase and \$10.8 billion of the program has completed the State's acquittal processes.

On this basis, the Authority is currently managing the assessment of submissions and delivery of works with an estimated value of \$833 million for the 2014 Events and 2015 Events (the **Delivery Program**) and an **Acquittal Program** worth \$2.4 billion, comprising the remaining works from the 2011 Events, 2012 Events, 2013 Events, 2014 Events and 2015 Events not yet acquitted.

Delivery Program status

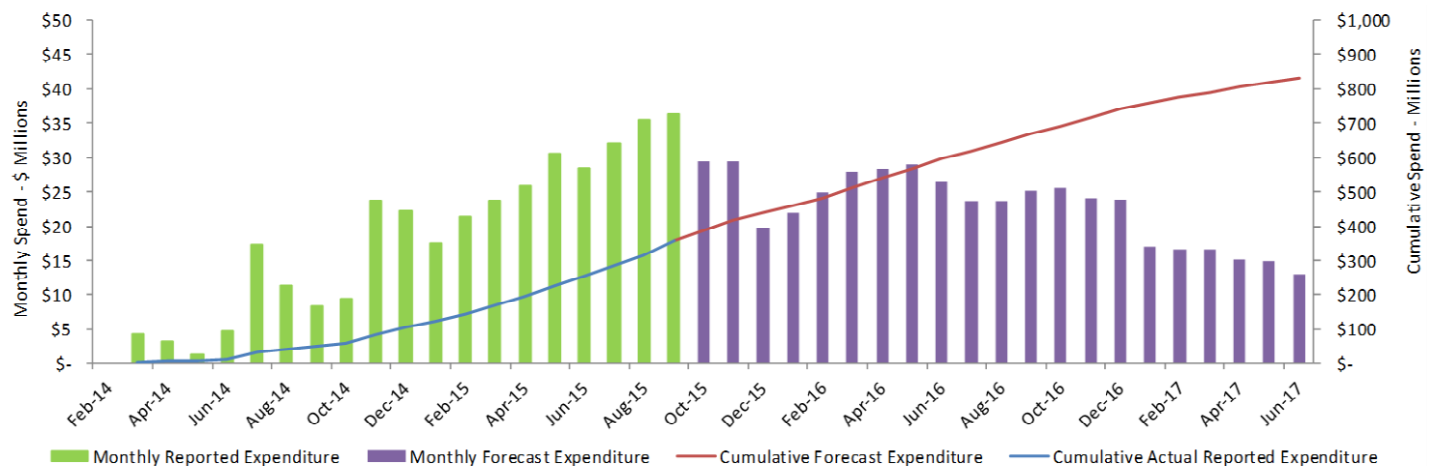
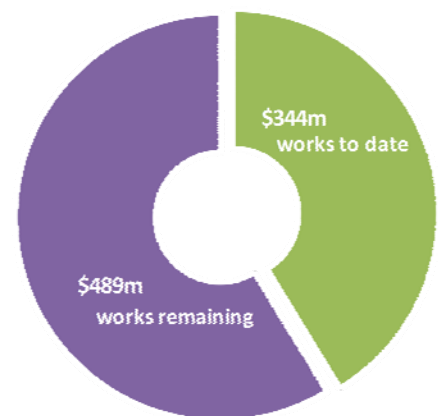
Since the last report, the Authority's program has progressed as follows:

- A cumulative value of \$903 million in submissions have been received in relation to the Delivery Program, an increase of \$80 million since last month
- A cumulative total of \$612 million has been approved, an increase of \$59 million since last month. Additional submissions worth \$106 million are with the Authority and under investigation or awaiting additional information
- A cumulative value of \$344 million of the Delivery Program has been reported to the Authority at 30 September 2015 as in progress or delivered.

The 2014 and 2015 event works are due for completion by 30 June 2016 and 30 June 2017 respectively.

The graph below shows the monthly reported expenditure and forecasted monthly costs to completion at 30 September 2015 on a combined basis for the Delivery Program (2014 and 2015 Events).

Delivery Program (2014 and 2015 Events) progress



(Source: The Authority, 31 October 2015)

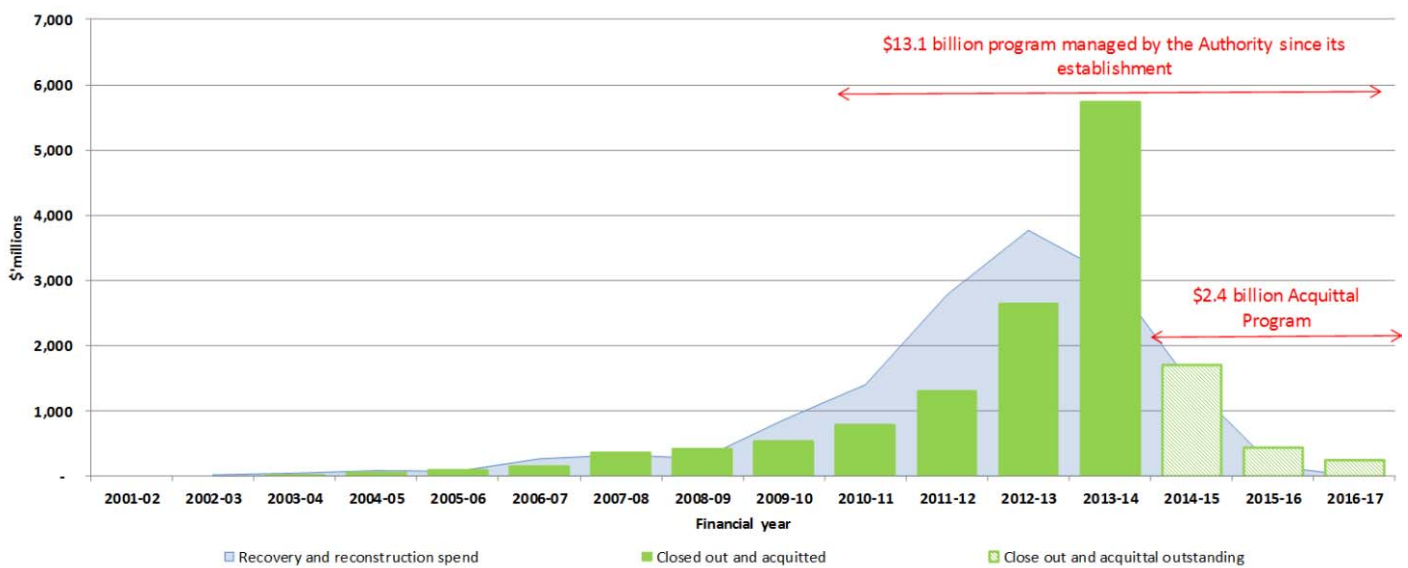
3.2 Program status (cont.)

Acquittal Program status

The 2014-15 Commonwealth Claim is provisionally estimated to require the close-out and acquittal of approximately \$1.7 billion of works completed up to 30 June 2015.

The close-out of the majority of remaining submissions for the 2014-15 Commonwealth Claim is currently underway. With works completed up to 30 June 2015, delivery agents collated their final claims for submission to the Authority through to September 2015 and the Authority is now processing these claims through to December 2015. Following audit review, the audited 2014-15 Commonwealth Claim will be due for acquittal to the Commonwealth in March 2016.

The following graph shows the historical and projected acquittal profile for Queensland as per Commonwealth Claims submitted for 2001-02 to 2013-14 and Commonwealth Claims preliminarily expected to be submitted for 2014-15 to 2016-17 in order to finalise acquittal of the \$2.4 billion remaining in the Acquittal Program. Beyond the 2014-15 Commonwealth Claim, the remaining \$0.7 billion of the Acquittal Program representing works completed after 30 June 2015 will be finalised in the 2015-16 and 2016-17 Commonwealth Claims to the Commonwealth by March 2017 and March 2018 respectively.



(Source: The Authority, 31 October 2015)

3.3 State-controlled roads and highways

DTMR set up its Transport Network Reconstruction Program (TNRP) to manage the recovery and reconstruction of Queensland's integrated transport system following the damage from natural disaster events in 2010, 2011, 2012 and 2013. The transport system includes state-controlled roads, ports, navigation aids and the rail network.

On completion of the final works in June 2015, DTMR's TNRP had spent more than \$6.4 billion on the recovery and reconstruction of 8,741km roads across the State arising from the disaster events of 2010 to 2013.

DTMR is managing the recovery and reconstruction works for the 2014 and 2015 event works that are currently in the delivery phase through its Program Delivery and Operations Branch.

Current status

- All Queensland Rail lines affected by disaster events have been recovered.
- All ports, navigation aids, jetties and other boating infrastructure damaged by natural disaster events have been recovered.
- Of the 214km of roads forecast to be reconstructed following damage from the 2014 events, 204km of works have been completed and the remaining 10km is under construction on active works contracts as at 30 September 2015. Works on the Peninsula Developmental Road in the Cape York region are expected to be finished in late 2015 to complete DTMR's program of 2014 event works.
- A total of 5579km of Queensland's road network was closed or had limited access as a result of the 2015 events. Following completion of the initial recovery phase of works, DTMR districts are currently scoping reconstruction works and preparing funding submissions to progress works.
- The majority of 2015 event works on State-controlled roads and highways are currently targeted by DTMR to be completed by 31 December 2016, six months before the funding deadline (weather permitting).

(Source: DTMR, 30 September 2015)

3.4 Additional assistance measures

2013 and 2015 Event Betterment Funds

The \$80 million 2013 Event Betterment fund and \$20 million 2015 Event Betterment fund are Category D relief measures available to those LGAs declared for NDRRA assistance as a result of the 2013 cyclone and flood events and for Tropical Cyclone Marcia in 2015 respectively. Betterment funding is available for the restoration or replacement of essential public assets to a more disaster resilient standard than existed pre-disaster.

Where a damaged asset is approved for betterment, the normal cost of restoring or replacing the asset to its pre-disaster standard is funded under Category B NDRRA and the incremental cost to 'better' the asset to a more disaster-resilient standard is funded by a capped allocation from the relevant Betterment fund and Council contributions.

Betterment funding is allocated on the basis of the estimated cost of the approved projects. Should the betterment component of a project be delivered for a cost below the capped allocation, then the savings will be returned to the Betterment fund for allocation to other eligible projects, where possible.

The current status of the 2013 and 2015 Event Betterment Funds is summarised as follows:

2013 Event Betterment Fund	2015 Event Betterment Fund
<ul style="list-style-type: none"> The 2013 Event Betterment Fund was allocated to 232 approved projects across 35 LGAs to improve the resilience of infrastructure to natural disasters following the 2013 events. Betterment projects include improved bridges, floodways, culverts, levees, water treatment plants and numerous roads across Queensland. The deadline for completion of works from the 2013 events, including betterment projects, passed on 30 June 2015 and councils have reported that 2013 Event Betterment projects were completed on time other than three projects impacted by excessive rainfall in 2014 and 2015. Requests for extension of time for delivery of the impacted projects have been submitted to the Commonwealth and remain under consideration. Completion of the projects has been delayed pending the Commonwealth's response to the extension requests. 	<ul style="list-style-type: none"> Expressions of Interest (EOI) for potential projects for consideration for 2015 Event Betterment funding have been sought with initial responses requested by 31 August 2015. EOIs have been received for 190 projects across eight LGAs eligible for 2015 Event Betterment funding. The proposed projects principally comprise works to increase the resilience of damaged roads, culverts and floodways. Projects are being progressively prioritised to allocate the available pool of funding. Of these, submissions for 120 projects have been received by the Authority to 31 October 2015 and are currently under assessment. Delivery of 2015 betterment works will be required by 30 June 2017 in accordance with NDRRA requirements.

Other 2015 Event special funding packages

The status of other Category C and D special funding packages approved in relation to Tropical Cyclone Marcia is summarised as follows:

Package	Purpose	Status
Clean-up and restoration of national parks, beaches and recreational assets (\$6 million)	<ul style="list-style-type: none"> To clean-up and repair community infrastructure such as picnic areas, walking tracks and associated amenities damaged by Tropical Cyclone Marcia 	<ul style="list-style-type: none"> The Authority received EOIs from six applicants worth more than \$16 million The Authority has reviewed and identified EOIs that appear consistent with the intent of the package and since received one submission for assessment.
Green waste clean-up (\$1 million)	<ul style="list-style-type: none"> To assist with the costs of green waste clean-up and removal activities from private properties and businesses 	<ul style="list-style-type: none"> The Authority has written to the four LGAs that are eligible for funding allocations (Rockhampton, Livingstone, Banana and North Burnett) seeking EOIs Initial responses for funding allocations have been received and the Authority is working with relevant councils to finalise applications.
Industry Recovery Officers (\$750,000)	<ul style="list-style-type: none"> For placement of industry recovery officers (IRO) to provide recovery information and support to primary producers in the worst affected areas 	<ul style="list-style-type: none"> Package is being managed by Queensland Department of Agriculture and Fisheries (DAF) DAF has appointed the Queensland Farmers Federation (QFF) to manage the IRO program, with IRO officers located with Growcom, Queensland Dairyfarmers Organisation, AgForce and the Nursery and Gardening Industry Queensland IROs commenced work in November, and are working directly with affected primary producers to better manage business risks associated with climate variability.
Community Recovery Package (\$5.1 million Category C)	<ul style="list-style-type: none"> To engage community development officers and personal support managers and case workers to aid the recovery of severely affected communities in Rockhampton, Livingstone, Banana, North Burnett and part of Gladstone LGAs. 	<ul style="list-style-type: none"> Package is being managed by Queensland Department of Communities, Child Safety and Disability Services (DCCSDS) A range of councils and other agencies have been appointed to deliver the Community Development and Personal Support & General Counselling programs across each of the five affected communities.

(Source: The Authority, DCCSDS and DAF; 31 October 2015)

3.5 Program spotlights

Category D On-farm Productivity and Riparian Recovery Program Burnett Mary Regional Group's success following Tropical Cyclone Oswald

Tropical Cyclone Oswald and its associated flooding in January 2013 left a trail of destruction across the Wide Bay Burnett region. The floods caused significant distress in the community and damage to the environment and infrastructure.

Record breaking flood levels were experienced in the Burnett River and Baffle Creek catchments as well as major flooding in the Mary River catchments causing extensive damage to rivers, floodplains and associated areas and the impacts were devastating to the region's natural assets and agricultural industries.

In response, the Commonwealth Government agreed to a \$15 million NDRRA Category D exceptional circumstances package for the On-farm Productivity and Riparian Recovery Program. The program aimed to assist primary producers in the region to get back into productivity and address environmental impacts following the flooding.

The Burnett Mary Regional Group (BMRG) was allocated \$8 million to develop flood recovery programs in the region.

BMRG Chief Executive Officer Penny Hall said five programs were implemented across the Bundaberg and North Burnett priority areas.

"The five flood recovery programs supported weed management, flood debris clean up, floodplain stabilisation and management, riparian stabilisation and management as well as land productivity," Ms Hall said. "The funding was vital and helped many farmers in the region to get back on track when they were really struggling so the program was an overall success and we are proud of our achievements."

"Thanks to the program, 40,000 hectares of weeds have been managed and controlled across the North Burnett and Bundaberg regions. More than 200 hectares of riparian areas were stabilised throughout the Burnett and Kolan rivers and in the Mary River catchment. Floodplain plans were developed for Three Moon Creek in the North Burnett and Bye Floodplain in South Burnett," she said.

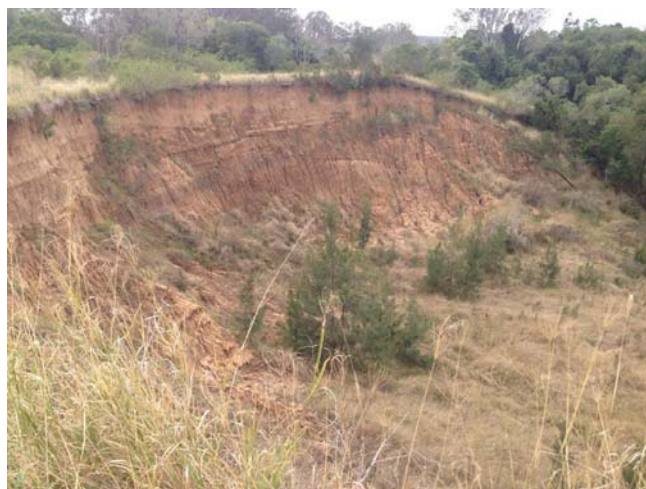
Ms Hall said the program also helped primary producers with their own challenges.

"Ninety-one primary producers got one-on-one assistance with soil health testing and recommendations and 88 landholders received immediate grants for soil health and land productivity. Twenty-one farmers received assistance with priority floodplain works and seven landholders had help removing flood debris from their land.

"This program has made a significant change to some struggling farmers' lives for the better so we are pleased we were able to assist and thank the Commonwealth and Queensland governments for the funding enable us to roll out this program.

"There are flow-on effects from this program as well, one positive outcome as a direct result of Oswald recovery work was having a skilled and experienced team in place who were able to respond quickly to the after effects of Cyclone Marcia in February this year," she said.

The On-farm Productivity and Riparian Recovery Program was jointly funded by the Commonwealth and Queensland governments and was managed by the Department of Natural Resources and Mines.



Example of significant erosion damage along the Burnett River following flooding associated with Tropical Cyclone Oswald.



BGA Agriservices, one of the qualified agronomy organisations who undertook soil health testing for growers in the Bundaberg area as part of the Category D program.



An example of works undertaken as part of the program, showing groundcover on site following seeding and rainfall to substantially reduce surface erosion and stabilise the area.

3.5 Program spotlights (continued)

Cloncurry Shire Council Getting works completed ahead of the wet season

After being hit by natural disasters every year since 2008-09, Cloncurry Shire Council is becoming increasingly proficient at meeting the challenges of delivering its ongoing restoration programs.

Recent history has shown it has been an unfortunate constant for Cloncurry to be delivering overlapping NDRRA programs. However, out of adversity comes the positive that Council is developing significant project management capacity.

Thanks largely to Council's proactive approach in managing its program, and also in part to its good working relationship with the Authority, Cloncurry has successfully delivered its approximate \$4.2 million 2014 events program ahead of the upcoming 2015-16 wet season, which generally starts in December/January.

The North Queensland wet season has previously caused delays for many councils, including Cloncurry, in their attempts to rebuild from previous natural disasters. In many cases, reconstruction work has started but not been completed before being re-damaged all over again when the wet season strikes. It's a vicious cycle that Cloncurry faced as it attempted to deliver its 2012 and 2013 programs.

Cloncurry Shire Council Director of Works and Environmental Services Peter Fitchat said Council was determined to break the cycle and deliver works ahead of the wet season.

"We were hit by the Central and Western Queensland Flooding and Rainfall event in February 2014 and we made a conscious decision to push to deliver the reconstruction works in a shorter period of time," Mr Fitchat said. "The QRA also worked hard to facilitate approvals in a timely manner, which supported our goal of delivering works ahead of the pending wet season."

The damage was spread fairly evenly across the shire but some of the key works in Cloncurry itself were on Alice, Dutton, Palmer and Station streets. While outside of town other key projects included Chatsworth-Phosphate Road as well as repairing floodways on Melbourne-Selwyn Road and Corella Park Road.

"We were able to start the 2014 program in earnest in March this year and it was completed in October," said Mr Fitchat. "We can't control the weather up here but we can do our best to control the delivery of our restoration programs and with 2014 finished we can turn our attention to the 2015 program."

"The QRA offered its expert assistance in preparing our 2015 submissions, which is a big help to speed up the process. The 2015 program is estimated at approximately \$10 million, which is double our 2014 program but our goal will remain the same and that is complete the works ahead of the next wet season," he said.



One of Cloncurry Shire Council's 2014 event reconstruction sites at Gereta-Rocky Glen Road before (left) and after (right) works

3.5 Program spotlights (continued)

DTMR

Tropical Cyclone Marcia reconstruction program on track

DTMR's reconstruction program responding to damage caused by Severe Tropical Cyclone Marcia earlier this year is on track, in line with the State Government's recovery plan milestones and outcomes.

Tropical Cyclone Marcia was the most severe natural disaster event to affect Queensland in 2015, temporarily closing 968 kilometres of the state road network. The Category 5 cyclone crossed the coast on 20 February 2015 at Shoalwater Bay near Yeppoon, with estimated wind gusts of up to 205km/h. Impacts were felt further south, with heavy rain and flooding occurring in the Wide Bay/Burnett and South Coast districts, particularly around the Sunshine Coast and the Mary and Burnett Rivers.

DTMR districts responded quickly with \$11 million in emergent repairs (including clearing fallen vegetation and debris, immediate repairs to bridge abutment washouts, and critical pavement repairs) and providing detours where necessary.

Some of the most severe damage was experienced in Wide Bay/Burnett District, where Monto-Mount Perry Road was closed to all vehicles at Yarrol when the Burnett River Bridge was washed away. Thanks to an agreement between DTMR and North Burnett Regional Council, drivers were soon able to use Kerwee Road as an alternative route. This route remains open to traffic while options to replace the Burnett River Bridge are progressed. A replacement structure is expected to be completed by 30 June 2017, within the NDRRA funding timeframe.

Other Tropical Cyclone Marcia reconstruction works are expected to be completed one year earlier, by 30 June 2016.

Detailed damage assessments have been carried out and initial funding submissions completed to establish the scope of reconstruction works required and ensure eligibility of planned works.



DTMR is undertaking 2015 event works in line with its business as usual road reconstruction project lifecycle:

- A thorough investigation and analysis is undertaken to establish damage and necessary treatment – this can include road surface surveys and obtaining samples of road materials.
- Design of the proposed treatment is completed.
- A comprehensive funding submission process is used to validate the works are eligible for NDRRA funding.
- Districts compile the necessary documents and specifications to allow the works to proceed to tender.
- A tender period, usually a minimum of four to six weeks, allows contractors to establish the value of works.
- DTMR then evaluates tenders and makes a recommendation for award, followed by approval by the financial and procurement delegate.
- The contractor usually takes about four weeks to establish labour, plant and subcontractors to deliver works, then reconstruction works can begin.
- Milestones for each stage of the project are set and progress monitored and reported monthly.

Left: Burnett River Bridge – prior to (top) and following damage (bottom) caused by Tropical Cyclone Marcia in February 2015

Section four: Communications



4.0 Communications

The Authority is focused on building stakeholder confidence in the reconstruction by ensuring consistent and regular communication of public information.

4.1 Communicating progress

Media analysis

There has been a total of 177 media items in October 2015 (106 print – 60%, 19 TV – 10%, 52 radio – 30%), which reached a cumulative audience of 4.9 million people, with the focus this month being on ongoing recovery efforts from Tropical Cyclone Marcia and the recent storms in Chinchilla and Fernvale.

There were media mentions for regions recovering from natural disaster events, including articles in The Atherton Tablelander, Australian Financial Review, Cairns Post, Capricorn Coast Mirror, Central and North Burnett Times, Clifton Courier, The Courier-Mail, Fraser Coast Chronicle, Gladstone Observer, Gympie Times, Innisfail Advocate, North West Star, Rockhampton Morning Bulletin, Bundaberg News Mail, Pittsworth Sentinel, Port Douglas and Mossman Gazette, Queensland Times, South Burnett Times, Tablelands Advertiser, and the Townsville Bulletin; TV coverage on the ABC, Channel 10, Nine, WIN, and Seven networks throughout the State; and radio mentions on ABC Radio Queensland, 2GB Sydney, 2SM Sydney, 4TO Townsville, 4BC Brisbane, 4KZ Innisfail, 4RO Rockhampton, and River FM Ipswich.

Making news in late October were the severe storms to hit the towns of Chinchilla in Western Downs and Fernvale in Somerset, and the clean-up efforts in the aftermath. These events received coverage in The Queensland Times, on ABC radio and tv, as well as on Channels 7 and 9, Sea FM Sunshine Coast and 2SM Sydney.

Communications

There are a number of methods available to the public to communicate with the Authority.

The Authority's website provides information to the public and continues to be enhanced with ongoing updates, including the information about Betterment projects and current recovery efforts. There has been a large number of visits to the website since it was launched on 18 February 2011. At 31 October 2015, total website visits amounted to 479,651 – a 1 percent increase since last month (See Figure 4.1.1)

In October, the Authority received an additional 40 calls to its dedicated phone line and 300 additional pieces of written correspondence were received. (See Figure 4.1.2)

Fig. 4.1.1 Website traffic

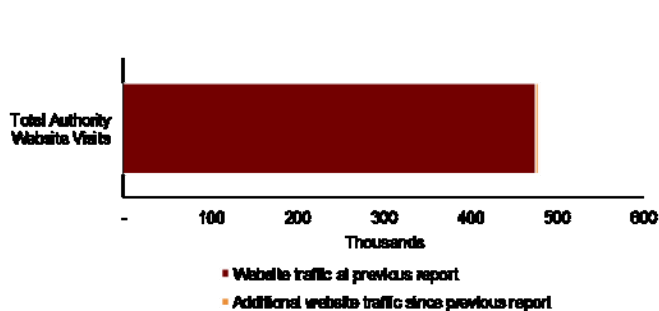
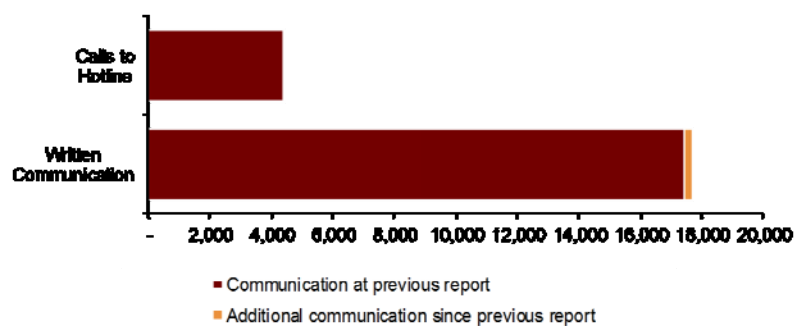


Fig. 4.1.2 Communications



(Source: the Authority at 31 October 2015)

4.2 Media reports



Take a walk through Rocky's new backyard

Kershaw Gardens master plan

Draft design for our 'big back yard' finally here

Morning Bulletin, 14 October 2015

Michelle Gately

michelle.gately@ipnews.com.au

A SPACE celebrating Australian flora, filled with shady picnic spots, community lawns and play areas for families. That's the vision for

In brief

NDRRA CASH BOON

More than \$1.7 million was poured into the economy during August as a result of National Disaster Relief and Recovery Arrangements activities in the Douglas Shire. More than \$1 million was spent in the Douglas Shire during August on accommodation, wages, fuel, material supply and plant hire, with a further \$710,000 spent in the regional area on wages, subcontractor and material supply. NDRRA construction is expected to be completed by December.

Port Douglas and Mossman Gazette, 8 October 2015

"Rocky's big back yard" following Cyclone Marcia's destruction in February. The park was extensively damaged during the natural disaster, with syringes, asbestos and other rubbish from its time as a landfill unearthed.

The site wasn't correctly capped when it closed as landfill in the 1980s, allowing some material to resurface during Marcia. Rockhampton Regional Council has previously estimated it would cost close to \$12 million to clean the

Council scoops 2015 Engineering Excellence Awards

Toowoomba Regional Council has been recognised for engineering excellence, winning this year's Institute of Public Works Engineering Australia (IPWEA Queensland) major awards.

Council's Outer Circulating Road and Garnet Lehmann Park Detention Basin project were recognised by IPWEA Queensland at the 2015 Excellence Awards Gala Dinner in Mackay on Tuesday 13 October.

The Outer Circulating Road (OCR) Project was named the 2015 Overall Winner and also won the award for best Design and Construction Project over \$10 million.

The Garnet Lehmann Park Detention Basin project received a Highly Commended award in the best Design and Construction Project between \$1 million to \$5 million category.

Principal Project Manager Angela Fry also won the Geoff Wilmoth Memorial Award for Best Paper at the IPWEA Queensland State Conference for her presentation on the OCR.

Council's Infrastructure Committee Chair Councillor Carol

Taylor and Council's Infrastructure Services Group General Manager Mike Brady accepted the awards on behalf of Council.

"I'm absolutely thrilled for Council and everyone on the project teams to be recognised for their outstanding efforts. The local community also deserves recognition for their support of these key projects," Cr Taylor said.

Mr Brady said Council beat some tough competition to walk away with the night's top awards.

"For Toowoomba to be recognised by our peers for outstanding engineering excellence is a testament to the commitment of both project teams to deliver the highest-quality infrastructure for the Toowoomba community," Mr Brady said.

"The awards are welcome recognition for those involved in the OCR project including Council's own staff, GHD, Probuild Civil, HIG, Advision and McCulloch Robertson," he said.

The OCR project in Toowoomba's CBD involved the design and construction of a four-lane extension of Victoria Street, a new Gowrie Creek bridge, doubling the Russell Street culvert structure capacity and upgrading West and East Creek channels.

IPWEA acknowledged the benefits the OCR project has deliv-

ered including improved traffic flow in and around the CBD, significant flood mitigation improvements, safety and economic benefits to the local community and a greatly improved aesthetic appeal of Toowoomba's historic rail precinct.

The Garnet Lehmann Park Detention Basin project involved redesigning the park to provide significant flood mitigation benefits for the city as well as significant landscaping in establishing a riparian zone to improve biodiversity.

Cr Taylor said the recognition of the project was a tribute to the work of Council's staff, including the Project Services, Construction and Maintenance Central and Parks and Recreation Services teams, AECOM, Advision and McCulloch Robertson.

"The detention basin project has provided Toowoomba with a community asset that is proving very popular for every day recreational use but will play a major role in mitigating future flood events," she said.

Cr Taylor also thanked her fellow Councillors, Member for Toowoomba South Dr John McVeigh for their ongoing support to both projects.

The \$45 million OCR was funded through the Queensland Government's Royalties for the Regions initiative and the Garnet Lehmann Park Detention Basin was funded through the Natural Disaster Relief and Recovery Arrangements (NDRRA), which includes a joint State and Commonwealth contribution of \$20 million with Council contributing \$5 million.



Toowoomba Regional Council was recognised for engineering excellence at last week's IPWEA Queensland awards. From left: Strategic Projects Officer Trevor Mitchell, Infrastructure Committee Chair Cr Carol Taylor, Infrastructure Services Group General Manager Mike Brady, Principal Project Manager Angela Fry, and GHD Toowoomba manager Dave Hogan. GHD designed the OCR project. Photo: TRC

Pittsworth Sentinel, 28 October 2015

Construction approved on restoration work

CONSTRUCTION on the Mareeba Wastewater Treatment Plant and road infrastructure works has been given the green light after Mareeba Shire Council approved more than \$2.5 million in tenders.

Mareeba Shire Mayor Tom Gilmore said council received grant funding approval from the Queensland Reconstruction Authority (QRA) to undertake restoration works to essential public assets, as a consequence of the 2014 Natural Disaster Relief and Recovery Arrangement (NDRRA)

declared event.

"One of these contracts is for the restoration of a package of sealed roads in Dimbulah," he said.

"The Mareeba Wastewater Treatment Plant has been the subject of discussion for more than 20 years. It has not met licenced requirements and is no longer large enough to serve the Mareeba population."

Councillor Gilmore said a new pressure main was an important process of the refurbishment of the wastewater

treatment plant to achieve environmental compliance and to ensure capacity to serve the community until 2030.

Council received funding towards new inlet works for the Mareeba Wastewater Treatment Plant under the Royalties for the Regions Program.

A tender for the rest of the plant has been called.

Tablelands Advertiser, 30 October 2015

Council's projects take centre stage

MAJOR regional infrastructure projects were top of the agenda at last week's 2015 Premier's Forum in Townsville.

Mayor Bill Lambie joined senior ministers and local government leaders from Banana to Cape York, to discuss economic development and funding opportunities for northern Queensland.

Cr Lambie commended the Premier for organising the forum to discuss ways to maximise local benefit from the Federal Government's recently released White Paper on Developing Northern Australia.

"Major water infrastructure including Nathan Dam and Rockwood and Eden Bann weirs were identified as Central Queensland's key regional priorities to put forward for funding consideration under the Federal Government's Northern Australia White Paper," Cr Ludwig said.

"Livingstone Shire Council will also be putting forward the upgrading and sealing of Stange Bay Road as a major regional funding priority, given its importance for the production and transport of export beef as well as its

key role as major access for the staging of national and international military training exercises.

"The Federal Government has committed \$3 billion in transport infrastructure to the Northern Australian economic zone and by building on our strong partnerships with state and neighbouring local governments areas, I am confident we can work together to ensure all regions receive their fair share."

"The forum also created an opportunity to brief the Premier, Deputy Premier and a number of senior

ministers and Director Generals on cyclone recovery efforts as well as the Yepoon and Emu Park Foreshore Revitalisation Projects.

"The other major update was in relation to the significant repair and rebuild of the Scenic Highway at Statue Bay.

"With the scope of works and cost estimates nearing completion, Council remains hopeful that a significant portion of the estimated \$18 - \$20million repair bill will be covered under the Natural Disaster Relief and Recovery Arrangements."

Work set for Noah Creek

NOAH Creek Bridge, on Cape Tribulation Road between Thornton Beach and Cape Tribulation, will be closed to all traffic for three hours on Friday, October 23, and again on Monday, October 26, due to road works.

The hours of closure will be from 10am to 1pm both days, Douglas Shire Council says. Repairs to the bridge are being jointly funded by the Commonwealth and Queensland State governments under the Natural Disaster Relief and Recovery Arrangements and will include kerb repair upstream and downstream, bridge deck preparation and re-asphalting.

There will be delays at the bridge for a week as from October 20 and people travelling during this time are advised to allow extra travel time. Traffic lights used during work hours will be operated by a traffic controller who will have line of sight of both lights and a remote control to allow

traffic to flow with a minimum delay time.

The bridge repairs have been left as late as possible in the programme of works so as to avoid the main tourist season when traffic is heaviest.

The \$20+ million program to repair 163 roads damaged in 2014 flood and cyclone events is about three quarters the way through, with completion anticipated by the end of November.

Douglas Shire Council said that to ensure the work gets out, electronic signs either side of Noah Creek will alert travellers to the upcoming delays and the planned closures. In addition, signs have been placed on the notice board at the ferry and on the ferry ticket booth; more than 100 businesses, tour operators and organisations have been emailed directly and Council's website has details on the NDRRA Activity Map, main Activity Map and there will be an alert under Road Conditions.

Port Douglas and Mossman Gazette, 8 October 2015

Residents pleased with gully work

Regular users of Mount Molar Road to access Gillam or Belview Roads are pleased with improvement works carried out at Sobbe's Gully, near the base of Mount Molar.

The creek crossing has been in need of upgrading for some time.

The state of the gully caused re-routing of one stage of the Year of Toowoomba a couple of years ago, despite the best efforts of council workmen on the morning of the event.

"Council has just completed works to improve the safety and flood immunity of the roadway at Sobbe Gully, Mount Molar between Clifton and Nobby," Toowoomba Regional Council Infrastructure Services Committee chair Cr Carol Taylor said.

She indicated that the project had been easier to carry out thanks to the cooperation of locals.

"Council is very appreciative of the access a property owner granted to construction crews that allowed them to clear a blocked section of the creek," Cr Taylor said.

"This work will ensure a better flow in the water-course and help prevent water and silt from sitting in the roadway.

Prevent repairs were completed on the



Clifton Courier, 28 October 2015

Capricorn Coast Mirror, 14 October 2015

Mareeba projects approved

NICK DALTON

TENDERS of more than \$2.5 million have been approved by Mareeba Shire Council for Dimbulah road works and to start on the refurbishment of the Mareeba Wastewater Treatment Plant.

Mayor Tom Gilmore said the council had received grant funding approval from the Queensland Reconstruction Authority to undertake resto-

ration works as a consequence of the 2014 Natural Disaster Relief and Recovery Arrangement-declared event.

"One of these contracts is for the restoration of a package of sealed roads in Dimbulah," he said.

"The Mareeba Wastewater Treatment Plant has been the subject of discussion over a period in excess of 20 years.

"It has not met licence requirements for many years

and is no longer large enough for the Mareeba population.

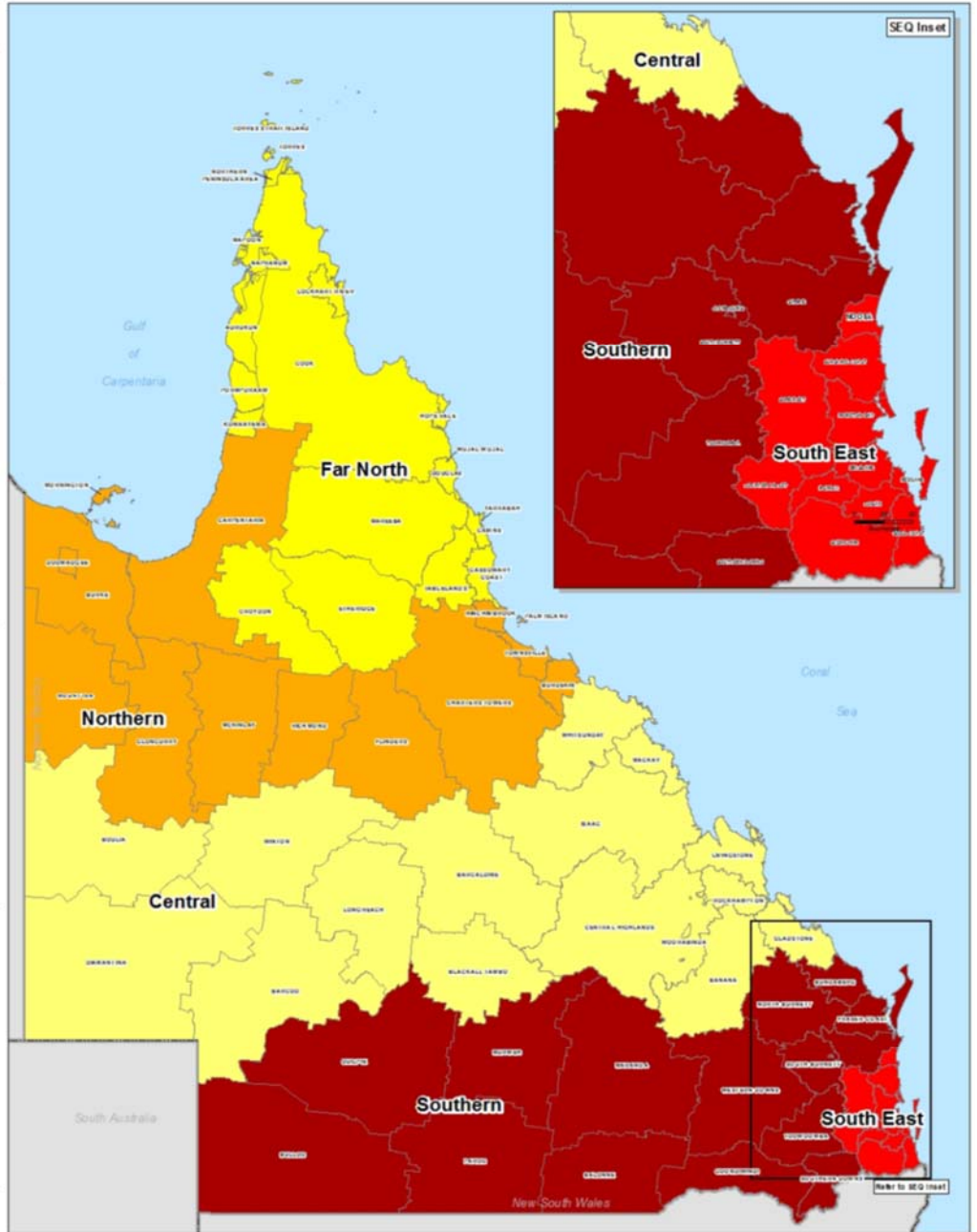
"The tenders let for the inlet works and for the new pressure main are the beginning of the important process of the refurbishment of the wastewater treatment plant to achieve environmental compliance and to ensure that there is sufficient capacity in the plant to serve this community until 2030."

Cairns Post, 12 October 2015

Appendices

Appendix A: Local Government Areas by Region

Region	Local Government Areas (LGA's)	
Far North Queensland (FNQ)	ASC	Aurukun Shire Council
	CRG	Cairns Regional Council
	CCRC	Cassowary Coast Regional Council
	CoSC	Cook Shire Council
	CfSC	Croydon Shire Council
	DSC	Douglas Shire Council
	ESC	Etheridge Shire Council
	HVASC	Hope Vale Aboriginal Shire Council
	KASC	Kowanyama Aboriginal Shire Council
	LRASC	Lockhart River Aboriginal Shire Council
	MASC	Mapoon Aboriginal Shire Council
	MbaSC	Mareeba Shire Council
	NASC	Napranum Aboriginal Shire Council
	NPARC	Northern Peninsula Area Regional Council
	PASC	Pormpuraaw Aboriginal Shire Council
	TRC	Tablelands Regional Council
	TSC	Torres Shire Council
	TSIRC	Torres Strait Island Regional Council
	WWASC	Wujal Wujal Aboriginal Shire Council
YASC	Yarrabah Aboriginal Shire Council	
North Queensland (NQ)	BrdSC	Burdekin Shire Council
	BrkSC	Burke Shire Council
	CSC	Carpentaria Shire Council
	CTRC	Charters Towers Regional Council
	CISC	Cloncurry Shire Council
	DASC	Doomadgee Aboriginal Shire Council
	FSC	Flinders Shire Council
	HSC	Hinchinbrook Shire Council
	McSC	McKinlay Shire Council
	MoSC	Mornington Shire Council
	MICC	Mount Isa City Council
	PIASC	Palm Island Aboriginal Shire Council
	RSC	Richmond Shire Council
	TCC	Townsville City Council
	Central Queensland (CQ)	BanSC
BarRC		Barcaldine Regional Council
BarSC		Barcoo Shire Council
BTRC		Blackall-Tambo Regional Council
BOSC		Boulia Shire Council
CHRC		Central Highlands Regional Council
DSC		Diamantina Shire Council
GSC		Gladstone Regional Council
IRC		Isaac Regional Council
LSC		Livingstone Shire Council
LRC		Longreach Regional Council
MacRC		Mackay Regional Council
RRC		Rockhampton Regional Council
WRC		Whitsunday Regional Council
WSC		Winton Shire Council
WASC	Woorabinda Aboriginal Shire Council	
Southern Queensland (SQ)	BaSC	Balonne Shire Council
	BSC	Bulloo Shire Council
	BRC	Bundaberg Regional Council
	CASC	Cherbourg Aboriginal Shire Council
	FCRC	Fraser Coast Regional Council
	GoRC	Goondiwindi Regional Council
	GRC	Gympie Regional Council
	MarRC	Maranoa Regional Council
	MuSC	Murweh Shire Council
	NBRC	North Burnett Regional Council
	PSC	Paroo Shire Council
	QSC	Quilpie Shire Council
	SBRC	South Burnett Regional Council
	SDRC	Southern Downs Regional Council
ToRC	Toowoomba Regional Council	
WDR	Western Downs Regional Council	
South East Queensland (SEQ)	BCC	Brisbane City Council
	GCCC	Gold Coast City Council
	ICC	Ipswich City Council
	LVRC	Lockyer Valley Regional Council
	LCC	Logan City Council
	MBRC	Moreton Bay Regional Council
	NSC	Noosa Shire Council
	RCC	Redland City Council
SRRC	Scenic Rim Regional Council	
SRC	Somerset Regional Council	
SCRC	Sunshine Coast Regional Council	



Disclaimer:
This map has been prepared by the Queensland Reconstruction Authority. The Queensland Reconstruction Authority does not warrant the accuracy of the information contained in this map. The Queensland Reconstruction Authority does not accept any liability for any loss or damage resulting from the use of or reliance on this map.

Queensland Reconstruction Authority

**Local Government Areas
and QldRA Reporting Regions**

Scale at A4: 1:6,700,000

Legend

- Far North Queensland
- North Queensland
- Central Queensland
- Southern Queensland
- South East Queensland
- Local Government Areas

As at 5/02/2014

