

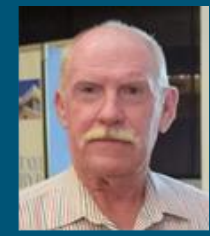
McKinlay Shire Council Local Monsoon Trough Recovery Plan

North & Far North Queensland Monsoon Trough, 25 January – 14 February 2019

Endorsed by: McKinlay Shire Council on 16 April 2019



Mayor
Belinda Murphy



CEO
Des Niesler

Recovery narrative

Council vision statement

A great place to live with a well connected, strong, healthy and friendly community, McKinlay Shire will continue to sustain and grow as a place that represents the best aspects of outback living. McKinlay Shire supports a growing population to meet the key thresholds for social, health, education and commercial services and also underpins a sustainable, diversified rural economy. The community welcomes new industries that contribute to its overall vision and sustainability.

Ongoing improvements to infrastructure, amenities and services will continue to improve the healthiness and quality of life for residents and make McKinlay Shire an increasingly attractive and connected place for residents, tourists and visitors. Through good governance and partnerships, we strive to achieve quadruple bottom line outcomes that maximise the social, cultural, environmental and economic benefits of all our future actions.

Council values

A well-managed shire

- A focus on Council's leadership and management of the shire and its assets.

A sustainable environment

- A focus on the shire's built and natural environments and supporting infrastructure.

A vibrant community

- A focus on the health, wellbeing and general quality of life for the community.

A strong economy

- A focus on economic development to create employment growth and opportunity.

Local Recovery Group

Chaired by: Des Neisler

Local Recovery Coordinator: Tenneil Cody

Lines of Recovery

Human and Social, Economic, Environment, Building, Roads and Transport.

Key stakeholders

Lead state government agencies, community groups, non-government organisations/non-government associations, local businesses and trader associations, service providers and other invested parties.

Recovery objectives

1. Essential services – power, water, waste, telecommunications in Nelia and homesteads – restored
2. Implementation of Carcass Disposal Plan for Deceased livestock and wildlife
3. Emergency funding (personal hardship etc.) – granted/approved
4. Impact assessments – to be completed and driven by Council
5. Key transport routes – priority restoration and improved resilience to the key transport routes for Primary producers and resource sector – completed surveys of primary producers
6. Disposal of deceased wildlife and livestock
7. Fencing requirements identified and graziers supported to utilise available assistance to restore fencing
8. Community support – mechanisms implemented including outreach and plan for long term support prepared
9. Road transport network – completed damage pickup, developed coordinated restoration and betterment planning for the extensive road transport network for state and local controlled roads
10. Full impact assessment for local mining industry completed
11. Establishment of response infrastructure to at risk communities
12. Empower local businesses to improve their resilience to disasters
13. Restore confidence in the tourism market
14. Flood resilience – develop and implement strategies for greater flood resilience – Cloncurry River
15. Regional collaboration plan completed with nearby affected councils

Damage and impacts

Damage and impacts

Human and Social

- Three households at Nelia have been damaged and experienced long term power outage
- No parks and public spaces unsafe/unavailable
- 3 home contents damaged or destroyed
- Community wellbeing: feeling of isolation, loss, anxiety and fear
- Financial hardship
- Extensive damage and losses experienced by the graziers in the shire, after many years of little rain, concern over the future for the industry

Economic

- Agriculture industry: extensive stock loss by graziers in the region, as well as damage to fencing, machinery and sheds
- Fodder drops were conducted on multiple properties throughout the event
- Extended disruptions to transport routes for product freight into and from Richmond, particularly the cattle producers facing long term delays in repairs to roads to allow heavy vehicle access
- Loss of local services and supplies, particularly food and fuel
- Loss of income/profits to small businesses – staff isolation and lack of stock due to road closures
- Small business – Council to encourage local business to complete an impact survey via the Queensland Government Business Queensland website

Environment

- Creek catchment erosion, particularly Eastern Creek with silt impact to surrounding environment
- Biosecurity concerns within the agriculture industry from carcasses
- Public health concerns, including mosquitos, water quality
- Contamination impact from product storage on derailed train at Nelia
- Growth of weeds and pest weeds (prickle bushes) throughout environment
- Kangaroo population impacted heavily
- Wild pigs roaming and feeding on dead carcasses

Building

- Power disconnected to the three homes at Nelia
- House at "Crowfels" property impacted severely by flood waters
- Wyaldra and Longford Properties impacted severely by flooding – both properties were evacuated
- Water and sewerage treatment plants were not flood effected, though were put under pressure in dealing with excessive water in the sewerage network
- Council's Wide Area Network (WAN) directly impacted, impeding response and business continuity
- McKinlay Shire Council Storage Depot at McKinlay was Damaged
- QCWA Hall at Nelia flooded
- Dump in Julia Creek flooded
- Saxby Round Up Complex flooded

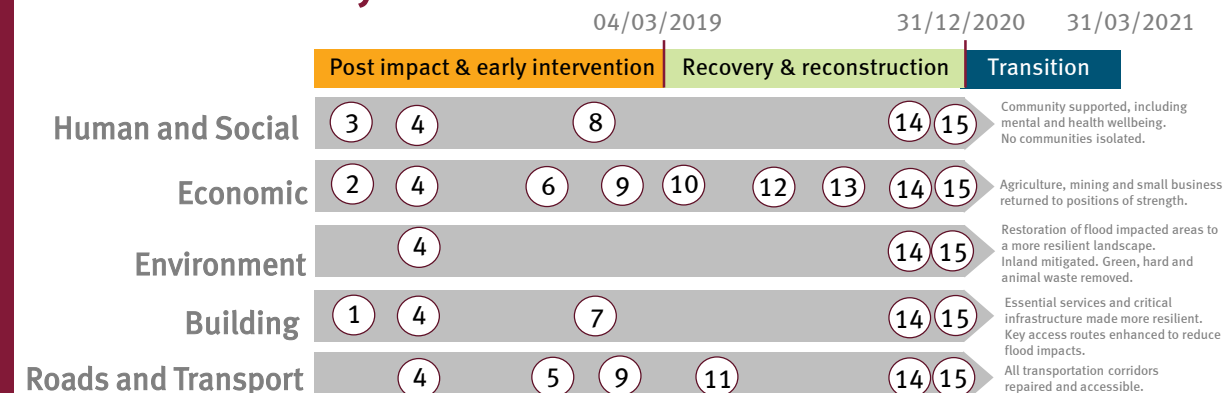
Roads and Transport

All townships, outlying areas and key transport routes were isolated for varying lengths of time due to flooding, bridge floodway damage including, but not limited to:

- Closure of the Flinders Highway between Julia Creek, Richmond, Cloncurry and Mt Isa.
- Kynuna and McKinlay Road sections flooded.

Recovery timeline

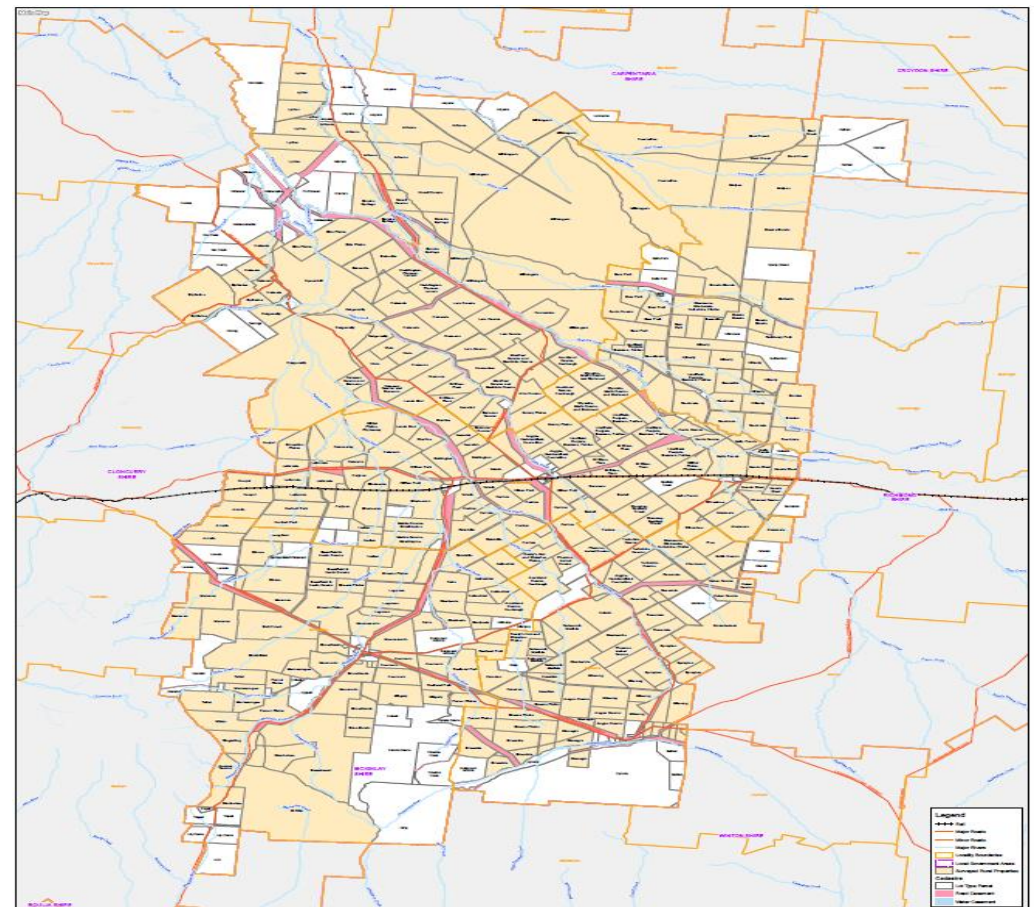
Lines of recovery



Recovery narrative

Recovery objectives

Damage – locations



Activations for Disaster Recovery Funding Assistance

For details of activations and assistance measures visit www.qra.qld.gov.au/activations

Grant Assistance Activations

Disaster Recovery Funding Arrangements (DRFA)														
Category	A	A/B	B	B	B	B			B			C/D	C	
LGA	PHAS	CDO	ESSR	REPA	Freight subsidies	Essential Working Capital Loans			Disaster Assistance Loans			Clean-up and Recovery Grants		
						PP	NFP	SB	PP	NFP	SB	PP	NFP	SB
North & Far North Queensland Monsoon Trough, 25 January - 14 February 2019														
McKinlay														
Activations Key:														
LGA - Local Government Area						PP - Primary Producers								
PHAS - Personal Hardship Assistance Scheme						NFP - Not-for-Profit organisations								
CDO - Counter Disaster Operations						SB - Small Business								
ESSR - Essential Services Safety & Reconnection						REPA - Reconstruction of Essential Public Assets								

Recovery tasks

- Opening of key roads used for transport.
- Implement the animal carcass disposal plan.
- Introduce a governance and reporting strategy for the recovery identifying key milestones and reporting requirements.
- Ensure that Council can continue with business as usual projects whilst in recovery.
- Support outreach activities for Primary Producers.
- Work with small businesses in the Shire and encourage owners to complete the impact survey so that scoping any support mechanisms required can be conducted.
- Support not-for-profit groups (sport and recreational) in the Shire.

Recovery reporting

Council Recovery Reporting Arrangements

The Local Recovery Coordinator will prepare weekly status updates for the Mayor, CEO and other key stakeholders of the Local Recovery Group.

The status update will advise stakeholders on the progress of the recovery in McKinlay Shire addressing the five pillars of recovery:

- Human and Social
- Economic
- Environment
- Building
- Roads and Transport